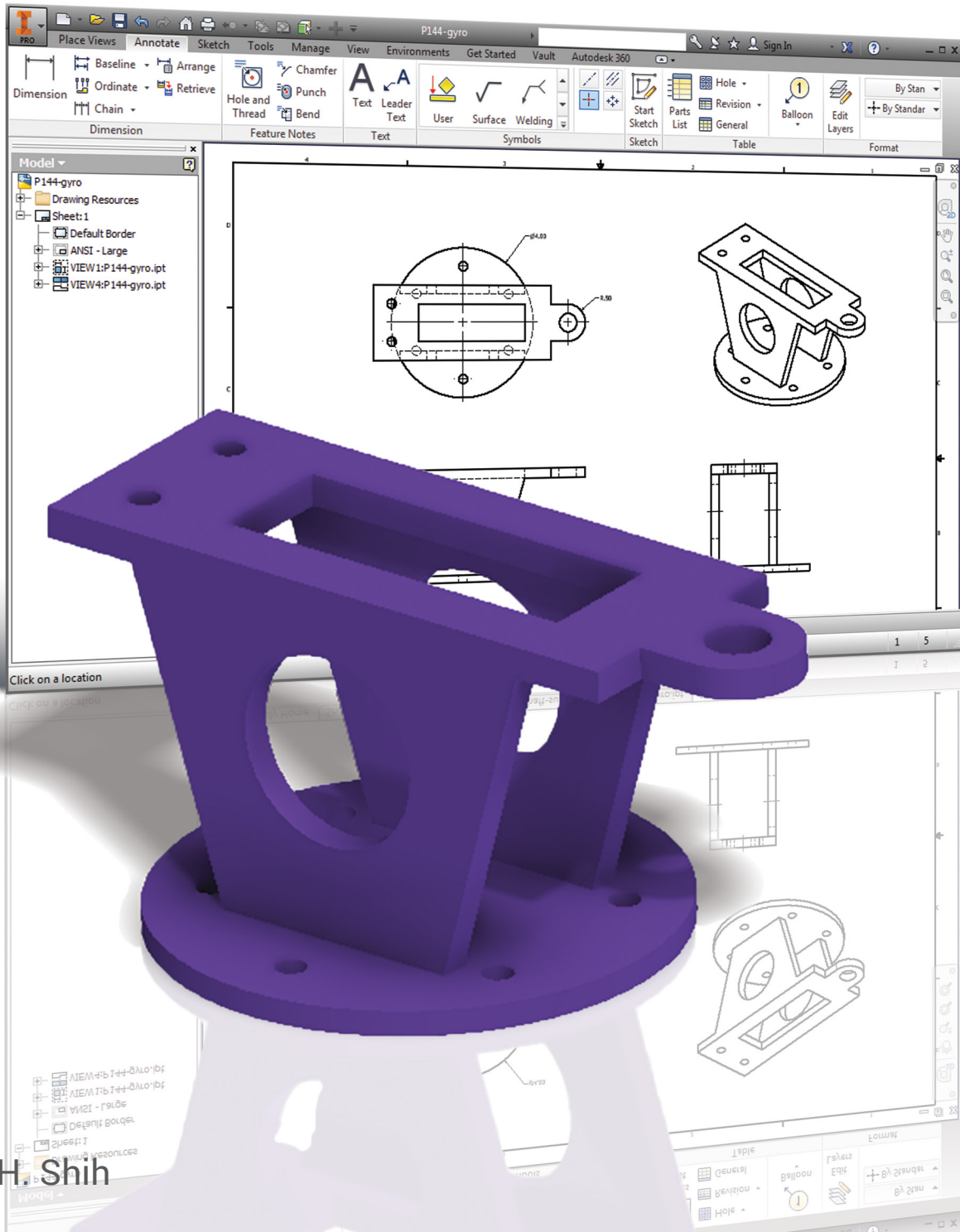


# Parametric Modeling with Autodesk® Inventor® 2016



Randy H. Shih

Visit the following websites to learn more about this book:



[amazon.com](https://www.amazon.com)

[Google books](https://books.google.com)

[BARNES & NOBLE](https://www.barnesandnoble.com)

# Table of Contents

<b>Preface</b>	i
<b>Acknowledgments</b>	ii
<b>Table of Contents</b>	iii
<b>Autodesk Inventor Certified User Examination Overview</b>	xiii
<b>Chapter 1</b>	
<b>Getting Started</b>	
Introduction	1-3
Development of Computer Geometric Modeling	1-3
Feature-Based Parametric Modeling	1-7
Getting Started with Autodesk Inventor	1-8
The Screen Layout and Getting Started Toolbar	1-9
The New File Dialog Box and Units Setup	1-10
Default Autodesk Inventor Screen Layout	1-11
Application Menu	1-12
Quick Access Toolbar	1-12
Ribbon Tabs and Tool Panels	1-12
Online Help Panel	1-12
Create Toolbar	1-13
Graphics Window	1-13
Message and Status Bar	1-13
Mouse Buttons	1-14
[Esc] - Canceling Commands	1-14
Autodesk Inventor Help System	1-15
Data Management using Inventor Project files	1-16
Setup of a New Inventor Project	1-17
The Content of an Inventor Project File	1-20
Leaving Autodesk Inventor	1-20
<b>Chapter 2</b>	
<b>Parametric Modeling Fundamentals</b>	
Introduction	2-3
The Adjuster Design	2-4
Starting Autodesk Inventor	2-4
The Default Autodesk Inventor Screen Layout	2-6
Sketch Plane – It is an XY Monitor, but an XYZ World	2-7
Creating Rough Sketches	2-9
Step 1: Creating a Rough Sketch	2-10
Graphics Cursors	2-10
Geometric Constraint Symbols	2-11
Step 2: Apply/Modify Constraints and Dimensions	2-12
Dynamic Viewing Functions – <i>Zoom</i> and <i>Pan</i>	2-15

Modifying the Dimensions of the Sketch	2-15
Step 3: Completing the Base Solid Feature	2-16
Isometric View	2-17
Dynamic Rotation of the 3-D block - Free Orbit	2-18
Dynamic Viewing - Quick Keys	2-20
Viewing Tools – Standard Toolbar	2-21
Display Modes	2-25
Orthographic vs. Perspective	2-25
Disable the Heads-Up Display Option	2-26
Step 4-1: Adding an Extruded Feature	2-27
Step 4-2: Adding a Cut Feature	2-32
Step 4-3: Adding another Cut Feature	2-35
Save the Model	2-38
Review Questions	2-39
Exercises	2-40

### Chapter 3

## Constructive Solid Geometry Concepts

Introduction	3-3
Binary Tree	3-4
The Locator Design	3-5
Modeling Strategy - CSG Binary Tree	3-6
Starting Autodesk Inventor	3-7
Base Feature	3-8
<i>GRID</i> intervals Setup	3-9
Model Dimensions Format	3-12
Modifying the Dimensions of the Sketch	3-12
Repositioning Dimensions	3-13
Using the Measure Tools	3-14
Completing the Base Solid Feature	3-17
Creating the Next Solid Feature	3-18
Creating a CUT Feature	3-22
Creating a PLACED FEATURE	3-25
Creating a Rectangular Cut Feature	3-27
Save the Model	3-29
Review Questions	3-30
Exercises	3-31

### Chapter 4

## Model History Tree

Introduction	4-3
The <i>Saddle Bracket</i> Design	4-4
Starting Autodesk Inventor	4-4
Modeling Strategy	4-5
The <i>Autodesk Inventor Browser</i>	4-6

Creating the Base Feature	4-6
Adding the Second Solid Feature	4-9
Creating a 2D Sketch	4-10
Renaming the Part Features	4-12
Adjusting the Width of the Base Feature	4-13
Adding a Placed Feature	4-14
Creating a Rectangular Cut Feature	4-16
History-Based Part Modifications	4-17
A Design Change	4-18
Assigning and Calculating the Associated Physical Properties	4-21
Review Questions	4-23
Exercises	4-24

## **Chapter 5**

### **Parametric Constraints Fundamentals**

CONSTRAINTS and RELATIONS	5-3
Create a Simple Triangular Plate Design	5-3
Fully Constrained Geometry	5-4
Starting Autodesk Inventor	5-4
Displaying Existing Constraints	5-5
Applying Geometric/Dimensional Constraints	5-7
Over-Constraining and Driven Dimensions	5-11
Deleting Existing Constraints	5-12
Using the Auto Dimension Command	5-13
Constraint and Sketch Settings	5-18
Parametric Relations	5-19
Dimensional Values and Dimensional Variables	5-21
Parametric Equations	5-22
Viewing the Established Parameters and Relations	5-24
Saving the Model File	5-25
Using the Measure Tools	5-26
Review Questions	5-30
Exercises	5-31

## **Chapter 6**

### **Geometric Construction Tools**

Introduction	6-3
The Gasket Design	6-3
Modeling Strategy	6-4
Starting Autodesk Inventor	6-5
Create a 2D Sketch	6-6
Edit the Sketch by Dragging the Sketched Entities	6-8
Add Additional Constraints	6-10
Use the <i>Trim</i> and <i>Extend</i> Commands	6-11
The <i>Auto Dimension</i> Command	6-13

Create Fillets and Completing the Sketch	6-15
Fully Constrained Geometry	6-16
Profile Sketch	6-18
Redefine the Sketch and Profile	6-19
Create an OFFSET Cut Feature	6-23
Review Questions	6-26
Exercises	6-27

## **Chapter 7**

### **Parent/Child Relationships and the BORN Technique**

Introduction	7-3
The BORN Technique	7-3
The U-Bracket Design	7-4
Sketch Plane Settings	7-5
Apply the BORN Technique	7-6
Create the 2-D Sketch of the Base Feature	7-8
Create the First Extrude Feature	7-11
The Implied Parent/Child Relationships	7-12
Create the Second Solid Feature	7-12
Create the First Cut Feature	7-16
The Second Cut Feature	7-17
Examine the Parent/Child Relationships	7-19
Modify a Parent Dimension	7-20
A Design Change	7-21
Feature Suppression	7-22
A Different Approach to the CENTER_DRILL Feature	7-23
Suppress the Rect_Cut Feature	7-25
Create a Circular Cut Feature	7-26
A Flexible Design Approach	7-28
View and Edit Material Properties	7-29
Review Questions	7-31
Exercises	7-32

## **Chapter 8**

### **Part Drawings and Associative Functionality**

Drawings from Parts and Associative Functionality	8-3
Starting Autodesk Inventor	8-4
Drawing Mode - 2D Paper Space	8-4
Drawing Sheet Format	8-6
Using the Pre-Defined Drawing Sheet Formats	8-8
Delete, Activate, and Edit Drawing Sheets	8-10
Add a Base View	8-11
Create Projected Views	8-12
Adjust the View Scale	8-13
Repositioning Views	8-14

Display Feature Dimensions	8-15
Repositioning and Hiding Feature Dimensions	8-17
Add Additional Dimensions – Reference Dimensions	8-19
Add Center Marks and Center Lines	8-20
Complete the Drawing Sheet	8-23
Associative Functionality – Modifying Feature Dimensions	8-24
3D Annotations in Isometric Views	8-27
Review Questions	8-35
Exercises	8-36

## **Chapter 9**

### **Datum Features and Auxiliary Views**

Work Features	9-3
Auxiliary Views in 2D Drawings	9-3
The <i>Rod-Guide</i> Design	9-3
Modeling Strategy	9-4
Starting Autodesk Inventor	9-5
Apply the BORN Technique	9-5
Creating the Base Feature	9-7
Create an Angled Work Plane	9-9
Create a 2D Sketch on the Work Plane	9-10
Use the Projected Geometry Option	9-10
Complete the Solid Feature	9-14
Create an Offset Work Plane	9-15
Create another Cut Feature Using the Work Plane	9-16
Start a New 2D Drawing	9-18
Add a Base View	9-19
Create an Auxiliary View	9-20
Display Feature Dimensions	9-22
Adjust the View Scale	9-24
Retrieving Dimensions in the Auxiliary View	9-25
Add Center Marks and Center Lines	9-28
Complete the Title Block with iProperties	9-31
Edit the Isometric view	9-33
Review Questions	9-34
Exercises	9-35

## **Chapter 10**

### **Symmetrical Features in Designs**

Introduction	10-3
A Revolved Design: PULLEY	10-3
Modeling Strategy - A Revolved Design	10-4
Starting Autodesk Inventor	10-5
Set up the Display of the Sketch Plane	10-5
Create the 2-D Sketch for the Base Feature	10-6

Create the Revolved Feature	10-10
Mirroring Features	10-11
Create a Pattern Leader Using Construction Geometry	10-13
Circular Pattern	10-18
Examine the Design Parameters	10-20
Drawing Mode – Defining New Border and Title Block	10-20
Create a Drawing Template	10-24
Create the Necessary Views	10-25
Retrieve Dimensions – Features Option	10-28
Associative Functionality – A Design Change	10-30
Add Center Lines to the Pattern Feature	10-32
Complete the Drawing	10-33
Review Questions	10-36
Exercises	10-37

## **Chapter 11**

### **Advanced 3D Construction Tools**

Introduction	11-3
A Thin-Walled Design: <i>Dryer Housing</i>	11-3
Modeling Strategy	11-4
Starting Autodesk Inventor	11-5
Set Up the Display of the Sketch Plane	11-5
Create the 2-D Sketch for the Base Feature	11-6
Create a Revolved Feature	11-9
Create Offset Work Planes	11-10
Start 2D Sketches on the Work Planes	11-11
Create a Lofted Feature	11-14
Create an Extruded Feature	11-16
Complete the Extruded Feature	11-18
Create 3D Rounds and Fillets	11-19
Create a Shell Feature	11-20
Create a Pattern Leader	11-21
Create a Rectangular Pattern	11-24
Create a Swept Feature	11-26
Define a 2D Sweep Path	11-26
Define the Sweep Section	11-28
Complete the Swept Feature	11-30
Review Questions	11-32
Exercises	11-33

## **Chapter 12**

### **Sheet Metal Designs**

Sheet Metal Processes	12-3
Sheet Metal Modeling	12-5
K-Factor	12-6



---

The Actuator Bracket Design	12-7
Starting Autodesk Inventor	12-8
Sheet Metal Defaults	12-9
Create the Base Face Feature of the Design	12-12
Using the Flange Command	12-15
Mirroring Features	12-19
Create a Cut Feature	12-20
Create a Fold Feature	12-22
Create the Associated Flat Pattern	12-25
Confirm the Flattened Length	12-26
Create a 2D Sheet Metal Drawing	12-27
Review Questions	12-34
Exercises	12-35

## **Chapter 13**

### **Assembly Modeling - Putting It All Together**

Introduction	13-3
Assembly Modeling Methodology	13-4
The Shaft Support Assembly	13-5
Additional <i>Parts</i>	13-5
(1) Collar	13-5
(2) Bearing	13-6
(3) Base-Plate	13-6
(4) Cap-Screw	13-7
Starting Autodesk Inventor	13-8
Placing the First Component	13-9
Placing the Second Component	13-10
Degrees of Freedom and Constraints	13-11
Assembly Constraints	13-12
Apply the First Assembly Constraint	13-15
Apply a Second Mate Assembly Constraint	13-16
Constrained Move	13-17
Apply a Flush Constraint	13-18
Placing the Third Component	13-20
Applying an Insert Constraint	13-21
Assemble the Cap-Screws	13-22
Exploded View of the Assembly	13-23
Editing the Components	13-25
Adaptive Design Approach	13-26
Delete and Re-apply Assembly Constraints	13-30
Set up a Drawing of the Assembly Model	13-32
Creating a Parts List	13-34
Edit the Parts List	13-35
Change the Material Type	13-37
Add the Balloon Callouts	13-39
Complete the Title Block Using the iProperties option	13-39

Bill of Materials	13-41
(a) BOM from Parts List	13-41
(b) BOM from Assembly Model	13-42
Review Questions	13-43
Exercises	13-44

## **Chapter 14**

### **Content Center and Basic Motion Analysis**

Introduction	14-3
The Crank-Slider Assembly	14-4
Create the Required Parts	14-4
Starting Autodesk Inventor	14-6
Placing the First Component	14-7
Placing the Second Component	14-8
Apply the Assembly Constraints	14-9
Apply a Second MATE Constraint	14-10
Constrained Move	14-11
Place the Third Component	14-11
Assemble the CS-Rod Part	14-14
Make a Copy of the PIN Part	14-15
Assemble the CS-Slider Part	14-16
Add an Angle Constraint to Fully Constrain the Assembly	14-21
Interference Analysis	14-23
Basic Motion Analysis	14-24
3D Grip Editing the CS-Slider Part	14-27
Review Questions	14-31
Exercises	14-32

## **Chapter 15**

### **2D Design Reuse, Collision and Contact**

Introduction	15-3
The Geneva CAM Assembly	15-4
Internet Download the Geneva-Wheel DWG File	15-4
Opening AutoCAD DWG File in Inventor	15-5
Use the Measuring Tools	15-6
Switch to the AutoCAD DWG Layout	15-8
2D Design Reuse	15-10
Complete the Imported Sketch	15-14
Create the First Solid Feature	15-16
Create a Mirrored Feature	15-17
Circular Pattern	15-18

Complete the Geneva Wheel Design	15-19
Additional Parts	15-20
Start a New Assembly	15-22
Placing the Second Component	15-23
The Assembly Joint Command	15-24
Create a Joint Connection	15-25
Constrained Move	15-26
Placing a Copy of the Geneva-Driver Part	15-26
Create a Second Joint Connection	15-27
Assemble the Geneva-Pin Part	15-28
Repositioning the Pieces	15-30
Animation with Drive Tool	15-31
Use the Inventor Contact Solver	15-33
Constrained Move with Contact Solver	15-35
Review Questions	15-36
Exercises	15-37

## Chapter 16

### Introduction to Stress Analysis

Introduction	16-2
Problem Statement	16-4
Preliminary Analysis	16-4
• Maximum Normal Stress	16-4
• Maximum Displacement	16-5
Finite Element Analysis Procedure	16-6
Create the <i>Autodesk Inventor</i> Part	16-7
Create the 2D Sketch for the Plate	16-7
Assigning the Material Properties	16-10
Switch to the <i>Stress Analysis</i> Module	16-11
Create an FEA Simulation	16-12
Apply Constraints and Loads	16-14
Create a Mesh and Run the Solver	16-16
Refinement of the FEA Mesh – Global Element Size	16-18
Refinement of the FEA Mesh – Local Element Size	16-20
Comparison of Results	16-23
Create an HTML Report	16-24
Geometric Considerations of Finite Elements	16-25
Conclusion	16-26
Summary of Modeling Considerations	16-26
Review Questions	16-27
Exercises	16-28

## Appendix

## Index