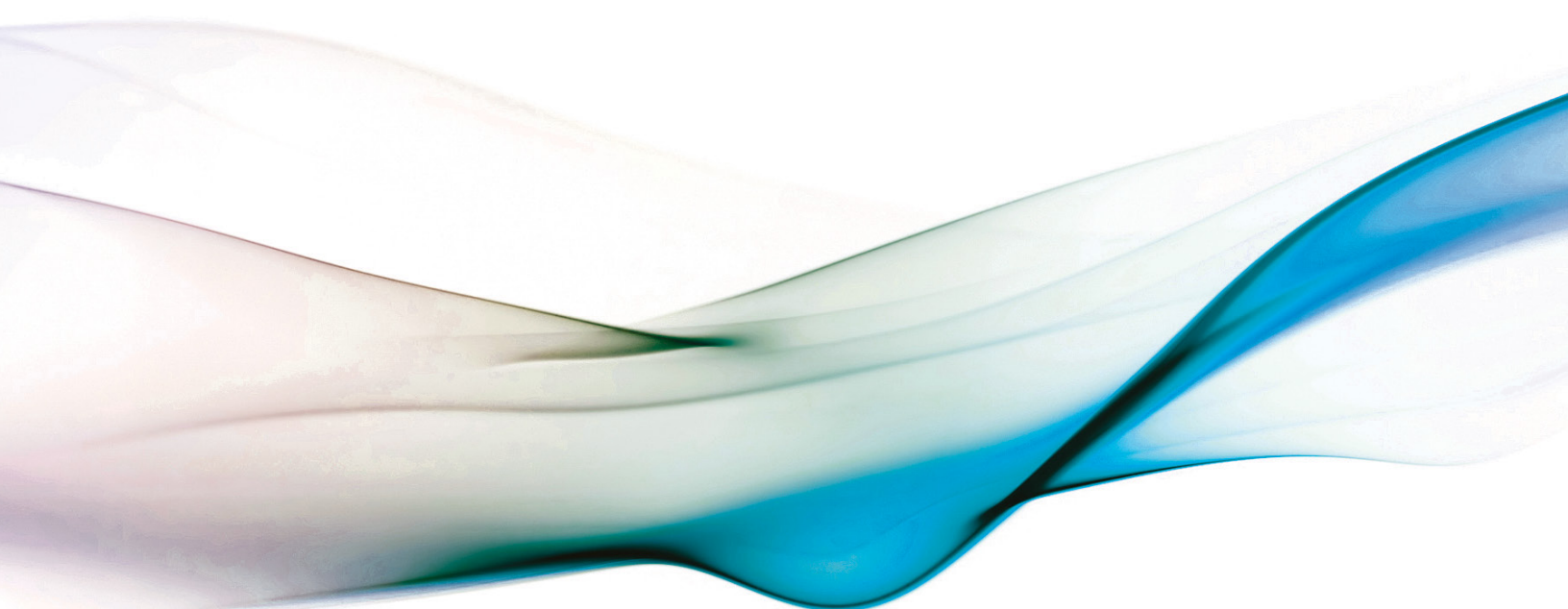


# An Introduction to **SolidWorks® Flow Simulation 2014**



John E. Matsson, Ph.D.



Visit the following websites to learn more about this book:



[amazon.com](https://www.amazon.com)

[Google books](https://books.google.com)

[BARNES & NOBLE](https://www.barnesandnoble.com)

## Table of Contents

<b>Chapter 1: Introduction</b> .....	<b>1-1-</b>
SolidWorks Flow Simulation Introduction .....	1-1-
Setting Up a SolidWorks Flow Simulation Project .....	1-2-
Meshing in SolidWorks Flow Simulation.....	1-2-
Calculation Control Options .....	1-4-
Inserting Boundary Conditions .....	1-4-
Choosing Goals .....	1-5-
Viewing Results .....	1-7-
Limitations of SolidWorks Flow Simulation .....	1-7-
References.....	1-7-
<b>Chapter 2: Flat Plate Boundary Layer</b> .....	<b>2-1-</b>
Objectives .....	2-1-
Problem Description.....	2-1-
Creating the SolidWorks Part .....	2-2-
Setting Up the Flow Simulation Project .....	2-8-
Selecting Boundary Conditions.....	2-10-
Inserting Global Goals.....	2-14-
Running the Calculations.....	2-16-
Using Cut Plots to Visualize the Flow Field.....	2-17-
Using XY Plots with Templates.....	2-18-
Comparison of Flow Simulation Results with Theory and Empirical Data .....	2-20-
Cloning of the Project.....	2-27-
References .....	2-35-
Exercises .....	2-35-

<b>Chapter 3: Analysis of the Flow past a Sphere and a Cylinder</b> .....	<b>3-1-</b>
Objectives .....	3-1-
Problem Description .....	3-1-
Creating the SolidWorks Part for the Sphere.....	3-1-
Setting Up the Flow Simulation Project for the Sphere.....	3-9-
Inserting Global Goal for Calculations .....	3-12-
Running the Calculations .....	3-13-
Using Cut Plots .....	3-15-
Inserting Surface Parameters .....	3-16-
Theory .....	3-17-
Cloning of the Project .....	3-17-
Time-Dependent Calculations .....	3-18-
Creating the SolidWorks Part for the Cylinder .....	3-20-
Setting Up the Flow Simulation Project for the Cylinder.....	3-21-
Inserting Global Goals for Calculations and selecting 2D Flow .....	3-22-
Tabular Saving .....	3-23-
Running Calculations for the Cylinder .....	3-24-
Using Excel for Frequency Analysis .....	3-25-
Inserting XY Plots .....	3-25-
Strouhal number .....	3-27-
Inserting Cut Plots.....	3-27-
Animating the Cut Plots.....	3-30-
References.....	3-31-
Exercises .....	3-31-
<b>Chapter 4: Analysis of the Flow past an Airfoil</b> .....	<b>4-1-</b>
Objectives .....	4-1-

Table of Contents

---

Problem Description ..... 4-1-

Creating the SolidWorks Part ..... 4-1-

Setting Up the Flow Simulation Project ..... 4-5-

Inserting Global Goals for Calculations ..... 4-8-

Running the Calculations ..... 4-10-

Using Cut Plots ..... 4-11-

Theory ..... 4-12-

Creating a Custom Visualization Parameter ..... 4-13-

Inserting Equation Goal for Calculations ..... 4-16-

Cloning of the Project ..... 4-17-

Creating a Batch Run ..... 4-18-

References..... 4-19-

Exercises ..... 4-20-

**Chapter 5: Rayleigh-Bénard Convection and Taylor-Couette Flow ..... 5-1-**

Objectives ..... 5-1-

Problem Description..... 5-1-

Creating the SolidWorks Part for Rayleigh-Bénard Convection ..... 5-2-

Setting up the Flow Simulation Project for Rayleigh-Bénard Convection ..... 5-4-

Creating Lids..... 5-6-

Inserting Boundary Conditions for Rayleigh-Bénard Convection ..... 5-7-

Setting up 2D Flow..... 5-9-

Inserting Global Goal for Rayleigh-Bénard Convection ..... 5-10-

Running the Calculations..... 5-10-

Inserting Cut Plots..... 5-11-

Comparison with Neutral Stability Theory ..... 5-14-

Creating the SolidWorks Part for Taylor-Couette Flow ..... 5-15-

Table of Contents

---

Setting up the Flow Simulation Project for Taylor-Couette Flow ..... 5-18-

Inserting Boundary Conditions for Taylor-Couette Cell ..... 5-20-

Inserting Global Goal and Running the Calculations for Taylor-Couette Flow ..... 5-21-

Inserting Surface Plots ..... 5-21-

Comparison with Neutral Stability Theory ..... 5-25-

References ..... 5-26-

Exercises ..... 5-26-

**Chapter 6: Pipe Flow ..... 6-1-**

Objectives ..... 6-1-

Problem Description ..... 6-1-

Creating the SolidWorks Part ..... 6-1-

Setting up the Flow Simulation Project ..... 6-5-

Creating Lids for the Pipe ..... 6-8-

Modifying the Computational Domain and Mesh ..... 6-9-

Inserting Boundary Conditions ..... 6-11-

Inserting a Global Goal ..... 6-14-

Running the Calculations for Laminar Pipe Flow ..... 6-14-

Inserting Cut Plots ..... 6-15-

Inserting XY Plots for Laminar Pipe Flow using Templates ..... 6-16-

Theory for Laminar Pipe Flow ..... 6-18-

Running Calculations for Turbulent Pipe Flow ..... 6-20-

Theory for Turbulent Pipe Flow ..... 6-20-

Inserting XY Plots for Turbulent Pipe Flow using Templates ..... 6-21-

Reference ..... 6-25-

Exercises ..... 6-25-

<b>Chapter 7: Flow across a Tube Bank</b> .....	<b>7-1-</b>
Objectives .....	7-1-
Problem Description .....	7-1-
Creating the SolidWorks Part .....	7-2-
Setting up the Flow Simulation Project .....	7-4-
Modifying the Computational Domain and Mesh .....	7-6-
Inserting Boundary Conditions .....	7-7-
Inserting Global Goals .....	7-8-
Running the Calculations for Tube Bank Flow .....	7-8-
Inserting Cut Plots .....	7-9-
Creating Sketch for XY Plots .....	7-11-
Theory and Empirical Data .....	7-13-
Reference .....	7-16-
Exercises .....	7-16-
<b>Chapter 8: Heat Exchanger</b> .....	<b>8-1-</b>
Objectives .....	8-1-
Problem Description .....	8-1-
Creating the SolidWorks Part .....	8-2-
Setting up the Flow Simulation Project .....	8-10-
Creating Lids .....	8-12-
Inserting Boundary Conditions .....	8-14-
Inserting Goals .....	8-16-
Running the Calculations for Heat Exchanger .....	8-17-
Inserting Surface Parameters .....	8-18-
Inserting Cut Plots .....	8-18-

Table of Contents

---

Effectiveness – NTU Method ..... 8-20-

Reference ..... 8-22-

Exercises ..... 8-23-

**Chapter 9: Ball Valve ..... 9-1-**

Objectives ..... 9-1-

Problem Description ..... 9-1-

Creating the Ball Valve ..... 9-2-

Creating the Ball Valve Housing and Pipe Sections ..... 9-7-

Creating the Ball Valve and Pipe Assembly ..... 9-11-

Setting up the Flow Simulation Project for the Ball Valve..... 9-14-

Creating Lids and Setting the Minimum Gap Size and Number of Cells ..... 9-15-

Inserting Boundary Conditions ..... 9-16-

Inserting Goals ..... 9-18-

Running the Calculations for Ball Valve ..... 9-18-

Inserting Cut Plots ..... 9-19-

Determining Hydraulic Resistance..... 9-20-

Reference ..... 9-22-

Exercises ..... 9-23-

**Chapter 10: Orifice Plate and Flow Nozzle ..... 10-1-**

Objectives ..... 10-1-

Problem Description ..... 10-1-

Creating the Orifice Plate in a Pipe ..... 10-2-

Setting up the Flow Simulation Project for the Orifice Plate..... 10-6-

Inserting Boundary Conditions ..... 10-7-

Inserting Goals ..... 10-9-



Table of Contents

---

Running the Calculations for Orifice Plate ..... 10-9-

Inserting Cut Plots ..... 10-11-

Determining Discharge Coefficient for Orifice Plate ..... 10-12-

Inserting XY Plots ..... 10-14-

Creating Sketch for XY Plots..... 10-16-

Flow Trajectories..... 10-17-

Running the Calculations for Long Radius Nozzle ..... 10-18-

Determining Discharge Coefficient for Long Radius Nozzle ..... 10-19-

Reference ..... 10-20-

Exercises ..... 10-21-

**Chapter 11: Thermal Boundary Layer ..... 11-1-**

Objectives ..... 11-1-

Problem Description..... 11-1-

Setting up the Flow Simulation Project ..... 11-1-

Inserting Boundary Conditions ..... 11-4-

Inserting Goals ..... 11-7-

Running the Calculations for Low Reynolds Number..... 11-7-

Inserting Cut Plots ..... 11-8-

Plotting Temperature Profiles using Template..... 11-9-

Theory..... 11-11-

Plotting Non-dimensional Temperature Profiles using Template ..... 11-11-

Plotting Local Nusselt Number using Template ..... 11-13-

Running the Calculations for High Reynolds Number ..... 11-14-

References..... 11-17-

Exercise ..... 11-17-

<b>Chapter 12: Free-Convection on a Vertical Plate and from a Horizontal Cylinder</b> .....	<b>12-1-</b>
Objectives .....	12-1-
Problem Description .....	12-1-
Setting up the Flow Simulation Project .....	12-2-
Inserting Goals .....	12-6-
Running Calculations .....	12-6-
Inserting Cut Plots .....	12-7-
Plotting Temperature and Velocity Profiles using Templates .....	12-8-
Theory .....	12-11-
Plotting Non-dimensional Temperature and Velocity Profiles using Templates .....	12-11-
Plotting Local Nusselt Number using Template .....	12-14-
Creating the SolidWorks Part for Free Convection from a Horizontal Cylinder .....	12-15-
Setting up the Flow Simulation Project for Free Convection from a Horizontal Cylinder .....	12-16-
Inserting Global Goal and Selecting 2D Flow for Free Convection from a Horizontal Cylinder .....	12-17-
Tabular Savings for Free Convection from Horizontal Cylinder .....	12-18-
Inserting Boundary Condition for Free Convection from Horizontal Cylinder .....	12-18-
Running Calculations for Free Convection from Horizontal Cylinder .....	12-19-
Inserting Cut Plots for Free Convection from Horizontal Cylinder .....	12-20-
Animating the Temperature Field for Free Convection from a Horizontal Cylinder .....	12-21-
References .....	12-22-
Exercises .....	12-22-
<b>Chapter 13: Swirling Flow in a Closed Cylindrical Container</b> .....	<b>13-1-</b>
Objectives .....	13-1-
Problem Description .....	13-1-
Creating the SolidWorks Part for Swirling Flow in a Closed Cylindrical Container .....	13-2-

Table of Contents

---

Setting up the Flow Simulation Project for Swirling Flow in a Closed Cylindrical Container ..... 13-3-

Creating Lids ..... 13-6-

Inserting Boundary Condition for Swirling Flow in a Closed Cylindrical Container ..... 13-6-

Inserting Global Goal for Swirling Flow in a Closed Cylindrical Container ..... 13-8-

Running the Calculations ..... 13-8-

Inserting Flow Trajectories ..... 13-10-

Reference ..... 13-11-

Exercise ..... 13-11-

**Chapter 14: Flow past a Model Rocket..... 14-1-**

Objectives ..... 14-1-

Problem Description..... 14-1-

Creating the SolidWorks Parts for the Model Rocket ..... 14-1-

Creating the SolidWorks Assembly for the Model Rocket ..... 14-9-

Setting up the Flow Simulation Project for Model Rocket ..... 14-17-

Inserting Goals for Model Rocket Flow ..... 14-18-

Running the Calculations ..... 14-20-

Inserting Cut Plots..... 14-21-

Reference ..... 14-22-

Exercises ..... 14-22-

**Notes:**