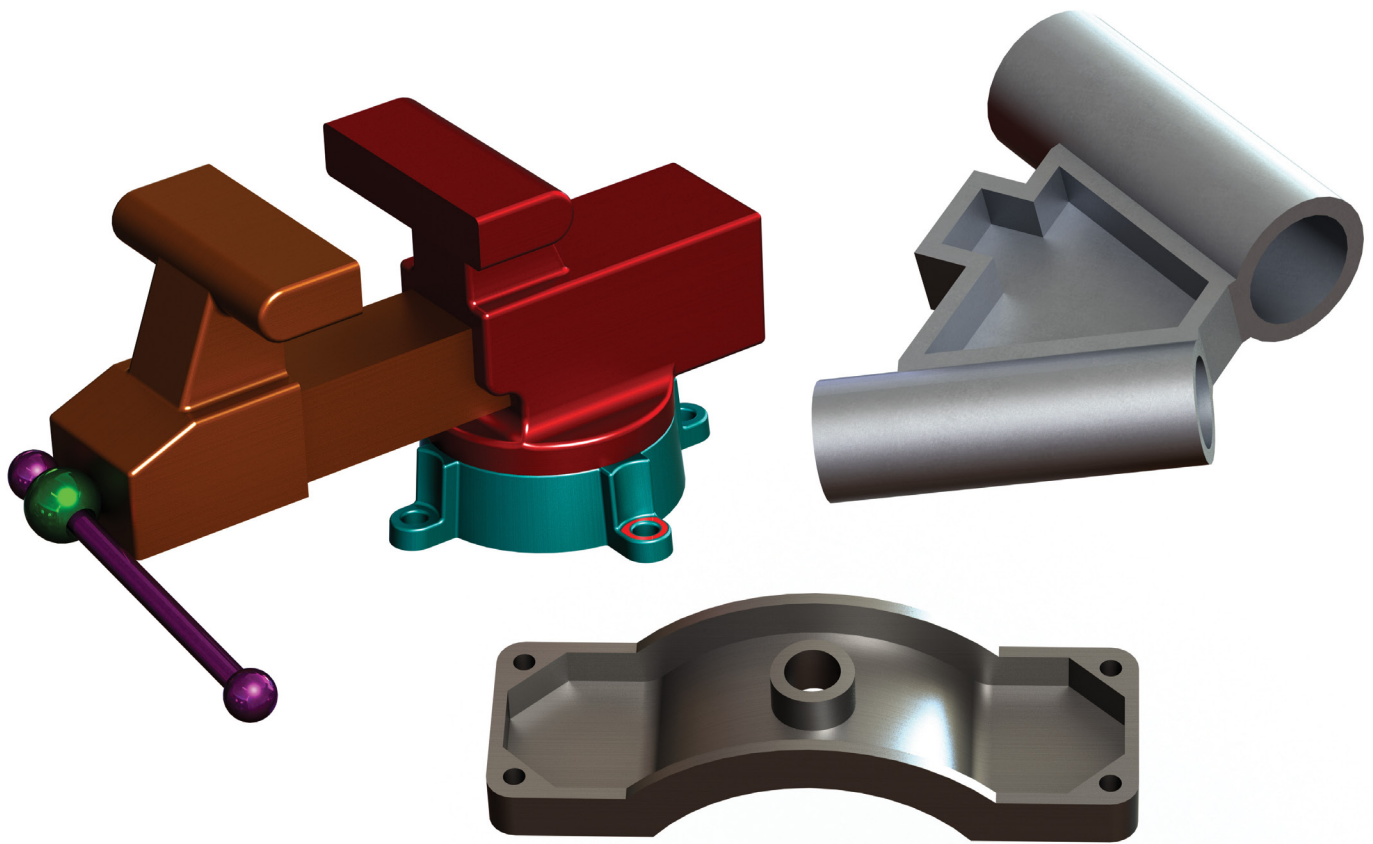


# Official Certified SolidWorks® Professional (CSWP) Certification Guide with Video Instruction

SolidWorks® 2012 - 2013

The only authorized CSWP  
preparation exam guide



David C. Planchard CSWP  
Marie P. Planchard CSWP



Visit the following websites to learn more about this book:



[amazon.com](https://www.amazon.com)

[BARNES & NOBLE](https://www.barnesandnoble.com)

[Google books](https://books.google.com)

# TABLE OF CONTENTS

Introduction	I-1
Goals	I-6
CSWP Audience	I-6
About the Authors	I-6
Acknowledgements	I-7
Contact the Authors	I-8
Note to Instructors	I-8
References	I-8
Table of Contents	I-10
About the Book	I-12
Testing Tips	I-13
Appendix	A-1
<b>Chapter 1 - Segment 1 of the CSWP CORE Exam</b>	<b>1-1</b>
Introduction	1-1
Read and Understand an Engineering document	1-3
Engineering Documentation Practices	1-4
Build a Part from a detailed illustration	1-5
Segment 1	1-5
Question 1 - Create a part	1-5
Question 2 - Modify the part using Link Values	1-22
Question 3 - Modify the part using Link Values / recover from errors	1-26
Question 4 - Modify the part using Link Values and equations	1-29
Question 5 - Modify the part using Link Values and equations	1-40
Practice Problems	1-44
Practice Problem 1 - Create a part	1-44
Practice Problem 2 - Modify the part using Link Values and equations	1-52
Practice Problem 3 - Modify the part using Link Values / recover from errors	1-56
<b>Chapter 2 - Segment 2 of the CSWP CORE Exam</b>	<b>2-1</b>
Introduction	2-1
Segment2	2-1
First Category	2-1
Creating Configuration	2-3
Question 1 - Number of configurations	2-3
Question 2 - Create a new configuration	2-4
Modifying Configurations	2-4
Question 3 - Suppress features in a configuration	2-4
Question 4 - New configuration	2-5
Question 5 - Design table	2-7
Second Category	2-10
Modifying features	2-10

Question 6 - Determine the mass	2-10
Question 7 - Modify a feature	2-10
Question 8 - Modify a feature	2-11
Question 9 - Modify a reference feature	2-11
Question 10 - Modify a reference feature	2-15
Question 11 - Modify a sketch and reference feature	2-16
Practice Problems	2-23
Creating Configuration	2-23
Question 1 - Number of configurations	2-23
Question 2 - Calculate the mass	2-23
Question 3 - Create a new configuration	2-24
Modifying features	2-26
Question 4 - Modify features and recover from errors	2-26
<b>Chapter 3- Segment 3 of the CSWP CORE Exam</b>	<b>3-1</b>
Introduction	3-1
Segment 3	3-2
Question 1 - Create the Base1 component	3-5
Question 2 - Create the Welding Arm assembly document	3-6
Question 3 - Insert the Arm and Top-Fixture-A assembly	3-9
Question 4 - Insert the Holder-Thongs-A assembly	3-14
Question 5 - Apply Collision Detection	3-16
Question 6 - Apply Interference Detection	3-17
Question 7 - Create the Hydraulic and Brace assembly	3-19
Question 8 - Insert the Hydraulic & Brace assembly (flexible)	3-20
Question 9 - Apply the Measure tool (Angle)	3-27
Question 10 - Calculate the center of gravity relative to Coordinate System1	3-35
Question 11 - Replace component in the assembly (recover from mate errors)	3-36
Practice Problems	3-43
Question 1 - Create the Bench Vice assembly document	3-43
Question 2 - Insert the Bench Vice-Base (re-orientate)	3-44
Question 3 - Insert the Bench Vice-Main Body assembly	3-46
Question 4 - Insert the Bench Vice-Threaded Rod and Sliding Jaw	3-49
Question 5 - Apply the Measure tool (Angle)	3-53
Question 6 - Insert the Bench Vice Handle	3-54
Question 7 - Apply the Collision Detection tool	3-55
Question 8 - Replace component in the assembly (recover from mate errors)	3-56
<b>Appendix</b>	<b>A-1</b>
Keyboard Shortcuts	A-1
SolidWorks Document Types	A-2