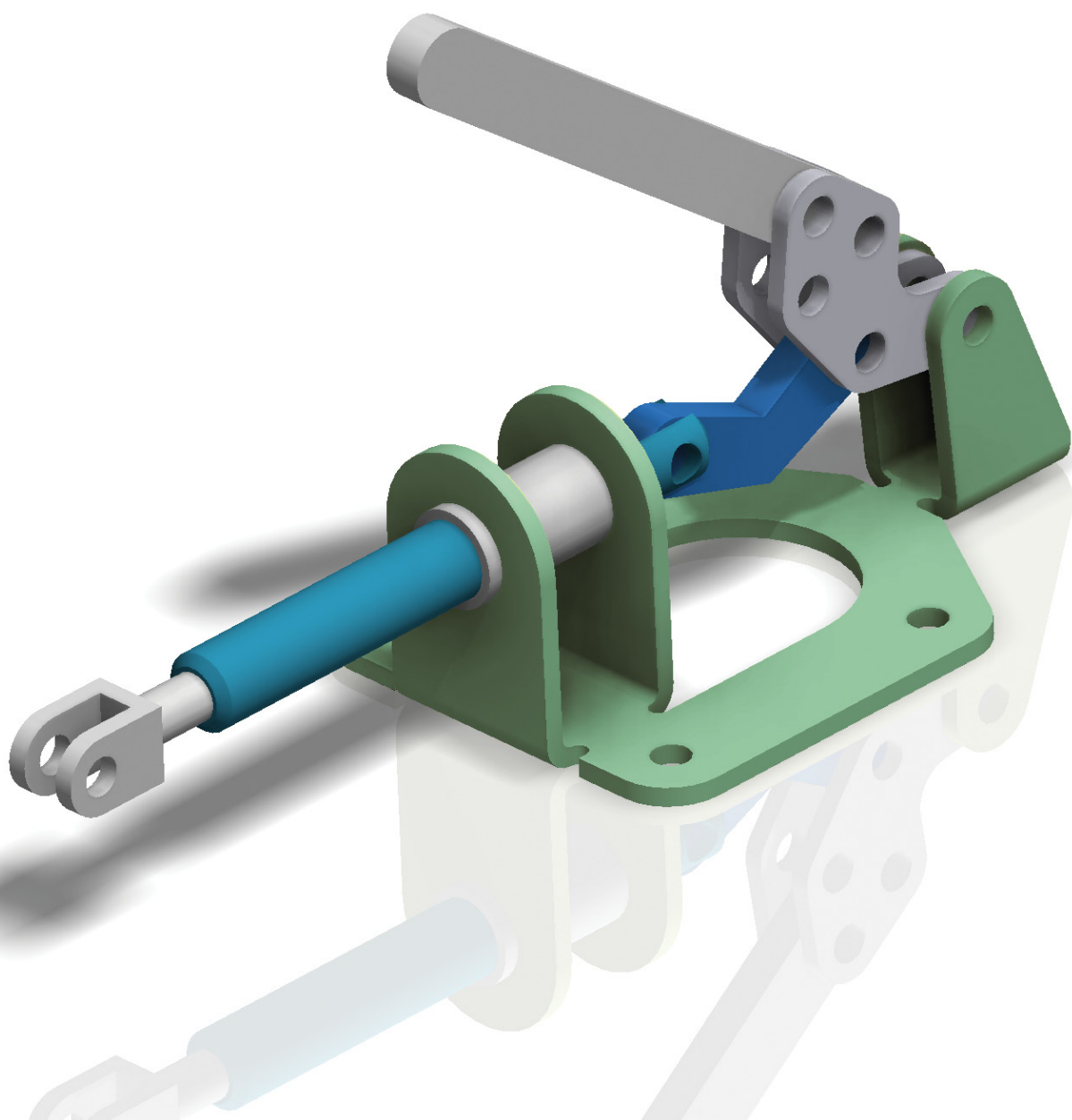


# An Introduction to Autodesk® Inventor® 2013 and AutoCAD® 2013

Randy H. Shih



Visit the following websites to learn more about this book:



[amazon.com](https://www.amazon.com)

[BARNES & NOBLE](https://www.barnesandnoble.com)

[Google books](https://books.google.com)

# Table of Contents

## Autodesk Inventor 2013

---

### Chapter 1

#### Getting Started

Introduction	1-2
Development of Computer Geometric Modeling	1-2
Feature-Based Parametric Modeling	1-6
Getting Started with Autodesk Inventor	1-7
The Screen Layout and Getting Started Toolbar	1-8
The New File Dialog Box and Units Setup	1-9
Autodesk Inventor Screen Layout	1-10
Application Menu	1-11
Quick Access Toolbar	1-11
Ribbon Tabs	1-11
Online Help Panel	1-11
2D Sketch Toolbar	1-12
Graphics Window	1-12
Message and Status Bar	1-12
Mouse Buttons	1-13
[Esc] - Canceling Commands	1-13
Autodesk Inventor Help System	1-14
Data Management using Inventor Project files	1-15
Setup of a New Inventor Project	1-16
The Content of an Inventor Project File	1-19
Leaving Autodesk Inventor	1-19

### Chapter 2

#### Parametric Modeling Fundamentals

Introduction	2-2
The Adjuster Design	2-3
Starting Autodesk Inventor	2-3
The default Autodesk Inventor Screen Layout	2-5
Sketch plane – It is an XY Monitor, but an XYZ World	2-6
Create Rough Sketches	2-8
Step 1: Create a Rough Sketch	2-9
Graphics Cursors	2-9
Geometric Constraint Symbols	2-10
Step 2: Apply/Modify Constraints and Dimensions	2-11
Dynamic Viewing Functions – <i>Zoom</i> and <i>Pan</i>	2-14
Modifying the Dimensions of the Sketch	2-14
Step 3: Completing the Base Solid Feature	2-15
Isometric View	2-16

Dynamic Rotation of the 3-D block - 3D Orbit	2-17
Dynamic Viewing - Quick Keys	2-19
Viewing Tools – Standard Toolbar	2-20
Display Modes	2-24
Orthographic vs. Perspective	2-24
Disable the Heads-Up Display Option	2-25
Step 4-1: Adding an Extruded Feature	2-26
Step 4-2: Adding a Cut Feature	2-31
Save the Model	2-34
Questions	2-36
Exercises	2-37

### **Chapter 3**

## **Constructive Solid Geometry Concepts**

Introduction	3-2
Binary Tree	3-3
The Locator Design	3-4
Modeling Strategy - CSG Binary Tree	3-5
Starting Autodesk Inventor	3-6
Base Feature	3-7
<i>GRID</i> intervals Setup	3-8
Model Dimensions Format	3-11
Modifying the Dimensions of the Sketch	3-11
Repositioning Dimensions	3-12
Using the Measure Tools	3-13
Completing the Base Solid Feature	3-16
Create the Next Solid Feature	3-17
Create a CUT Feature	3-21
Create a PLACED FEATURE	3-24
Create a Rectangular Cut Feature	3-26
Save the Model	3-28
Questions	3-29
Exercises	3-30

### **Chapter 4**

## **Model History Tree**

Introduction	4-2
The <i>Saddle Bracket</i> Design	4-3
Starting Autodesk Inventor	4-3
Modeling Strategy	4-4
The <i>Autodesk Inventor Browser</i>	4-5
Create the Base Feature	4-5
Adding the Second Solid Feature	4-8
Create a 2D Sketch	4-9
Renaming the Part Features	4-11

Adjusting the Width of the Base Feature	4-12
Adding a Placed Feature	4-13
Create a Rectangular Cut Feature	4-15
History-Based Part Modifications	4-16
A Design Change	4-17
Assigning and Calculating the Associated Physical Properties	4-20
Questions	4-22
Exercises	4-23

## **Chapter 5**

### **Parametric Constraints Fundamentals**

CONSTRAINTS and RELATIONS	5-2
Create a Simple Triangular Plate Design	5-2
Fully Constrained Geometry	5-3
Starting Autodesk Inventor	5-3
Displaying Existing Constraints	5-4
Applying Geometric/Dimensional Constraints	5-6
Over-Constraining and Driven Dimensions	5-10
Deleting Existing Constraints	5-11
Using the Auto Dimension Command	5-12
Constraint and Sketch Settings	5-16
Parametric Relations	5-17
Dimensional Values and Dimensional Variables	5-19
Parametric Equations	5-20
Viewing the Established Parameters and Relations	5-22
Saving the Model File	5-23
Using the Measure Tools	5-24
Questions	5-28
Exercises	5-29

## **Chapter 6**

### **Geometric Construction Tools**

Introduction	6-2
The Gasket Design	6-2
Modeling Strategy	6-3
Starting Autodesk Inventor	6-4
Create a 2D Sketch	6-5
Edit the Sketch by Dragging the Sketched Entities	6-7
Add Additional Constraints	6-9
Use the <i>Trim</i> and <i>Extend</i> Commands	6-10
The <i>Auto Dimension</i> Command	6-12
Create Fillets and Completing the Sketch	6-14
Fully Constrained Geometry	6-15
Profile Sketch	6-17
Redefine the Sketch and the Profile	6-18

Create an OFFSET Cut Feature	6-22
Questions	6-25
Exercises	6-26

## **Chapter 7**

### **Parent/Child Relationships and the BORN Technique**

Introduction	7-2
The BORN Technique	7-2
The U-Bracket Design	7-3
Starting Autodesk Inventor	7-4
Sketch Plane Settings	7-4
Apply the BORN Technique	7-5
Create the 2-D Sketch of the Base Feature	7-7
Create the First Extrude Feature	7-11
The Implied Parent/Child Relationships	7-12
Create the Second Solid Feature	7-12
Create the First Cut Feature	7-16
Create the Second Cut Feature	7-17
Examine the Parent/Child Relationships	7-19
Modify a Parent Dimension	7-20
A Design Change	7-21
Feature Suppression	7-22
A Different Approach to the CENTER_DRILL Feature	7-23
Suppress the Rect_Cut Feature	7-25
Create a Circular Cut Feature	7-26
A Flexible Design Approach	7-28
View and Edit Material Properties	7-29
Questions	7-31
Exercises	7-32

## **Chapter 8**

### **Part Drawings and Associative Functionality**

Drawings from Parts and Associative Functionality	8-2
Starting Autodesk Inventor	8-3
Drawing Mode - 2D Paper Space	8-3
Drawing Sheet Format	8-5
Using the Pre-Defined Drawing Sheet Formats	8-7
Delete, Activate, and Edit Drawing Sheets	8-9
Add a Base View	8-10
Create Projected Views	8-11
Adjust the View Scale	8-12
Repositioning Views	8-13
Display Feature Dimensions	8-14
Repositioning and Hiding Feature Dimensions	8-16
Add Additional Dimensions – Reference Dimensions	8-18

Add Center Marks and Center Lines	8-19
Complete the Drawing Sheet	8-22
Associative Functionality – Modifying Feature Dimensions	8-23
3D Annotations in Isometric Views	8-26
Questions	8-34
Exercises	8-35

## **Chapter 9**

### **Symmetrical Features in Designs**

Introduction	9-2
A Revolved Design: PULLEY	9-2
Modeling Strategy - A Revolved Design	9-3
Starting Autodesk Inventor	9-4
Setup the Display of the Sketch Plane	9-4
Create the 2-D Sketch for the Revolved Feature	9-5
Create the Revolved Feature	9-9
Mirroring Features	9-10
Create a Pattern Leader Using Construction Geometry	9-12
Circular Pattern	9-17
Examine the Design Parameters	9-19
Drawing Mode – Defining New Border and Title Block	9-19
Create a Drawing Template	9-22
Create the necessary Views	9-23
Retrieve Dimensions – Features Option	9-26
Associative Functionality – A Design Change	9-28
Add Center Lines to the Pattern Feature	9-30
Complete the Drawing	9-31
Questions	9-34
Exercises	9-35

## **Chapter 10**

### **Assembly Modeling - Putting It All Together**

Introduction	10-2
Assembly Modeling Methodology	10-3
The Shaft Support Assembly	10-4
Additional <i>Parts</i>	10-4
(1) Collar	10-4
(2) Bearing	10-5
(3) Base-Plate	10-5
(4) Cap-Screw	10-6
Starting Autodesk Inventor	10-7
Placing the First Component	10-8
Placing the Second Component	10-9
Degrees of Freedom and Constraints	10-10
Assembly Constraints	10-11

Apply the First Assembly Constraint	10-13
Apply a Second Mate Assembly Constraint	10-15
Constrained Move	10-16
Apply a Flush Constraint	10-17
Placing the Third Component	10-19
Applying an Insert Constraint	10-19
Assemble the Cap-Screws	10-21
Exploded View of the Assembly	10-22
Editing the Components	10-24
Adaptive Design Approach	10-25
Delete and Re-apply Assembly Constraints	10-29
Setup a Drawing of the Assembly Model	10-31
Create a Parts List	10-33
Edit the Parts List	10-34
Changing the Material Type	10-36
Complete the Assembly Drawing	10-38
Bill of Materials	10-39
(a) BOM from Parts List	10-39
(b) BOM from Assembly Model	10-40
Questions	10-41
Exercises	10-42

## Chapter 11

### Introduction to Stress Analysis

Introduction	11-2
Problem Statement	11-4
Preliminary Analysis	11-4
• Maximum Displacement	11-5
Finite Element Analysis Procedure	11-6
Create the <i>Autodesk Inventor</i> Part	11-7
Create the 2D Sketch for the Plate	11-8
Assigning the Material Properties	11-10
Switch to the <i>Stress Analysis</i> Module	11-11
Create an FEA Simulation	11-12
Apply Constraints and Loads	11-14
Create a Mesh and Run the Solver	11-16
Refinement of the FEA Mesh – Global Element Size	11-18
Refinement of the FEA Mesh – Local Element Size	11-20
Comparison of Results	11-23
Create an HTML Report	11-24
Geometric Considerations of Finite Elements	11-25
Conclusion	11-26
Summary of Modeling Considerations	11-26
Questions	11-27
Exercises	11-28



---

# AutoCAD 2013

---

## Chapter 12 Getting Started

Introduction	12-2
Development of Computer Aided Design	12-2
Why use AutoCAD® 2013	12-5
Getting Started with AutoCAD® 2013	12-7
AutoCAD® 2013 Screen Layout	12-8
Application Menu	12-9
Workspace Switching	12-9
Quick Access Toolbar	12-9
AutoCAD Menu Bar	12-9
Graphics Window	12-10
Graphics Cursor or Crosshairs	12-10
Command Prompt Area	12-10
Cursor Coordinates	12-10
Status Toolbar	12-10
Ribbon Tabs and Panels	12-10
Draw and Modify Toolbar Panel	12-11
Layers Control Toolbar Panel	12-11
Annotation Toolbar Panel	12-11
Layout/Model Toolbar	12-11
Viewing Toolbar	12-11
Mouse Buttons	12-12
[Esc] - Canceling Commands	12-12
On-Line Help	12-13
Leaving AutoCAD® 2013	12-14
Creating a CAD File Folder	12-15

## Chapter 13 AutoCAD Fundamentals

Introduction	13-2
Starting Up AutoCAD® 2013	13-2
Drawing Units Display Setup	13-4
Drawing Area Setup	13-5
Using the <i>InfoCenter</i> to Get More Information	13-6
Drawing Lines with the <i>LINE</i> Command	13-7
Visual Reference	13-9
<i>GRID</i> ON	13-10
<i>SNAP Mode</i> ON	13-11
Using the <i>ERASER</i>	13-12
Repeat the Last Command	13-13

The CAD Database and the User Coordinate System	13-14
Changing to the 2D UCS Icon Display	13-15
Cartesian and Polar Coordinate Systems	13-16
Absolute and Relative Coordinates	13-16
Defining Positions	13-17
The <i>Guide Plate</i>	13-18
Creating <i>Circles</i>	13-22
Save the CAD File	13-24
Close the Current Drawing	13-25
The <i>Spacer</i> Design	13-26
Start a New Drawing	13-26
Drawing Units Setup	13-27
Drawing Area Setup	13-28
Using the Line Command	13-30
Using the <i>ERASE</i> Command	13-32
Using the Arc Command	13-32
Using the Circle Command	13-34
Saving the CAD Design	13-35
Exit AutoCAD	13-35
Review Questions	13-36
Exercises	13-37

## Chapter 14

### Basic Object Construction Tools

Introduction	14-2
Starting Up AutoCAD® 2013	14-2
Dynamic Input	14-3
The <i>RockerArm</i> Design	14-6
Activate the Startup Option	14-7
Drawing Units Display Setup	14-8
<i>GRID</i> and <i>SNAP</i> Intervals Setup	14-9
Drawing Area Setup	14-10
Referencing the World Coordinate System	14-11
Creating <i>Circles</i>	14-12
<i>Object Snap</i> Toolbar	14-13
Using the <i>LINE</i> command	14-14
Creating a <i>TTR Circles</i>	14-16
Using the <i>TRIM</i> Command	14-18
Using the <i>Polygon</i> Command	14-20
Creating a Concentric <i>Circle</i>	14-22
Using the QuickCal Calculator to Measure Distance and Angle	14-23
Saving the CAD file	14-27
Exit AutoCAD	14-27
Review Questions	14-28
Exercises	14-29

## Chapter 15 Geometric Construction and Editing Tools

Geometric Constructions	15-2
Starting Up AutoCAD® 2013	15-3
Geometric Construction - CAD Method	15-4
• Bisection of a Line or Arc	15-4
• Bisection of an Angle	15-7
• Transfer of an Angle	15-9
• Dividing a Given Line into a Number of Equal Parts	15-13
• Circle through Three Points	15-15
• Line Tangent to a Circle from a Given Point	15-16
• Circle of a Given Radius Tangent to Two Given Lines	15-17
The <i>Gasket</i> Design	15-20
Drawing Units Display Setup	15-21
<i>GRID</i> and <i>SNAP</i> Intervals Setup	15-22
Using the <i>LINE</i> Command	15-23
<i>Object Snap</i> Toolbar	15-25
Using the <i>EXTEND</i> Command	15-28
Using the <i>TRIM</i> Command	15-29
Creating a <i>TTR</i> Circle	15-30
Using the <i>FILLET</i> Command	15-31
Converting Objects into a <i>Polyline</i>	15-32
Using the <i>OFFSET</i> Command	15-33
Using the Area Inquiry Tool to Measure Area and Perimeter	15-34
Using the <i>EXPLODE</i> Command	15-36
Create another <i>FILLET</i>	15-36
Saving the CAD file	15-37
Exit AutoCAD	15-37
Review Questions	15-38
Exercises	15-39

## Chapter 16 Orthographic Views in Multiview Drawings

Introduction	16-2
The LOCATOR Design	16-2
The <i>Locator</i> Part	16-3
Starting Up AutoCAD® 2013	16-3
<i>Layers</i> Setup	16-4
Drawing <i>Construction Lines</i>	16-5
Using the <i>OFFSET</i> Command	16-5
Set Layer <i>Object</i> as the Current Layer	16-7
Using the <i>Running Object Snaps</i>	16-7
Creating <i>Object Lines</i>	16-9
Turn <i>OFF</i> the Construction Lines	16-10

Adding More Objects in the Front View	16-10
AutoCAD's AutoSnap™ and AutoTrack™ Features	16-11
Adding More Objects in the Top View	16-13
Drawing Using the <i>Miter Line</i> Method	16-17
More <i>Layers Setup</i>	16-19
Top View to Side View Projection	16-20
Completing the Front View	16-22
Object Information Using the List Command	16-24
Object Information Using the Properties Command	16-25
Review Questions	16-26
Exercises	16-27

## Chapter 17

### Basic Dimensioning and Notes

Introduction	17-2
The Bracket Design	17-2
Starting Up AutoCAD® 2013	17-3
Layers Setup	17-4
The Bracket Design	17-5
Drawing Construction Lines	17-6
Using the <i>OFFSET</i> Command	17-6
Set Layer <i>Object_Lines</i> as the <i>Current Layer</i>	17-8
Creating Object Lines	17-8
Creating Hidden Lines	17-9
Creating Center Lines	17-10
Turn <i>OFF</i> the Construction Lines	17-10
Using the <i>FILLET</i> Command	17-11
Saving the Completed CAD Design	17-12
Accessing the Dimensioning Commands	17-13
The <i>Dimension Toolbar</i>	17-14
Using <i>Dimension Style Manager</i>	17-14
Dimensions Nomenclature and Basics	17-15
Using the <i>Center Mark</i> Command	17-18
Adding <i>Linear</i> Dimensions	17-19
Adding <i>Angular</i> Dimensions	17-20
Adding <i>Radius</i> and <i>Diameter</i> Dimensions	17-21
Using the <i>SINGLE LINE TEXT</i> Command	17-22
Adding Special Characters	17-23
Saving the Design	17-24
A Special Note on Layers Containing Dimensions	17-24
Review Questions	17-25
Exercises	17-26