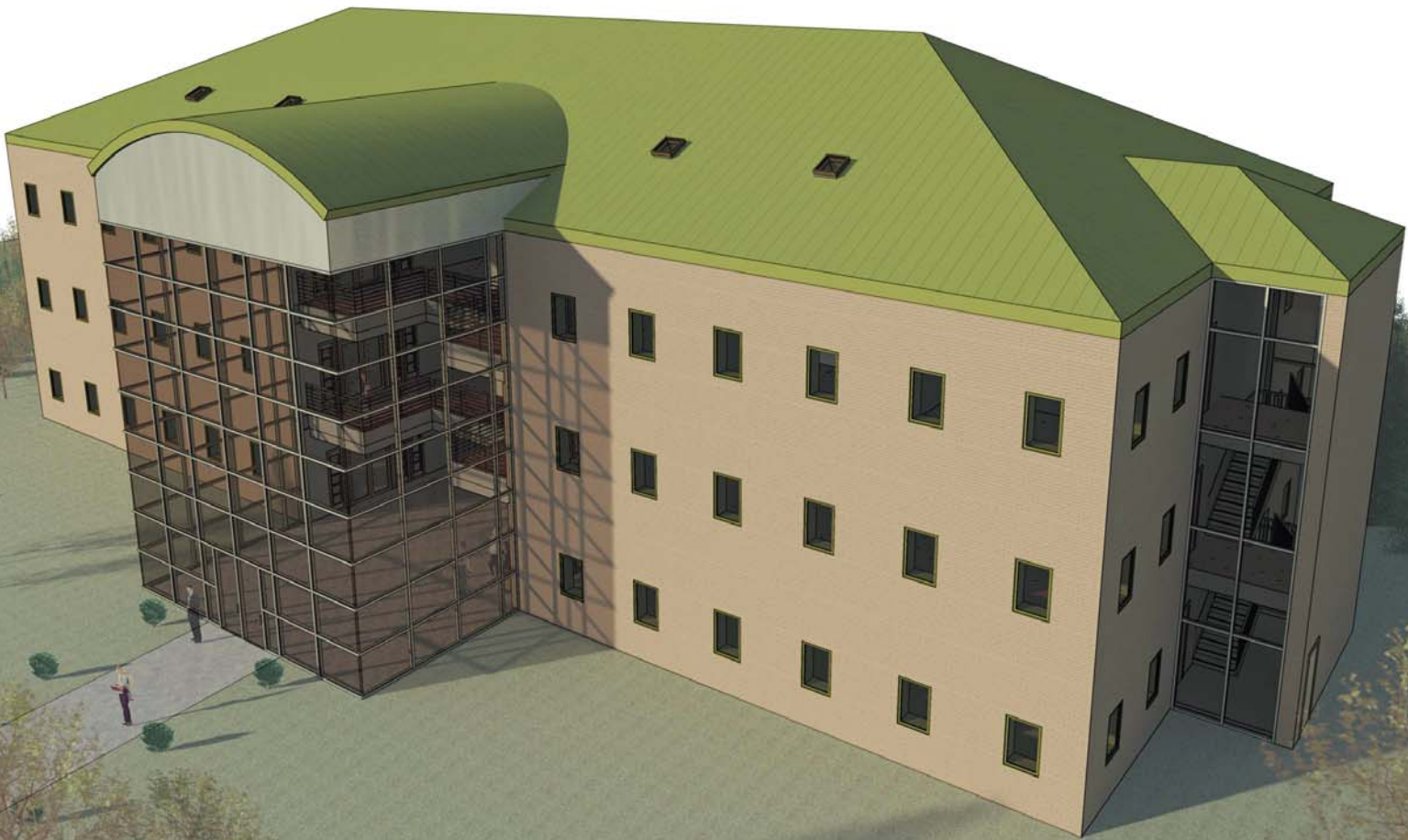


Commercial Design Using Autodesk® Revit® Architecture 2012

Daniel John Stine CSI, CDT



SDC
PUBLICATIONS

www.SDCpublications.com

Schroff Development Corporation



New Chapter on DVD: Introduction to SketchUp

Table of Contents

1.	Getting Started With Revit Architecture 2012	
1-1	What is Revit Architecture 2012?	1-1
1-2	Overview of the Revit User Interface	1-10
1-3	Open, Save & Close an Existing Project	1-21
1-4	Creating a New Project	1-26
1-5	Using Pan & Zoom to View Your Drawings	1-28
1-6	Using Revit's Help System	1-33
	<i>Self-Exam & Review Questions</i>	
2.	Quick Start: Small Office	
2-1	Walls, Grids and Dimensions	2-1
2-2	Doors	2-18
2-3	Windows	2-25
2-4	Roof	2-28
2-5	Annotation, Room Tags & Schedules	2-33
2-6	Printing	2-38
	<i>Self-Exam & Review Questions</i>	
3.	Office Building: FLOOR PLAN (First Floor)	
3-1	Project Overview	3-1
3-2	Exterior Walls	3-3
3-3	Interior Walls	3-11
3-4	Elevator	3-19
3-5	Doors and Windows	3-25
	<i>Self-Exam & Review Questions</i>	
4.	Office Building: FLOOR PLANS (Second and Third Floors)	
4-1	Copy Common Walls from First Floor	4-1
4-2	Additional Interior Walls	4-7
4-3	Setting the Floor-to-Floor Height	4-10
4-4	Stairs	4-11
	<i>Self-Exam & Review Questions</i>	
5.	Office Building: ROOF	
5-1	Hip Roof	5-1
5-2	Skylights	5-11
5-3	Roof Design Options (Style, Pitch & Overhang)	5-15
	<i>Self-Exam & Review Questions</i>	
6.	Office Building: FLOOR SYSTEMS and REFLECTED CEILING PLANS	
6-1	Floor Systems	6-1
6-2	Ceiling Systems (Susp. ACT & Gypsum Board)	6-10
6-3	Placing Fixtures (Lights & Diffusers)	6-19
6-4	Annotations	6-23
	<i>Self-Exam & Review Questions</i>	
7.	Office Building: INTERIOR and EXTERIOR ELEVATIONS	
7-1	Creating & Viewing Parametric Exterior Elevations	7-1
7-2	Modifying the Project Model: Exterior Elevations	7-7
7-3	Creating & Viewing Parametric Interior Elevations	7-11
7-4	Modifying the Project Model: Interior Elevations	7-15
7-5	Adding Mullions to a Curtainwall	7-17
7-6	Design Options	7-23
	<i>Self-Exam & Review Questions</i>	

8. Office Building: SECTIONS and DETAILS	
8-1 Specify Section Cutting Plane in Plan View	8-1
8-2 Modifying the Project Model in Section View	8-6
8-3 Wall Sections	8-8
8-4 Annotations	8-12
8-5 Details	8-15
<i>Self-Exam & Review Questions</i>	
9. Office Building: INTERIOR DESIGN	
9-1 Toilet Room Layouts	9-1
9-2 Cabinets	9-8
9-3 Furniture	9-13
9-4 Adding Guardrails	9-18
<i>Self-Exam & Review Questions</i>	
10. Office Building: SCHEDULES	
10-1 Room & Door Tags	10-1
10-2 Generate a Door Schedule	10-5
10-3 Generate Room Finish Schedule	10-10
<i>Self-Exam & Review Questions</i>	
11. Office Building: SITE and RENDERING	
11-1 Site Tools	11-1
11-2 Creating an Exterior Rendering	11-10
11-3 Rendering an Isometric in Section	11-22
11-4 Creating an Interior Rendering	11-27
11-5 Adding People to the Rendering	11-35
<i>Self-Exam & Review Questions</i>	
12. Office Building: CONSTRUCTION DOCUMENTS SET	
12-1 Setting Up a Sheet	12-1
12-2 Sheet Index	12-12
12-3 Printing a Set of Drawings	12-16
<i>Self-Exam & Review Questions</i>	
13. Introduction to Revit Content Creation	
13-1 Basic Family Concepts	13-1
13-2 The Box: Creating the Geometry	13-13
13-3 The Box: Adding Parameters	13-29
13-4 The Box: Formulas and Materials	13-45
13-5 The Box: Family Types and Categories	13-59
<i>Self-Exam & Review Questions</i>	

**Appendix A – Autodesk Revit Architecture Certification Exam,
Introduction and sample test**

Index

DVD Content

- 14. INTRODUCTION TO COMPUTERS - 50 pages**
 - 14-1 Computer Basics: Terms and Functions
 - 14-2 Overview of the Windows User Interface
 - 14-3 File Management Introduction
 - 14-4 File Management Exercises
 - Self-Exam & Review Questions*

- 15. INTRODUCTION TO SKETCHUP - 78 pages**
 - 15-1 What is Google SketchUp used for?
 - 15-2 Overview of the SketchUp User Interface
 - 15-3 Open, Save and Close
 - 15-4 Viewing SketchUp Models
 - 15-5 Help System
 - 15-6 The Basic Entities
 - 15-7 Beginning with the Basics – 2D Sketching
 - 15-8 3D Modeling
 - 15-9 Adding Materials

Appendix B – ROOF STUDY WORKBOOK – DRAFT EDITION - 89 pages

Appendix C – FINDING MISSING ELEMENTS IN REVIT - 22 pages

Videos

- 1. User Interface
- 2. Walls
- 3. Doors and Windows
- 4. Stairs
- 5. Roofs
- 6. Floors
- 7. Ceilings
- 8. Elevations
- 9. Sections
- 10. Schedules
- 11. Rendering
- 12. Design Options
- 13. Sheets and Sheet Lists
- 14. Worksharing Introduction