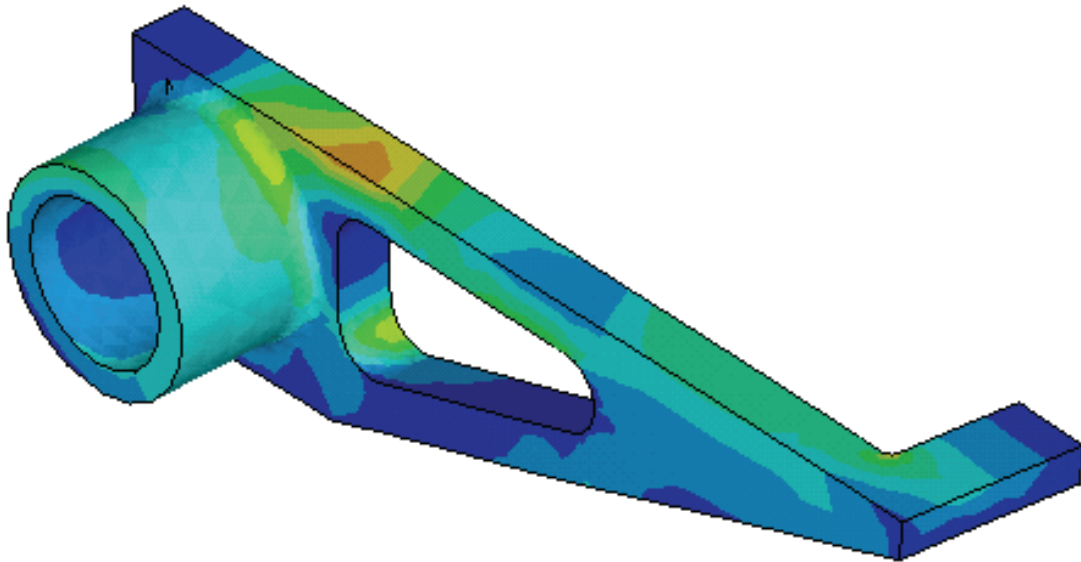


# **ANSYS<sup>®</sup> Tutorial**

*Release 13*

*Structural & Thermal Analysis Using the  
ANSYS Mechanical APDL Release 13 Environment*



**Kent L. Lawrence**

Mechanical and Aerospace Engineering  
University of Texas at Arlington

**SDC**  
PUBLICATIONS

[www.SDCpublications.com](http://www.SDCpublications.com)

---

Schroff Development Corporation

---

# ***TABLE OF CONTENTS***

<b>PREFACE</b>	v
<b>INTRODUCTION</b>	
I-1 OVERVIEW	I-1
I-2 THE FEM PROCESS	I-1
I-3 THE LESSONS	I-2
I-4 THE ANSYS INTERFACE	I-3
I-5 SUMMARY	I-5
<b>LESSON 1 – TRUSSES</b>	
1-1 OVERVIEW	1-1
1-2 INTRODUCTION	1-1
1-3 SHELF TRUSS	1-2
1-4 TUTORIAL 1A – SHELF TRUSS	1-4
1-5 TUTORIAL 1B – MODIFIED TRUSS	1-15
1-6 TUTORIAL 1C – INTERACTIVE PREPROCESSING	1-17
1-7 HOW IT WORKS	1-28
1-8 SUMMARY	1-29
1-9 PROBLEMS	1-30
<b>LESSON 2 – PLANE STRESS, PLANE STRAIN</b>	
2-1 OVERVIEW	2-1
2-2 INTRODUCTION	2-1
2-3 PLATE WITH CENTRAL HOLE	2-2
2-4 TUTORIAL 2A – PLATE	2-3
2-5 THE APPROXIMATE NATURE OF FEM	2-14
2-6 ANSYS FILES	2-15

---

2-7 ANSYS GEOMETRY	2-15
2-8 SEATBELT COMPONENT	2-16
2-9 MAPPED MESHING	2-23
2-10 CONVERGENCE	2-25
2-11 TWO-DIMENSIONAL ELEMENT OPTIONS	2-25
2-12 SUMMARY	2-26
2-13 PROBLEMS	2-26

### **LESSON 3 – AXISYMMETRIC PROBLEMS**

3-1 OVERVIEW	3-1
3-2 INTRODUCTION	3-1
3-3 CYLINDRICAL PRESSURE VESSEL	3-2
3-4 TUTORIAL 3A – PRESSURE VESSEL	3-3
3-5 OTHER ELEMENTS	3-12
3-6 SUMMARY	3-12
3-7 PROBLEMS	3-12

### **LESSON 4 – THREE-DIMENSIONAL PROBLEMS**

4-1 OVERVIEW	4-1
4-2 INTRODUCTION	4-1
4-3 CYLINDRICAL PRESSURE VESSEL	4-1
4-4 TUTORIAL 4A – PRESSURE VESSEL	4-2
4-5 SMART SIZE	4-9
4-6 CYCLIC SYMMETRY	4-9
4-7 TUTORIAL 4B – USING CYCLIC SYMMETRY	4-10
4-8 BRICKS	4-12
4-9 TUTORIAL 4C – MAPPED MESH PRESSURE VESSEL	4-13
4-10 SWEEPING	4-17
4-11 TUTORIAL 4D – SWEPT MESH	4-17
4-12 SUMMARY	4-18
4-13 PROBLEMS	4-19

---

---

**LESSON 5 – BEAMS**

5-1 OVERVIEW	5-1
5-2 INTRODUCTION	5-1
5-3 TUTORIAL 5A – CANTILEVER BEAM	5-2
5-4 2-D FRAME	5-8
5-5 TUTORIAL 5B – 2-D FRAME	5-9
5-6 BEAM MODELS IN 3-D	5-14
5-7 TUTORIAL 5C – ‘L’ BEAM	5-14
5-8 SUMMARY	5-19
5-9 PROBLEMS	5-20

**LESSON 6 – PLATES**

6-1 OVERVIEW	6-1
6-2 INTRODUCTION	6-1
6-3 SQUARE PLATE	6-2
6-4 TUTORIAL 6A – SQUARE PLATE	6-2
6-5 TUTORIAL 6B – CHANNEL BEAM	6-7
6-6 SUMMARY	6-10
6-7 PROBLEMS	6-10

**LESSON 7 – HEAT TRANSFER, THERMAL STRESS**

7-1 OVERVIEW	7-1
7-2 INTRODUCTION	7-1
7-3 HEAT TRANSFER	7-1
7-4 TUTORIAL 7A – TEMPERATURE DISTRIBUTION IN A CYLINDER	7-2
7-5 THERMAL STRESS	7-7
7-6 TUTORIAL 7B – UNIFORM TEMPERATURE CHANGE	7-7
7-7 TUTORIAL 7C – THERMAL STRESS	7-10
7-8 SUMMARY	7-15
7-9 PROBLEMS	7-16

---

**LESSON 8 – SELECTED TOPICS**

8-1 OVERVIEW	8-1
8-2 LOADING DUE TO GRAVITY	8-1
8-3 MULTIPLE LOAD CASES	8-2
8-4 ANSYS MATERIALS DATABASE	8-5
8-5 ANSYS HELP	8-6
8-6 CONSTRAINTS	8-7
8-7 NATURAL FREQUENCIES	8-7
8-8 TUTORIAL 9A – CANTILEVER BEAM FREQUENCIES	8-7
8-9 ANSYS Files	8-12
8-10 SUMMARY	8-13

**REFERENCES**

<b>INDEX</b>	i-1
--------------	-----

---