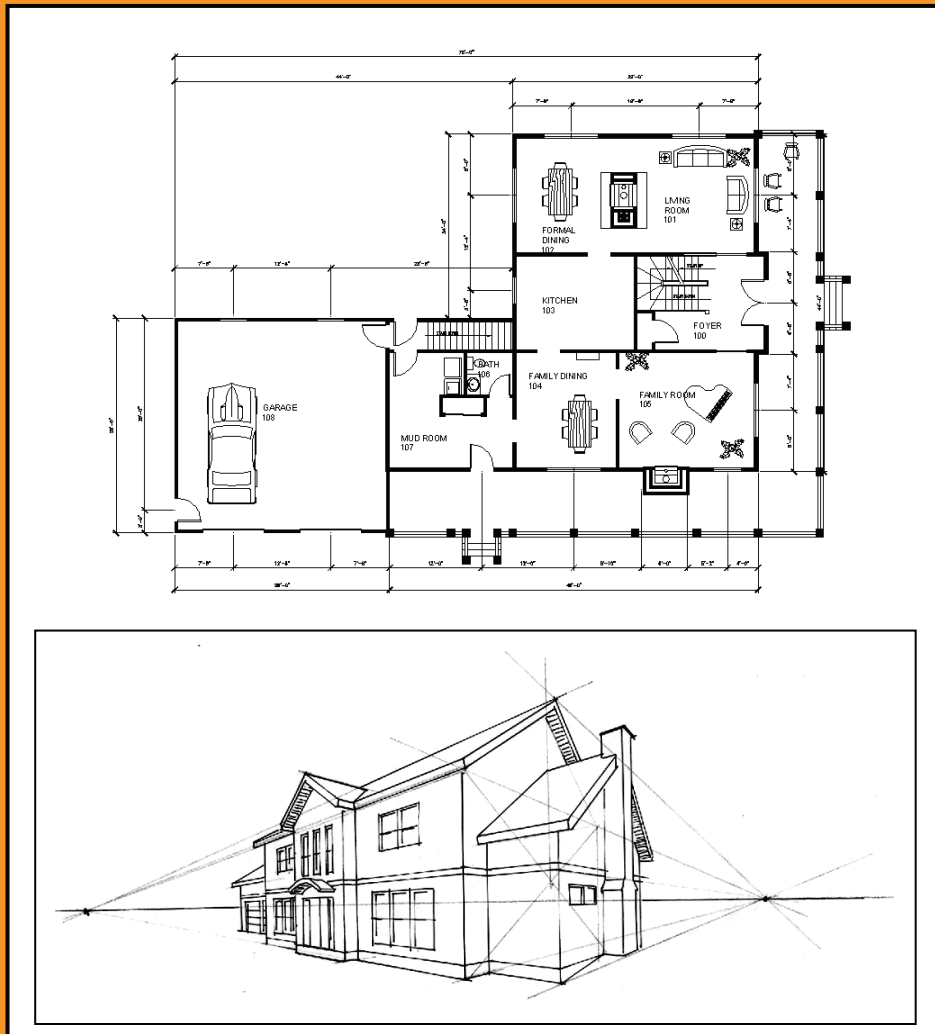


# Residential Design Using AutoCAD® 2012

Introduction to AutoCAD ♦ Hand Sketching ♦ Video Instruction



**Daniel John Stine**



**SDC**  
PUBLICATIONS

[www.SDCpublications.com](http://www.SDCpublications.com)

Schroff Development Corporation

**NEW CHAPTER**  
included on the CD  
**Introduction to  
SketchUp**

## *Table of Contents*

	<b>Page</b>
<b>INTRODUCTION – Sketching Exercises</b>	
I-1 Introduction	I-1
I-2 Freehand sketching from photos	I-8
I-3 Surveying and Sketching Objects	I-19
I-4 Sketching Floor Plans	I-23
I-5 Sketching Elevations – two point perspective	I-31
I-6 Sketching Elevations – one point perspective	I-47
I-7 Sketching Plans – one point perspective	I-55
<b>1. Getting Started with AutoCAD 2012</b>	
1-1 What is AutoCAD 2012?	1-1
1-2 Overview of the AutoCAD 2012 User Interface	1-3
1-3 Open, Save & Close an Existing Drawing	1-11
1-4 Creating a New Drawing	1-15
1-5 Using Pan & Zoom to View Your Drawings	1-17
1-6 Using the AutoCAD Help System	1-23
<i>Self-Exam &amp; Review Questions</i>	1-27
<b>2. Crash Course Introduction (The Basics)</b>	
2-1 Lines and Shapes	2-1
2-2 Object Snaps	2-16
2-3 Modify Tools	2-21
2-4 Annotations	2-34
2-5 Printing	2-38
<i>Self-Exam &amp; Review Questions</i>	2-42
<b>3. Drawing Architectural Objects (Draw &amp; Modify)</b>	
3-1 Rectilinear Objects	3-1
3-2 Objects with Curves	3-9
3-3 Using Layers	3-31
<i>Self-Exam &amp; Review Questions</i>	3-41
<b>4. Residential Project: FLOOR PLANS</b>	
4-1 Walls	4-1
4-2 Doors	4-21
4-3 Windows	4-36
4-4 Annotation and Dimensions	4-42
<i>Self-Exam &amp; Review Questions</i>	4-53
<u>Additional Tasks</u>	
Task 4-1 Fireplace (north)	4-54
Task 4-2 Main Stairway	4-59
Task 4-3 Secondary Stairway	4-60
Task 4-4 Porch	4-61
Task 4-5 Garage Steps	4-62
Task 4-6 Fireplace (south)	4-62
<b>5. Residential Project: EXTERIOR ELEVATIONS</b>	
5-1 Elevation outlines	5-1
5-2 Windows	5-18
5-3 Doors	5-29
5-4 Chimney, Railing and Siding	5-37
<i>Self-Exam &amp; Review Questions</i>	5-51
<u>Additional Tasks</u>	
Task 5-1 Grade Line	5-52
Task 5-2 Draw the other Chimney	5-54
Task 5-3 Print content from a web site	5-55
Task 5-4 Adding Foundation lines	5-55

	<b>Page</b>
<b>6. Residential Project: SECTIONS</b>	
6-1 Building Sections	6-1
6-2 Typical Wall Section	6-5
6-3 Adding Annotation to the Wall Section	6-9
6-4 Stair Section	6-13
<i>Self-Exam &amp; Review Questions</i>	6-23
<u>Additional Tasks</u>	
Task 6-1 Additional Building Sections	6-24
Task 6-2 Wall Section at Garage	6-24
Task 6-3 Hatch Wall Sections	6-24
Task 6-4 Stair Detail	6-25
<b>7. Residential Project: PLAN LAYOUT &amp; INTERIOR ELEVATIONS</b>	
7-1 Bathroom Layout	7-1
7-2 Bathroom Elevation	7-8
7-3 Adding Furnishings to your Floor Plans	7-21
7-4 Using Tool Palettes	7-27
<i>Self-Exam &amp; Review Questions</i>	7-38
<u>Additional Tasks</u>	
Task 7-1 Toilet Room Plan Layouts	7-39
Task 7-2 Toilet Room Elevations	7-39
Task 7-3 Furniture Layout	7-39
<b>8. Residential Project: SITE PLAN</b>	
8-1 Draw existing survey	8-1
8-2 Add House, Driveway and Walks	8-10
8-3 Layout New Contours	8-14
<i>Self-Exam &amp; Review Questions</i>	8-21
<u>Additional Tasks</u>	
Task 8-1 Add items to the Site Plan	8-22
Task 8-2 Draw another grade profile	8-22
Task 8-3 Update grade profile for each exterior elev.	8-22
<b>9. Residential Project: SCHEDULES &amp; SET UP SHEET</b>	
9-1 Room Finish Schedule	9-1
9-2 Sheet Setup & Management (Sheet Sets)	9-17
9-3 Sheet Index	9-46
<i>Self-Exam &amp; Review Questions</i>	9-53
<u>Additional Tasks</u>	
Task 9-1 Create Door Schedule	9-54
Task 9-2 Place all your views on sheets	9-54
Task 9-3 Place callout bubbles on your sheets	9-54
Task 9-4 Add additional raster images to your drawing	9-54
<b>10. Residential Project: LINEWEIGHTS &amp; PLOTTING</b>	
10-1 Lineweights	10-1
10-2 Plotting: Digital Set	10-12
10-3 Plotting: Hardcopy Set	10-25
<i>Self-Exam &amp; Review Questions</i>	10-35
<u>Additional Tasks</u>	
Task 10-1 Apply lineweights to all your drawings	10-36
Task 10-2 Plot all your drawings full size	10-36
Task 10-3 Email a DWF file	10-36
<b>Appendix A – Engineering Graphics</b>	
A-1 Introduction	A-1
A-2 Engineering Graphics	A-2
A-3 Orthographic Projection	A-11
<b>Index</b>	Index-1

## CD Content

### 11. INTRODUCTION TO COMPUTERS - 50 pages

- 11-1 Computer Basics: Terms and Functions
- 11-2 Overview of the Windows User Interface
- 11-3 File Management Introduction
- Self-Exam & Review Questions*

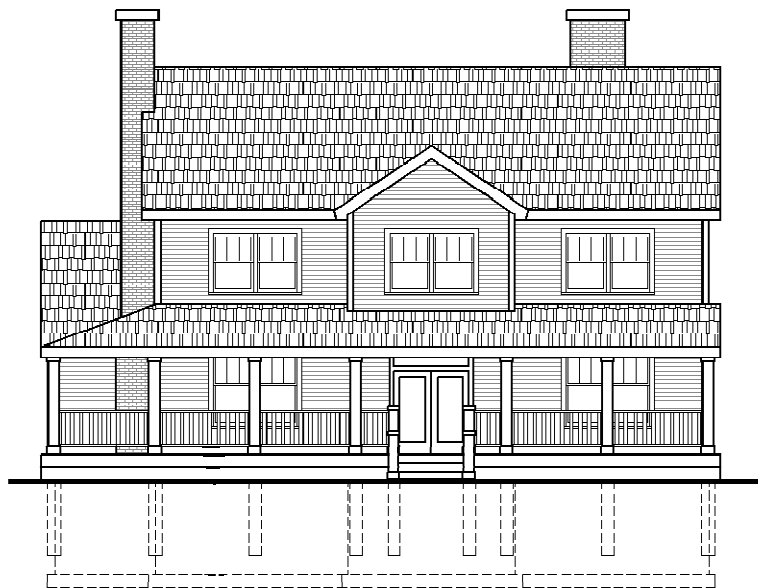
### 12. INTRODUCTION TO SKETCHUP - 82 pages

- 12-1 What is Google SketchUp used for?
- 12-2 Overview of the SketchUp User Interface
- 12-3 Open, Save and Close
- 12-4 Viewing SketchUp Models
- 12-5 Help System
- 12-6 The Basic Entities
- 12-7 Beginning with the Basics – 2D Sketching
- 12-8 3D Modeling
- 12-9 Adding Materials

### Appendix B – ROOF STUDY WORKBOOK – DRAFT EDITION - 89 pages

#### Videos

1. User Interface
2. Getting Started
3. Draw Tools
4. Modify Tools
5. Annotation
6. Floor Plans
7. Exterior Elevations
8. Sections
9. Interior Design
10. Site Plans
11. Schedules
12. SheetSets
13. Line Weights
14. Plotting



*Exterior Elevation created in Chapter 5, utilizing blocks, hatching, lineweights and line types.*