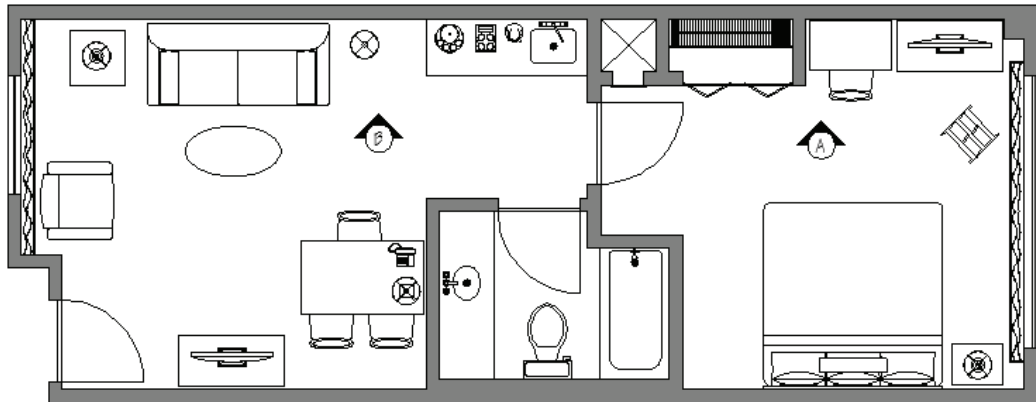


AutoCAD® 2012 for the Interior Designer



PLAN VIEW



ELEVATION B

SCALE: 1/4" = 1'



Dean Muccio

SDC
PUBLICATIONS

www.SDCpublications.com

Schroff Development Corporation

Table of Contents

Chapter 1	Getting Comfortable with AutoCAD®	
	Introduction to AutoCAD®	1-2
	Hand Drawing vs. AutoCAD®	1-3
	Clarification and Ground Rules	1-3
	AutoCAD® Screen	1-5
	Status Bar icons	1-7
	Toolbars	1-7
	Options – Screen Color & Right-Click	1-9
	Customizing Screen Background Color	1-9
	Customizing Right-Click	1-10
	UCS icon and View Cube	1-12
	AutoCAD® Help	1-13
	Using a Flash Drive	1-14
	Opening & Saving Drawings	1-16
	Using Pull-Down Menu	1-17
	Selecting New...	1-18
	Selecting Open	1-19
	Selecting Close	1-19
	Selecting Save	1-19
	Selecting Save As...	1-20
	File types	1-20
	Look in:/Save in: & Icons	1-20
Chapter 2	Setting-up and Intro to Using AutoCAD®	
	Units	2-2
	Drawing Limits	2-4
	Three Easy Commands to Help Get You Started	2-5
	Line	2-5
	Circle	2-7
	Erase	2-8
	Methods of Selecting Objects	2-9
	Selection Window (LEFT to RIGHT)	2-9
	Crossing Window (RIGHT to LEFT)	2-10
	Removing objects from the selection set	2-11
	Grips	2-11
	Zoom & Pan	2-12
	Zoom and Pan Using the Wheel Mouse	2-12
	Typing the Zoom Command	2-13

Chapter 3 Commands – Set 1: Drawing Construction - Getting Started

Rectangle	3-2
Explode	3-5
Offset	3-7
Construction Line	3-9
Construction Line Options	3-10
Horizontal and Vertical Construction Lines	3-10
Angled Construction Lines	3-10
Offset Option	3-10
Changing Object Limits	3-13
Trim	3-13
Extend	3-17
Object Snap – OSNAP	3-20
OSNAP icon	3-20
Using OSNAP Feature	3-22
Object Snaps – Override	3-23

Chapter 4 Hotel Suite Project – Tutorial 1

Create the basic shell of the suite	4-5
-------------------------------------	-----

Chapter 5 Commands – Set 2: Working with Your Drawing

Inquiry – Getting Information from Your Drawing	5-2
Measure Geometry	5-3
Distance	5-3
Radius	5-5
Angle	5-6
List	5-8
Fillet – Creating Round or Squared Corners	5-10
Setting the Fillet Radius	5-10
Trim Option	5-11
Selecting Objects to Fillet	5-11
Importance of Pick Location	5-12
Chamfer – Creating Beveled Edges	5-15
Setting the Chamfer Distance	5-15
Manipulating Existing Objects	5-18
Move	5-18
Copy	5-20
Rotate	5-21
Mirror	5-23
Array Commands	5-25
Rectangular Array	5-25
Count Option: Entering the Quantity of Rows and Columns	5-25
Spacing Option: Control Spacing	5-25
Polar Array	5-28

Chapter 6	Hotel Suite Project – Tutorial 2	
	Create the Bathroom Walls	6-3
	Create the Closet Walls	6-13
	Create the Doors and Windows	6-20
Chapter 7	Commands – Set 3: Laying-out Your Drawing for Printing	
	Model Space & Paper Space	7-2
	Model Space	7-2
	Paper Space	7-2
	Viewports	7-2
	Viewports Toolbar	7-3
	Re-Sizing a Viewport	7-6
	Access Model Space in Layout Tab	7-7
	Create and Modify Objects in a Layout Viewport	7-7
	Adjust the View in a Layout Viewport	7-8
	Lock the Scale of Layout Viewports	7-9
	Plotting from Paper Space	7-9
	Page Setup Manager	7-10
	Plotting/Printing Your Drawing	7-13
	Model & Layout Tabs	7-14
	Renaming Layout Tabs	7-14
	Adding a Layout Tab	7-15
	Deleting Layout Tabs	7-16
Chapter 8	Hotel Suite Project – Tutorial 3	
	Create a Layout for Plotting	8-3
	Create a Drawing Format	8-8
	Create a Template Drawing	8-10
Chapter 9	Commands – Set 4: Re-using and Organizing Your Drawing	
	Blocks – Treating Multiple Objects as One Object	9-2
	Making Blocks	9-2
	Inserting Blocks	9-5
	Design Center	9-6
	Using Design Center	9-7
	Bring Blocks into Your Drawing	9-7
	Bring Styles, etc. into Your Drawing	9-7
	Layers	9-8
	Layer Properties Manager	9-8
	Creating a New Layer	9-9
	Visibility of Layers	9-9
	Assigning a Color to the Layer	9-10
	Assigning a Linetype to the Layer	9-11
	Linetype Scale	9-12
	Current Layer	9-15

Properties	9-16
Changing Object Properties	9-16
Lineweight	9-17
Chapter 10	Hotel Suite Project – Tutorial 4
Placing Furniture/Fixtures on the Floor Plan	10-3
Adding Blocks to the Drawing	10-8
Adding Blocks to the Bedroom	10-9
Adding Blocks to the Bathroom	10-13
Adding Blocks to the Living Room	10-15
Creating Layers	10-18
Add Layers to Template	10-23
Chapter 11	Commands – Set 5: Annotating Your Drawing
Text	11-2
Text Style	11-2
Single Line Text	11-4
Multiline Text	11-6
Editing Text	11-7
Relocating Text	11-7
Special Characters	11-7
Scaling Text	11-8
Dimensions	11-9
Dimension Toolbar	11-9
Creating a Dimension Style	11-9
Using Dimensions	11-15
Linear Dimension	11-16
Aligned Dimension	11-17
Radial Dimension	11-18
Angular Dimension	11-19
Diameter Dimension	11-20
Modifying Existing Dimensions	11-23
Multileader	11-24
Multileader Toolbar	11-24
Creating a Multileader Style	11-24
Inserting a Multileader on Your Drawing	11-28
Chapter 12	Hotel Suite Project – Tutorial 5
Create an Elevation View	12-3
Adding Blocks to the Drawing	12-5
Adding Blocks to the Bedroom Elevation	12-5
Layout the Drawing	12-14
Annotating the Drawing	12-19

	Creating a View Symbol Block	12-20
	Add a Block and Text, Dimension, and Multileader Styles to Template	12-24
Chapter 13	Commands – Set 6: Creating and Editing Schedules	
	Tables – Creating a Schedule	13-2
	Creating a Table Style	13-3
	Table Title	13-3
	Table Header	13-5
	Table Data	13-5
	Inserting Tables on the Drawing	13-7
	Editing an Existing Table	13-9
Chapter 14	Commands – Set 7: Creating Curves and Rendering	
	Arc	14-2
	Ellipse	14-5
	Polyline	14-7
	Spline	14-10
	Hatch	14-14
	Section Views	14-19
	Rendering	14-20
	Gradient Hatch	14-20
Chapter 15	Miscellaneous – Techniques, Commands, and Options	
	Helpful Hints	15-2
	Finding the Center of a Rectangle	15-3
	Divide	15-4
	Break & Break at Point	15-6
	Stretch	15-7
	Scale	15-10
	Calculate Scale Factor Using QuickCac	15-11
	Cut (or Copy)/Paste – Using the Clipboard	15-13
	Changing Objects from Model Space to Paper Space	15-13
	Tracing Pictures	15-15
	Circle Options	15-20
	Define the Circle with 3 points	15-20
	Define the Circle with 2 points	15-21
	Tan Tan Radius	15-21
	Rectangle options	15-22
	Chamfered Corner Rectangle	15-22
	Filletted Corner Rectangle	15-23
	Offset options	15-23
	AutoCAD® Calculates Distance	15-23
	Pick Object First, then Specify Distance	15-24

Trim/extend options	15-24
Edge	15-24
Drafting Settings	15-24
Snap and Grid	15-25
Ortho and Polar	15-26
Dynamic Input	15-26

Index