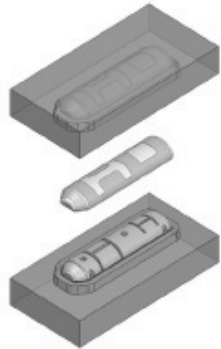


Inside:



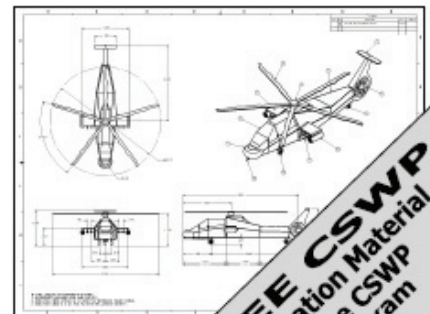
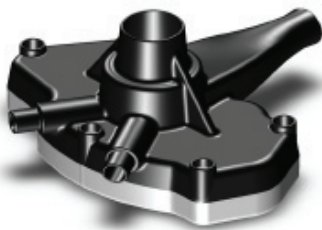
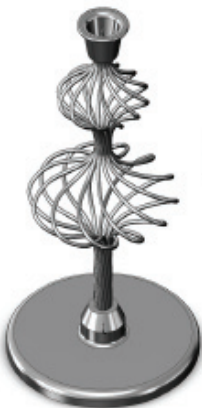
SolidWorks 2011

Part II - Advanced Techniques



Advanced Level Tutorials
Parts, Surfaces, SimulationXpress, Sheet Metal,
Top-Down Assemblies, Core/Cavity Molds & Repair Errors

Written by: Sr. Certified SolidWorks Instructor
Paul Tran, CSWP, CSWI



SDC
PUBLICATIONS

www.SDCpublications.com

Schroff Development Corporation

FREE CSWP
Preparation Material
For The CSWP
Core Exam

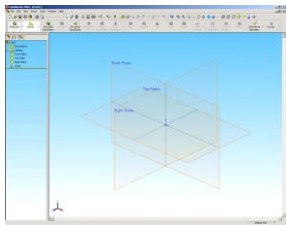


Table of Contents

Table of Contents

Copyrights Notices
Disclaimer
Trademarks

Introduction:



SolidWorks 2011 User Interface	XVI
The 3 references planes	XVII
The toolbars	XVIII
The system feedback symbols	XIX
The status bar	XX
2D sketch examples	XXI
3D feature examples	XXII

Advanced Modeling Topics

Chapter 1:



3D Sketch	1-1
Tools needed	1-2
Adding 3D lines	1-3
Using the reference axis indicator	1-4
Using the tab key	1-4
Adding dimensions	1-5
Adding the sketch fillets	1-6
Creating the Sweep profile	1-7
Making the swept feature	1-8
Questions for review	1-9
Exercise: Sweep with 3D Sketch	1-10
Exercise: 3D Sketch & Planes	1-11
Exercise: 3D Sketch & Composite Curves	1-17

Chapter 2:

Plane Creation	2-1
Tools needed	2-2
Sketching the base profile	2-3
Creating the flat surface	2-4
Creating a plane at angle	2-5
Showing a sketch	2-6

Table of Contents



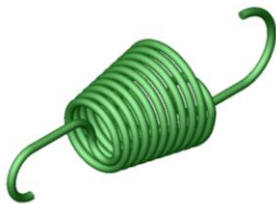
Creating a plane through lines/points	2-7
Creating a plane parallel at points	2-8
Creating a plane offset distance	2-10
Creating Plane Normal to curve	2-12
Creating a circular patterns	2-13
Filleting the edges	2-16
Questions for review	2-17
Exercise: Create new work planes	2-18

Chapter 3:



Advanced Modeling – 5/8” Spanner	3-1
Tools needed	3-2
Creating the open-end	3-3
Using min / max Arc conditions	3-4
Creating the transition body	3-4
Constructing a new work plane	3-6
Creating the close end	3-7
Making a hexagon cut	3-8
Adding a recess feature	3-9
Mirroring the recess	3-10
Adding fillets	3-11
Adding text on the recess	3-13
Extruding the text	3-14
Questions for review	3-17

Chapter 4:



Sweep w/ Composite Curve – Helical Extension Spring	4-1
Tools needed	4-2
Creating the Sweep path	4-3
Defining the Helix	4-3
Adding other Hook features	4-5
Creating a new plane	4-6
Combining sketches using Composite Curve	4-8
Creating Sweep profile	4-9
Creating the Base Sweep	4-9
Other Spring examples	4-10
Questions for review	4-11
Exercise: Circular Spring – Expanded	4-12
Exercise: Using Curve Through Reference Points	4-27
Sweep – Multi-Pitch Spring, closed ends	4-15
Tools needed	4-16
Creating new work planes	4-17
Making the first helix	4-17
Making the second helix	4-18

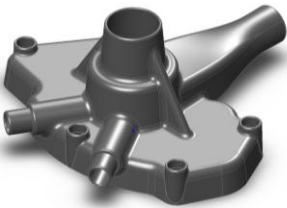
Table of Contents



Making the third helix	4-19
Making the fourth helix	4-20
Combining the helixes	4-21
Creating the sweep profile	4-23
Sweeping profile along path	4-24
Questions for review	4-25
Exercise: Projected Curve & Composite Curve	4-26

Chapter 5:

Advanced Modeling – Sweep Vs. Loft – Water Pump	5-1
Tools needed	5-2
Understanding the draft options	5-3
Creating the base	5-4
Creating the upper inlet port - revolve	5-5
Adding constant fillets	5-6
Creating the new work planes	5-7
Creating the outlet port - Loft	5-10
Adding the mounting bosses	5-11
Creating the rear inlet port	5-12
Adding face Fillets	5-13
Mirroring features	5-15
Shelling the part	5-16
Adding the ribs	5-17
Mirroring the ribs	5-18
Removing the sharp edges	5-19



Chapter 6:

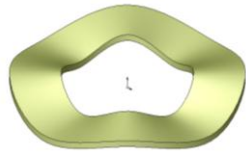
Lofts – Water Meter Housing	6-1
Tools needed	6-2
Constructing the body	6-3
Creating an offset distance plane	6-5
Creating loft profiles / features	6-5
Constructing the Inlet / outlet profiles	6-6
Using split entities	6-7
Re-using the previous sketch	6-8
Creating the solid loft feature	6-11
Using the shell command	6-13
Adding the left / right brackets	6-14
Adding the seal ring	6-15
Adding chamfers	6-18
Questions for review	6-19
Exercise: Loft	6-20



Chapter 7:

Loft with Guide Curves – Waved Washer	7-1
Tools needed	7-2

Table of Contents



Adding the construction geometries	7-3
Creating a offset distance plane	7-4
Creating a derived sketches	7-5
Creating a curve through reference points	7-5
Constructing the loft sections	7-7
Creating the derived sketches	7-7
Creating the loft feature	7-10
Showing / hiding sketches	7-11
Questions for review	7-12
Exercise: V-Shape – Stent Creation	7-13

Chapter 8:



Surfaces – Lofted Surface	8-1
Tools needed	8-2
Creating offset distance plane	8-3
Constructing the loft profiles	8-3
Creating the loft surface	8-6
Splitting surfaces	8-7
Deleting surfaces	8-8
Thickening surfaces	8-9
Calculating the angle between faces	8-11
Adding a full round fillet	8-12
Sketching / extruding the slot contours	8-14
Questions for review	8-17

Lofted Surface – Remote Control Casing



Lofted Surface – Remote Control Casing	8-19
Tools needed	8-20
Creating offset distance planes	8-21
Sketching the loft sections	8-22
Recognizing the order of the loft selection	8-23
Creating the loft surface	8-24
Adding revolved surface	8-25
Copying / moving surfaces	8-26
Trimming surfaces	8-27
Hiding surfaces	8-27
Filling surfaces	8-28
Knitting surfaces	8-32
Adding fillets	8-32
Thickening surfaces	8-34
Splitting the model	8-35
Creating the lower half	8-36
Creating the upper half	8-37
Questions for review	8-39

Table of Contents

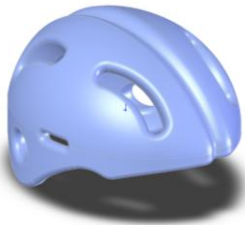
Exercise: Lofted Surface 8-40

Chapter 9:



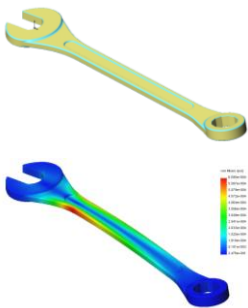
Advanced Surfaces – Surface Offset_Ruled	9-1
Tools needed	9-2
Using offset and rule surface	9-3
Creating the base loft	9-4
Using the splitting lines	9-5
Using offset surfaces	9-6
Using ruled surface	9-7
Using knit surfaces	9-8
Creating a cut with surface	9-10
Exercise: Using Deform	9-13
Exercise: Advanced modeling with surfaces	9-15
Exercise: Advanced surfacing techniques	9-17

Chapter 10:



Surfaces vs. Solid Modeling -- Helmet	10-1
Tools needed	10-2
Constructing the body of Helmet	10-3
Sketching the sweep profile	10-4
Sketching the sweep path	10-5
Knitting the surfaces bodies	10-6
Thickening the surface – Knit	10-7
Creating a revolve cut feature	10-9
Creating the Cut-out slot with draft	10-10
Adding fillets	10-13
Exercise: Turbine Blades	10-15
Exercise: Advanced Sweep – Candle Holder	10-16
L3 – Final Exam	10-23

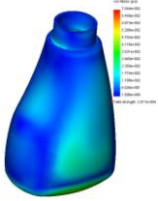
Chapter 11:



SimulationXpress – 5/8” Spanner	11-1
Tools needed	11-2
Starting SimulationXpress	11-3
Setting up units	11-3
Adding a fixture	11-3
Adding load	11-6
Selecting material	11-7
Analyzing the model	11-8
Reading the Results	11-9
Stress distribution	11-9
Displacement distribution	11-10
Factor of Safety (FOS)	11-10
HTML report	11-11

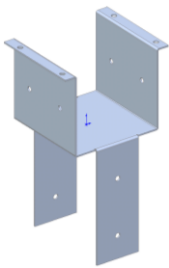
Table of Contents

eDrawings	11-15
Questions for review	11-19
Exercise: Apply load	11-20
Exercise: Apply pressure	11-21

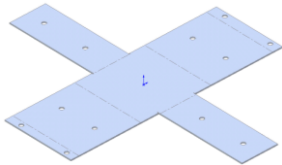


Sheet Metal Topics

Chapter 12:



Sheet Metal – Post Cap	12-1
Tools needed	12-2
Making the base sketch	12-3
Using the base Flange	12-3
Creating an edge Flange	12-4
Editing an edge Flange	12-5
Creating a sketch Bend	12-7
Adding holes in sheet metal parts	12-11
Flattening a pattern	12-13
Questions for review	12-14



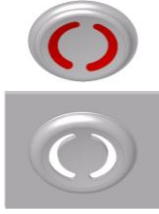
Sheet Metal - Vents	12-15
Tools needed	12-16
Creating the base sketch	12-17
Extruding with base-flange	12-18
Using the miter flange options	12-19
Creating a flat patterns	12-21
Creating a forming tool	12-22
Revolve the form body	12-25
The position sketch	12-27
Save the forming tools	12-28
Applying the forming tools onto sheet metal part	12-30
Position the forming tool	12-31
Adding other sheet metal features	12-33
Creating a Linear pattern of the forming tools	12-34
Creating an axis	12-35
Creating Circular patterns	12-35
Questions for review	12-37



Chapter 13:

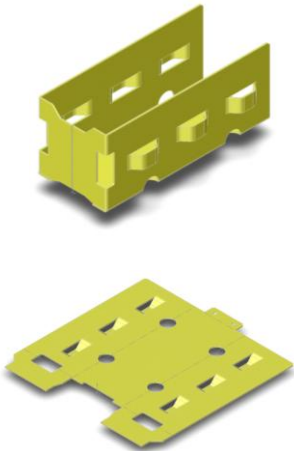
Forming Tools – Button w/Slots	13-1
Tools needed	13-2
Sketching the base	13-3
Revolving the base	13-4

Table of Contents



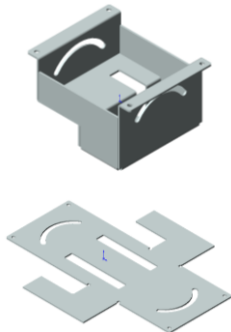
Adding slots	13-5
Adding split lines	13-7
Defining the stopping & removing faces	13-9
Saving in the design library	13-10
Questions for review	13-12

Sheet Metal – Mounting Tray 13-13



Tools needed	13-14
Making the base flange	13-15
Adding an edge flange	13-16
Adding sheet metal cuts	13-17
Unfolding a sheet metal part	13-18
Folding the sheet metal part	13-20
Accessing the design library	13-23
Adding the bridge lance	13-24
Creating a linear pattern	13-26
Mirroring body	13-27
Sheet metal chamfers	13-30
Creating a flat pattern	13-31
Questions for review	13-32

Chapter 14:



Sheet Metal Conversions	14-1
Tools needed	14-2
Importing an IGES file	14-3
Using the rip command	14-4
Applying sheet metal parameters	14-5
Adding fillets	14-6
Crating a flat pattern	14-7
Questions for review	14-8
Exercise: Using STEP file & Smart Fasteners	14-9

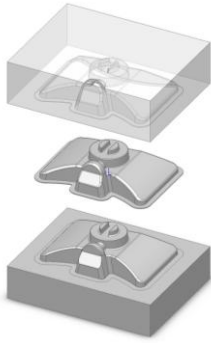
Top-Down Assembly Topics

Chapter 15:

Top-Down Assembly – Core & Cavity – Assembly Level 15-1

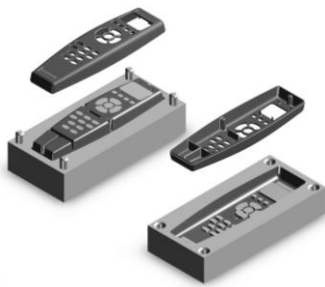
Tools needed	15-2
Opening the existing part	15-3
Applying scale to parts	15-3
Creating Radiate surfaces	15-4
Adding parts into an assembly document	15-5
Creating the core part	15-6

Table of Contents



Knitting the surfaces	15-7
Hiding component	15-8
Extruding with up to surface	15-9
Editing part vs. edit assembly modes	15-10
Creating the cavity part	15-11
Creating an assembly exploded views	15-17
Animating the explode / collapse configurations	15-20
Questions for review	15-22

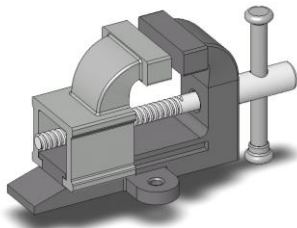
Tooling Design – Part Level 15-23



Tools needed	15-24
Opening the IGES file	15-25
Adding a Parting Lines	15-26
Using the shut off Surfaces command	15-27
Using Parting Surfaces	15-28
Using Tooling Splits	15-30
Saving the 2 halves	15-32
Separating the 2 halves	15-33
Questions for review	15-35

Chapter 16:

Top-Down Assembly – Miniature Vise 16-1



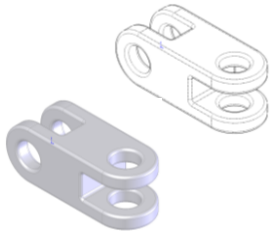
Tools needed	16-2
Adding side flanges	16-5
Offsetting distance plane	16-7
Creating loft profiles and guide curves	16-8
Creating a loft with guide curves	16-11
Inserting the base part into an assembly	16-15
Understanding the inplace mates	16-15
Offsetting existing geometry	16-16
Creating a loft with guide curve	16-20
Using loft with guide curve in an assembly	16-22
Extruding with up to surface option	16-25
Creating Internal threads	16-27
Making an assembly section view	16-30
Adding sub-components	16-31
Questions for review	16-33
Exercise: Lips & Grooves for Plastic Parts	16-35
Exercise: Mounting Bosses for Plastic Parts	16-39

Chapter 17:

External References & Repair Errors – Double Link 17-1

Tools needed	17-2
Breaking all external references	17-3
Understanding External Reference symbols	17-4

Table of Contents



Repairing Sketch level	17-5
Repairing / replacing relations and dimensions	17-6
Questions for review	17-7
Exercise: Repair Errors	17-9
Level 4 Final Exam	17-17

Student Testimonials:

Some of the actual student testimonials after completing the training courses from the Author. All documents are filed at local SolidWorks resellers.

CSWP Core Preparation Practice

Preparation materials for the CSWP-Core examination	18-1
Part modeling and modifications	18-2
Configurations and design tables	18-20
Bottom up assembly	18-26

Student Testimonials:

Some of the actual student testimonials after completing the training courses from the Author. All documents are filed at local SolidWorks resellers.

SolidWorks 2011 Quick-Guides:

Quick Reference Guide to SolidWorks 2011 Command Icons and Toolbars.

