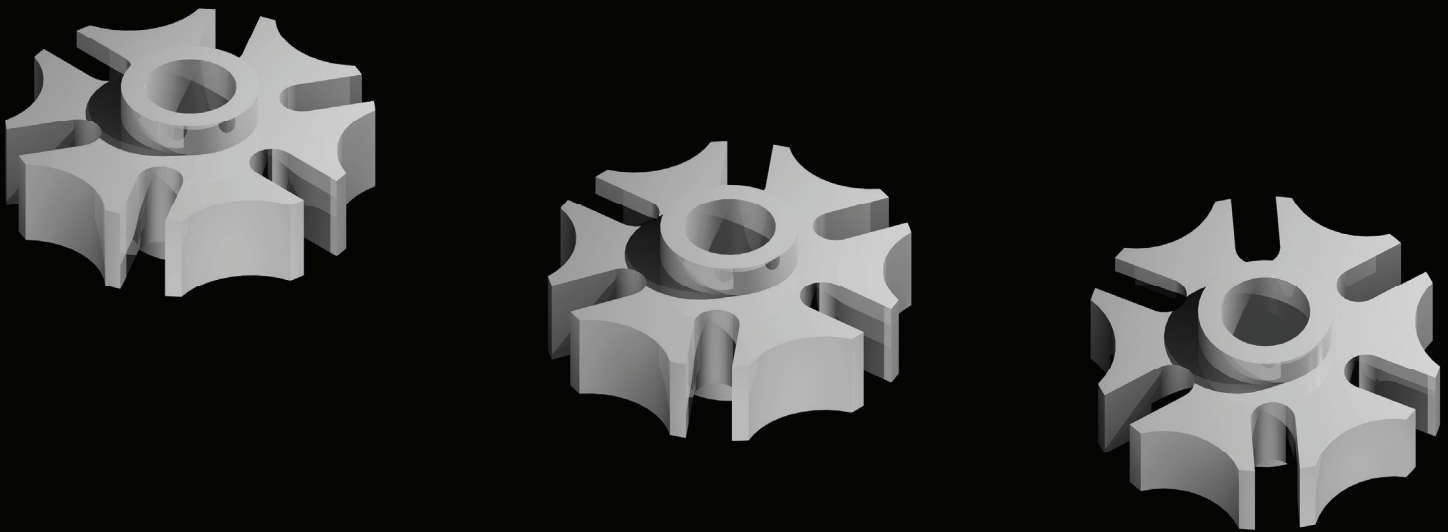


Tutorial Guide to
AutoCAD[®] 2011

2D Drawing • 3D Modeling



SHAWNA LOCKHART

SDC
PUBLICATIONS

www.SDCpublications.com

Schroff Development Corporation

Using Snap Mode	14
Drafting Settings	15
Using Line	16
Using Absolute Coordinates	17
Drawing Using Grid and Snap	17
Using Last Point	18
Using Relative X- and Y-Coordinates	19
Using Polar Coordinates	19
Getting Help	22
Using Save	23
Using Erase	24
Erasing with Window or Crossing	24
Using Undo	27
Using Redo	29
Drawing a Plot Plan	29
Setting the Units	30
Sizing Your Drawing	32
Using Limits	33
Using Rectangle	35
Drawing Circles	36
Adding Text	37
Copying Text	38
In Place Text Editing	39
Moving and Rotating Text	40
Setting the Text Style	40
Setting a Style Current	44
Using Mtext	45
Spell Checking Your Drawing	48
Saving Your Drawing	49
Transferring Files	49
Exercises	51

2 Basic Construction Techniques 55

Introduction	55
Starting	55
Opening an Existing Drawing	55
Objectives	55
Saving as a New File	57
Using Layers	58
Current Layer	58
Controlling Layers	59
Controlling Colors	60
Layer Visibility	61
Freezing Layers	62
Locking Layers	62
Making Object's Layer Current	63
Using Layer	64
Using Object Snap	67
Using Arc	69
Using Zoom	75
Using the Scroll Wheel to Zoom	79
Using the Aerial Viewer	79
Using Pan Realtime	80
Circle Tangent Tangent Radius	83
Using Ellipse	84
Exercises	87

3 Basic Editing and Plotting Techniques 91

Introduction	91
Starting	91
Starting from a Template Drawing	91
Objectives	91
Using Trim	94
Using Offset	97

Changing Object Properties	99	Object Tracking	148
Using the Properties Panel	100	Using Break	148
The Properties Palette	100	Using Extend	150
Using Fillet	102	Using Rotate	151
Using Chamfer	103	Using Move	152
Using Polyline	105	Methods of Selecting Objects	152
Using Spline	107	Select Similar	154
Getting Information about Your Drawing	109	Using Selection Filters	155
Locating Points	110	Using Quick Select	156
Measuring Geometry	111	Creating the Geneva Cam	158
Area	111	Using Construction Line (Xline)	159
Using Multilines	112	Using Mirror	162
The Plot Dialog Box	115	Using Array	163
Exercises	122	Making Changes using Grips	165
		Noun/Verb Selection	169
		Using 2D Parametric Constraints	170
		Exercises	179
4 Geometric Constructions	127		
Introduction	127		
Starting	127		
Setting the Units and Limits	127		
Objectives	127		
Drawing the Wrench	128		
Using Copy Object	128		
Effective Use of Layers	130		
Changing Properties	132		
Setting the Global Linetype Scaling Factor	133		
Changing an Object's Linetype Scale	134		
Using Polygon	135		
Using Polar Tracking	137		
Using Object Snaps	140		
Showing a Floating Toolbar	140		
Object Snap Overrides	141		
More Object Snaps	146		
		5 Template Drawings and More Plotting	183
		Introduction	183
		Starting	183
		Using a Standard Template	183
		Objectives	183
		Paper Space Layouts	185
		Printer Area	186
		Viewport	186
		Switching to Model Space	188
		Inserting an Existing Drawing	188
		Showing the Drawing in the Layout	190
		Setting the Viewport Zoom Scale	191
		Using Pan to Position the Drawing	194
		Locking the Viewport Scale	195

Creating a Second Floating Viewport	195	Drawing Hidden Lines	244
Making a Viewport Active	197	Line Precedence	246
Attributes and Fields	199	Slanted Surfaces	247
Using Irregularly Shaped Viewports	201	Top-View to Side-View Projection	248
Plotting from Paper Space	203	Drawing the Miter Line	249
Sheet Sets	204	Using Object Snap Tracking	249
Creating a Template Drawing	211	Sizing and Positioning the Drawing	253
Creating Default Layers	212	Locking the Viewport Scale	254
Using the Drafting Settings Dialog Box	219	Drawing Holes	254
Selecting the Default Text Font	220	Drawing Centerlines and Centermarks	255
Setting the Viewres Default	221	Breaking the Centerline	258
Switching to a Paper Space Layout	222	Setting the Global Linetype Scaling Factor	260
Adding a Title Block and Text to Paper Space	223	Projecting Slanted Surfaces on Cylinders	261
Using Divide	224	Exercises	264
Adding the Titles	226		
Beginning a New Drawing from a Template Drawing	228	7 Dimensioning	269
Changing the Title Block Text	228	Introduction	269
Exercises	230	Terminology and Conventions	269
		Objectives	269
6 2D Orthographic Drawings	235	Semiautomatic Dimensioning	270
Introduction	235	Starting	271
The Front, Top, and Right-Side Orthographic Views	235	Dimensioning a Shape	271
Objectives	235	Using the DIM Layer	272
View Location	236	Dimension Standards	272
Starting	236	Associating Dimensions	272
Switching to Model Space	238	Annotation Scaling	273
Deciding the Model Space Limits	238	The Dimension Panel	274
Viewing the Model Space Limits	239	Using Dimension Styles	274
Using Ortho	239	Creating a Named Dimension Style	275
Drawing Construction Lines	239	Scaling Dimension Features	276
Hidden Lines	243	Lines tab	277
		Symbols and Arrows tab	278

Text tab	280	Starting	320
Fit Tab	281	Automatic Bilateral Tolerances	321
Setting the Current Style	287	Using Limit Tolerances	328
Checking Your Dimension Settings	288	Creating Feature Control Frames	330
Associative Dimensioning	289	Using Leader with Tolerances	334
Adding Dimensions to the Layout or the Model	289	Creating Datum Flags	336
Adding Linear Dimensions	290	Creating an Annotative Dimension Style	337
Creating a Diameter Dimension	291	Exercises	339
Baseline Dimensioning	293		
Using Xplode	295	9 Section and Auxiliary Views	341
Adding Text with Special Characters	296	Introduction	341
Using Quick Dimension	297	Section Views	341
Saving As a Template	299	Objectives	341
Dimensioning the Adapter	299	Starting	343
Using Continue Dimension	300	Creating 2D Section Views	343
Angular Dimensions	301	Cutting Plane Lines	344
Centering the Views	303	Changing Hidden Lines to Visible	348
Adding the Tolerance Note	303	Using Hatch	349
Updating Associative Dimensions	304	Adding the Hatch Pattern	355
Using Stretch	304	Creating the Side Section View	356
Modifying Dimensions	305	Solid Fill	359
Updating a Dimension Style	306	Using Draworder	360
Changing the Drawing Scale	307	Changing Associative Hatches	361
The Annotation Property	309	Auxiliary Views	364
Synch the Annotative and Viewport Scales	310	Drawing Auxiliary Views Using 2D	364
Creating an Annotative Text Style	311	Aligning the UCS with the Angled Surface	366
Exercises	314	Adding Visual Reference Lines	370
		Linetype Conventions	370
8 Advanced Dimensioning	319	Curved Surfaces	371
Tolerance	319	Rotating the Snap	372
Objectives	319	Drawing the Ellipse	376
Tolerance Formats	320	Exercises	378

10 **Blocks, DesignCenter, and Tool Palettes 383**

Introduction	383
Objectives	383
Starting	384
Using the Block Command	384
Inserting a Block	387
Using Explode	389
Using Write Block	389
Using DesignCenter and Tool Palettes	391
Drawing the Half-Adder Circuit	396
Using Donut	397
Freezing the TEXT Layer	398
Creating Object Groups	398
Creating Custom Interfaces	401
Using Special Characters in Programmed Commands	405
Exercises	410

11 **Introduction to Solid & Surface Modeling 415**

Introduction	415
Objectives	415
Starting	416
The 3D Modeling Workspace	416
3D Coordinate Systems	417
Creating 3D Objects	417
Setting the Viewpoint	418
User Coordinate Systems	423
The UCS Icon	423
Using Layers	425
Creating Multiple Viewports	425
Viewports Using Different UCSs	429
Creating Cylinders	431
Selection Cycling	431

Setting Isolines	432
Building Complex Solid Models	433
Creating Wedges	435
Creating Cones	436
Creating User Coordinate Systems	437
Plotting Solid Models from Paper Space	440
Saving Your Multiview Setup as a Template	442
Creating Solid Models with Extrude and Revolve	442
Region Modeling	444
Extruding a Shape	445
Creating Solids by Revolution	447
Aligning the Views	448
Using the Boolean Operator Intersection	449
Creating Surface Models	454
Using Loft	455
Creating a Patch (SURFPATCH)	456
Creating Mesh Models	457
Creating a Ruled Mesh	459
Controlling Mesh Density	459
Creating an Edge Mesh	460
Using the Steering Wheel	461
Creating 3D Mesh	463
Exercises	465

12 **Changing and Plotting Solid Models 471**

Introduction	471
Starting	471
Objectives	471
Using Fillet on Solids	472
Using Chamfer on Solids	472
Using Slice	473

Creating the Hole	482		
Plotting with Hidden Lines	484		
Controlling the Generated Layers	485		
Setting the Linetypes and Colors for Generated Layers	486		
Adding the Centerlines	488		
Using Freeze/Thaw in Current Viewport	489		
Exercises	491		
13	Creating Assembly Drawings from Solid Models	495	
Introduction	495		
Attaching Solid Models	495		
Objectives	495		
Starting	496		
Using External References	497		
Layers and External References	499		
Inserting the Solid Part Drawings	500		
Checking for Interference	504		
Determining Mass Properties (MASSPROP)	505		
Creating an Exploded Isometric View	506		
Creating a Dynamic Block for the Ball Tags	508		
Defining Attributes	511		
Defining the Parameters	515		
Defining the Actions	516		
Inserting the Ball Tags	518		
Changing an Attribute Value	520		
Changing an Externally Referenced Drawing	521		
Creating the Parts List	523		
Extracting Attribute Information	523		
Exercises	529		
14	Solid Modeling for Section and Auxiliary Views	535	
Introduction	535		
Creating Sections from a Solid Model	535		
Objectives	535		
Using Solview and Soldraw	536		
Setup Profile	538		
Using Section Plane	540		
Using Live Section	541		
Section Settings	542		
Creating an Auxiliary View from a 3D Model	543		
Orienting the View	546		
3 Point UCS	546		
Using Plan	547		
Using 3D Dynamic View	548		
Using Solview	550		
Exercises	552		
15	Rendering	557	
Introduction	557		
Starting	557		
Objectives	557		
The Render Panel	558		
Advanced Render Settings	563		
Adding Lights	569		
Choosing Materials	573		
Creating a New Material	575		
Adjusting Mapping	578		
Adding Backgrounds	579		
Rendering to a File	580		
Using Sun Properties	581		
Geographic Location	581		

Exporting AutoCAD Files	586
Drawing Web Format	587
Exercises	588

Glossary	595
-----------------	------------

AutoCAD® Command Summary	611
---------------------------------	------------

Index	653
--------------	------------