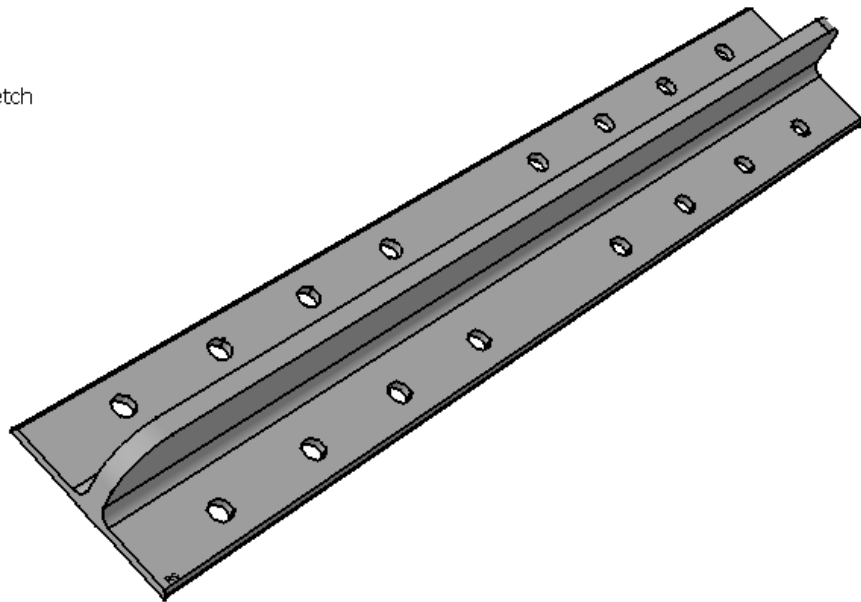
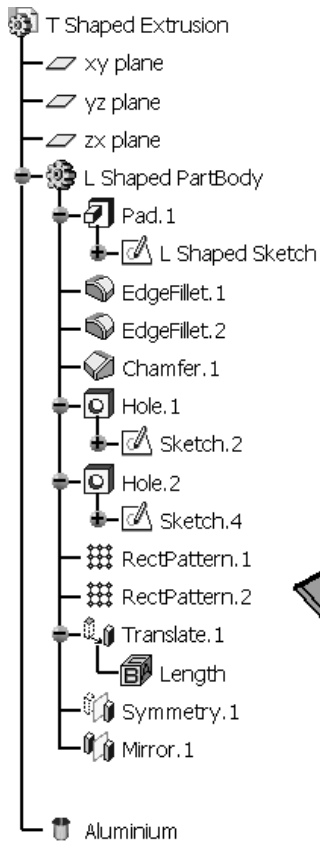


# CATIA V5 Workbook

Release 19



By:

**Richard Cozzens**

Southern Utah University

**SDC**  
PUBLICATIONS

Schroff Development Corporation

[www.schroff.com](http://www.schroff.com)

# TABLE OF CONTENTS

Preface	i
Workbook Revisions	i
About the Author	ii
Acknowledgements	iii
Download Site	iv
Online Supplement	iv
Blackboard Course Module (for CATIA Instructors)	iv
Related Sites	iv
Table of Contents	v
Workbook Overview	O-1

## Lesson 1

## Introduction to CATIA V5

Introduction .....	1.1
Objectives .....	1.2
The CATIA V5 Acronym .....	1.2
How to Use this Workbook .....	1.2
A Brief History of CATIA .....	1.3
CATIA V5 Configuration .....	1.4
CATIA V5 Platforms .....	1.5
CATIA V5 Application Tools .....	1.6
CATIA V5 Workbenches .....	1.7
CATIA V5 Documents .....	1.11
Running CATIA V5 on Windows .....	1.12
Contextual Menus .....	1.12
Drag and Drop .....	1.13
Summary .....	1.13
Review Questions .....	1.14
Practice Exercises .....	1.16

## Lesson 2

## Navigating the CATIA V5 Environment

Introduction .....	2.1
Objectives .....	2.1
CATIA V5 Standard Screen Layout .....	2.2
1 The Start Menu .....	2.3
2 The Current Active CATIA V5 Document .....	2.4
3 The Standard Windows Toolbar .....	2.4
4 The Specification Tree .....	2.16
5 The Compass .....	2.22
6 The Select Tool and Toolbar .....	2.22

7 The Current Workbench .....	2.23
8 Window Maximize and Minimize .....	2.25
9 Plane Representation .....	2.25
10 The Current Workbench Tools and Toolbars .....	2.26
11 Axis Orientation .....	2.28
12 The Tools Toolbar .....	2.29
13 The Product Knowledge Template Toolbar .....	2.30
14 The Analysis Toolbar .....	2.30
15 The View Toolbar .....	2.31
16 The CATIA V5 Standard Toolbar .....	2.34
17 The Prompt Zone .....	2.35
18 The Knowledge Toolbar .....	2.35
19 The Apply Material Tool .....	2.36
20 The Measure Tool .....	2.36
21 The Power Input Mode .....	2.37
22 The Double Chevron Symbols .....	2.37
Summary .....	2.37
Review Questions .....	2.38
Practice Exercises .....	2.40

### Lesson 3

### Sketcher Workbench

Introduction .....	3.1
Objectives .....	3.2
Sketcher Workbench Toolbars .....	3.2
Steps to Creating a Simple Part Using the Sketcher Workbench .....	3.10
1 Start CATIA V5 .....	3.11
2 Select the Sketcher Workbench .....	3.12
3 Specify a Working Plane .....	3.15
4 Entering the Sketcher Workbench .....	3.16
5 Customizing the Grid .....	3.17
6 Creating Geometry Using the Profile Tools .....	3.20
7 The Starting Point .....	3.20
8 Creating Line 1 .....	3.22
9 Creating Line 2 .....	3.24
10 Creating Line 3 .....	3.24
11 Creating Lines 4, 5 and 6 Using the Profile Tool .....	3.25
12 Breaking Line 6 .....	3.26
13 Deleting the Broken Line .....	3.26
14 Completing the Profile Using the Trim Tool .....	3.27
15 Modifying the Profile Using the Corner Tool .....	3.27
16 Modifying the Profile Using the Chamfer Tool .....	3.29
17 Anchoring the Profile Using the Anchor Tool .....	3.30
18 Constraining the Profile .....	3.31
19 Modifying the Constraints .....	3.36
20 Over Constraining the Profile ... Not a Good Thing .....	3.37

21 Exiting the Sketcher Workbench .....	3.38
22 Extruding the Newly Created Profile Using the Pad Tool .....	3.39
23 Saving the Newly Created “L Shaped Extrusion” .....	3.41
24 Exiting CATIA V5.....	3.42
Summary .....	3.42
Review Questions .....	3.43
Practice Exercises .....	3.45

<b>Lesson 4</b>	<b>Part Design Workbench</b>
-----------------	------------------------------

Introduction.....	4.1
Objectives .....	4.1
Part Design Workbench Toolbars .....	4.2
Steps to Extruding a Profile Using the Part Design Workbench .....	4.7
1 Start CATIA V5 .....	4.7
2 Select the Part Design Workbench .....	4.8
3 Open the “L Shaped Extrusion.CATPart” Document .....	4.8
4 Review the “L Shaped Extrusion.CATPart” .....	4.8
5 Extruding the Sketcher Profile Using the Pad Tool .....	4.8
6 Creating a Fillet .....	4.9
7 Creating a Fillet on the Back Edge of the “L Shaped Extrusion” .....	4.11
8 Creating a Chamfer .....	4.12
9 Creating Holes .....	4.15
10 Creating a Pattern of Holes .....	4.18
11 Modifying the Width of the Base Leg .....	4.22
12 Translating the “L Shaped Extrusion” .....	4.26
13 Rotating the “L Shaped Extrusion” .....	4.27
14 Creating a Symmetrical “L Shaped Extrusion” .....	4.31
15 Mirroring the “L Shaped Extrusion” .....	4.32
16 Scaling the “T Shaped Extrusion” .....	4.34
17 Applying Constraints in the Part Design Workbench .....	4.35
18 Applying Material to the “T Shaped Extrusion” .....	4.40
19 Managing the Specification Tree .....	4.42
20 Customizing the Specification Tree .....	4.43
21 Reviewing the Design Process Using the Specification Tree .....	4.45
22 Save the Completed “T Shaped Extrusion” Before It Gets Away .....	4.47
23 Exiting CATIA V5 .....	4.47
Summary .....	4.47
Review Questions .....	4.48
Practice Exercises .....	4.50

<b>Lesson 5</b>	<b>Drafting Workbench</b>
-----------------	---------------------------

Introduction .....	5.1
Objectives .....	5.1
Drafting Workbench Toolbars .....	5.1
Steps to Creating Sheets and Views .....	5.5
1 Start CATIA V5 .....	5.5
2 Select the Part Design Workbench .....	5.5
3 Open the “T Shaped Extrusion.CATPart” Document .....	5.5
4 Select the Drafting Workbench .....	5.6
5 The Drafting Workbench Layout .....	5.9
6 Customizing the Default Values .....	5.10
7 Creating a New Sheet .....	5.13
8 Creating a New View .....	5.14
9 Modifying an Existing View .....	5.20
10 Creating a Detail View .....	5.23
11 Creating a Section View .....	5.27
12 Creating an Auxiliary View .....	5.31
13 Creating a Clipped View .....	5.33
14 Organizing Your Drawing .....	5.34
15 Saving Your Newly Created Drawing .....	5.36
16 Printing the Newly Created Sheets .....	5.36
Summary .....	5.37
Review Questions .....	5.38
Practice Exercises .....	5.40

<b>Lesson 6</b>	<b>Drafting Workbench</b>
-----------------	---------------------------

Introduction .....	6.1
Objectives .....	6.1
Drafting Workbench Toolbars .....	6.2
Adding Text and Dimensions to Drawings .....	6.7
1 Start CATIA V5 .....	6.8
2 Select the Drafting Workbench .....	6.8
3 Open the “T Shaped Extrusion.CATDrawing” Document .....	6.8
4 The Drafting Workbench Layout .....	6.8
5 Customizing the Default Values .....	6.9
6 Creating and Modifying Text .....	6.9
7 Creating and Modifying Leaders .....	6.16
8 Creating and Modifying Dimensions .....	6.17
9 Creating a Diameter Dimension .....	6.21
10 Creating a Angle Dimension.....	6.23
11 Generating Dimensions.....	6.23
12 Finish Dimensioning Sheet 2.....	6.24
13 Creating a Border/Title Block .....	6.25
14 Inserting Bill of Materials into the Title Block .....	6.27

15 Inserting Picture Documents into the Title Block .....	6.27
16 Saving Your Updated Drawing .....	6.29
17 Printing the Finished Drawings .....	6.29
Summary .....	6.30
Review Questions .....	6.31
Practice Exercises.....	6.33

<b>Lesson 7</b>	<b>Complex and Multiple Sketch Parts</b>
-----------------	--

Introduction .....	7.1
Objectives .....	7.2
Tools Used For Complex and Multiple Sketch Parts .....	7.2
Steps to Creating Complex and Multiple Sketch Parts .....	7.6
1 Creating the “Swivel” Using Multiple Sketches .....	7.6
2 Creating the “Top U-Joint” Using Multiple Sketches .....	7.13
3 Modifying the “Top U-Joint” .....	7.24
4 Creating the “Bottom U-Joint” Using Boolean Geometry .....	7.25
Summary .....	7.35
Review Questions .....	7.36
Practice Exercises .....	7.38

<b>Lesson 8</b>	<b>Assembly Design Workbench</b>
-----------------	----------------------------------

Introduction .....	8.1
Objectives .....	8.2
Assembly Design Workbench Toolbars .....	8.2
Steps to Creating an Assembly .....	8.7
1 Entering the Assembly Design Workbench .....	8.7
2 Inserting Components into the Assembly Design Workbench .....	8.8
3 Moving Components in the Assembly Design Workbench Using the Manipulation Tool .....	8.9
4 Moving Components in the Assembly Design Workbench Using the Compass .....	8.11
5 Assembling Existing Components .....	8.12
6 Modifying a Component in the Assembly Design Workbench .....	8.17
7 Creating a Bill of Materials .....	8.21
8 Analyzing/Modifying Assembly Constraints .....	8.23
9 Clash Detection .....	8.25
10 Measuring Tools .....	8.25
11 Assembly Dependencies .....	8.27
12 Mechanical Structure .....	8.27
13 Adding Annotation .....	8.28
14 Saving a Specific View .....	8.28
15 Exploding the Assembly .....	8.30
16 Assembly Animation with Respect to Constraints .....	8.31

17 Saving the Newly Created Assembly .....	8.32
Summary .....	8.32
Review Questions .....	8.33
Practice Exercises .....	8.35

<b>Lesson 9</b>	<b>Generative Shape Design Workbench</b>
-----------------	--

Introduction .....	9.1
Objectives .....	9.1
Generative Shape Design Workbench Toolbars .....	9.1
Steps to Creating a Simple Wireframe Part .....	9.9
1 Select the Generative Shape Design Workbench .....	9.9
2 Creating a Local Axis System .....	9.11
3 Creating Points .....	9.18
4 Creating Lines Using the Point-Point Method .....	9.20
5 Creating Line 3 Using the Point-Direction Method .....	9.21
6 Creating Line 8 Using the Same Point-Direction Method .....	9.23
7 Completing the Wireframe by Creating Lines 9, 10 and 11 Using the Point-Direction Method .....	9.25
8 Creating Planes .....	9.26
9 Creating Corners .....	9.28
10 Using the Split Tool .....	9.30
11 Adding an Elliptical Wireframe Using the Sketcher Workbench .....	9.32
12 Applying a Surface to the Wireframe Using the Fill Tool .....	9.34
13 Creating a Fillet Between Two Surfaces .....	9.36
14 Creating the Elliptical Cutout Using the Split Tool .....	9.38
15 Creating Surface Thickness Using the Thick Surface Tool .....	9.39
16 Creating a Helix .....	9.41
Summary .....	9.44
Review Questions .....	9.45
Practice Exercises .....	9.46

<b>Lesson 10</b>	<b>Generative Shape Design Workbench</b>
------------------	--

Creating Surface Geometry Using the Sweep Tool .....	10.1
Objectives .....	10.2
Generative Shape Design Workbench Toolbars .....	10.2
Steps to Creating a Part Surface Using the Sweep Tool .....	10.2
1 Select the Generative Shape Design Workbench .....	10.3
2 Creating the Profile in the Sketcher Workbench .....	10.4
3 Creating the Guided Curve in the Sketcher Workbench .....	10.6
4 Joining the Guided Curve Entities Using the Join Tool .....	10.7
5 Creating a Surface Using the Sweep Tool .....	10.9
6 Creating the Trimmed Profile for the Top Flange .....	10.10
7 Extruding the “Flange Trim” Sketch Using the Extrude Tool .....	10.11

8 Splitting the Surfaces Using the Split Tool .....	10.13
9 Creating Surface Thickness Using the Offset Tool .....	10.15
10 Creating a Solid Using the Thick Surface Tool.....	10.16
11 Adding the 8 Degree Angle Using the Split Tool.....	10.17
12 Dressing Up the “Joggled Extrusion” Using the Fillet Tool.....	10.19
13 The Finishing Touch: Applying Material .....	10.20
14 Modifying the “Joggled Extrusion” Sketch .....	10.20
15 Save the “Joggled Extrusion” .....	10.21
16 Creating a Solid From a Closed Surface .....	10.21
Summary .....	10.23
Review Questions .....	10.25
Practice Exercises .....	10.26

<b>Lesson 11</b>	<b>DMU Navigator</b>
------------------	----------------------

Introduction .....	11.1
Objectives .....	11.2
DMU Navigator Workbench Toolbars .....	11.2
Steps to Navigating the Assembly Using the DMU Navigator Workbench .....	11.7
1 Downloading the Document from the Schroff Development Corporation Website .....	11.7
2 Unzip the SuperMileage.Zip File to Your Working Directory .....	11.7
3 Entering the DMU Navigator Workbench .....	11.8
4 Inserting Objects into the DMU Navigator Workbench .....	11.9
5 Navigating through the Assembly Using the Fly Mode .....	11.10
6 Creating an Annotated View .....	11.21
7 Creating 3D Text .....	11.22
8 Creating a Scene .....	11.22
9 Recording and Replaying a Fly Thru .....	11.25
Summary .....	11.26
Review Questions .....	11.27
Practice Exercises .....	11.29

<b>Lesson 12</b>	<b>Rendering Workbench</b>
------------------	----------------------------

Introduction .....	12.1
Objectives .....	12.2
Real Time Rendering Workbench Toolbars .....	12.2
Bringing the Assembly into the Rendering Workbench .....	12.5
1 Entering the Rendering Workbench .....	12.5
2 Loading the Documents into the Rendering Workbench .....	12.6
3 Creating an Environment .....	12.7
4 Defining a Light .....	12.10
5 Adding Images to the Walls .....	12.15
6 Create a Camera and a Shooting .....	12.17



7 Animating the Rendering .....	12.22
Summary .....	12.24
Review Questions .....	12.25
Practice Exercises .....	12.27

## Lesson 13

## Parametric Design

Introduction .....	13.1
Objectives .....	13.2
Toolbars Used in this Lesson .....	13.2
The Constraints Toolbar .....	13.3
The Knowledge Toolbar .....	13.4
Geometrical Constraints Symbols and Definitions .....	13.5
Dimensional Constraints and Definitions .....	13.7
1 Stop! Take Time to Analyze the Part .....	13.8
2 Develop a Plan of Attack .....	13.8
3 Execute the Plan .....	13.11
4 Create the Base Feature .....	13.11
5 Create the Secondary Feature .....	13.19
6 Creating the Dress Up Features .....	13.22
7 Putting the Plan to the Test .....	13.24
8 Additional Notes .....	13.25
Summary .....	13.25
Review Questions .....	13.26
Practice Exercises .....	13.28

## Terms And Definitions

Workbook/CATIA V5 Terms and Definitions .....	T.1
---	-----

## Index

Index to Key Terms .....	X.1
--------------------------	-----