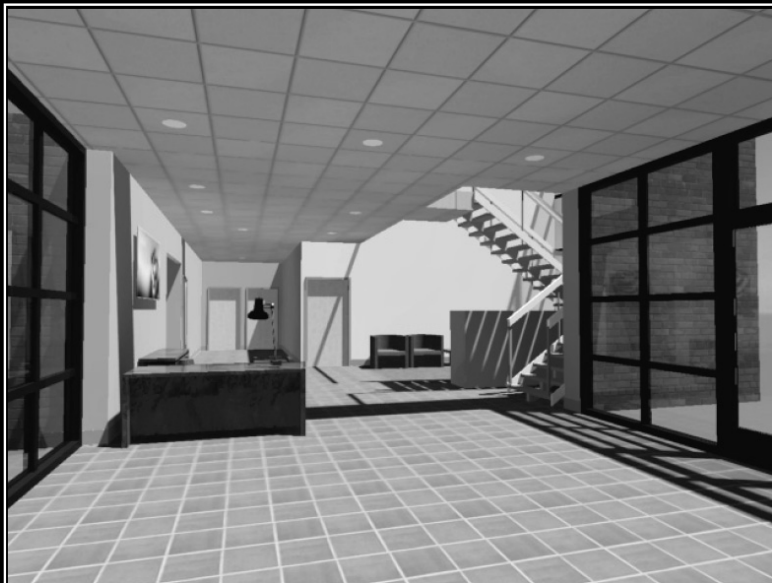


Autodesk 3ds Max Design 2010 FUNDAMENTALS



Daytime Lighting



Nighttime Lighting

SDC
PUBLICATIONS

Schroff Development Corporation
www.schroff.com

Better Textbooks. Lower Prices.

Contents

Preface.....	iv
Module 1: Introduction to Autodesk 3ds Max Design.....	1-1
Section 1: Overview.....	1-2
Overview.....	1-3
Visualization Workflow.....	1-7
Section 2: The Autodesk 3ds Max Design Interface.....	1-10
Menus and Toolbars.....	1-11
Status Bar.....	1-17
The Command Panel.....	1-18
Setting the Project Folder and Configuring User Paths.....	1-23
Viewport Configuration and Navigation.....	1-31
Object Selection Methods.....	1-44
Section 3: Basic Functions.....	1-48
Modeling with Primitives.....	1-49
Applying Transforms.....	1-51
Sub-Object Mode.....	1-62
Reference Coordinate Systems and Transform Centers.....	1-71
Cloning and Grouping.....	1-76
Poly Modeling with Graphite Tools.....	1-81
Statistics in Viewport.....	1-103
Self Check: Introduction to Autodesk 3ds Max Design.....	1-105
Module 2: Starting a Visualization Project.....	2-1
Section 1: Autodesk 3ds Max Design Configuration.....	2-3
Video Modes.....	2-4
Preferences.....	2-6
Configure Paths.....	2-7
Units Setup.....	2-11
Customizing the User Interface.....	2-14
Section 2: Assembling Project Files.....	2-17
Data Linking and Importing.....	2-18
DWG Link and Import Options.....	2-25
Importing Models from Revit.....	2-43
Layer and Object Properties.....	2-55
Section 3: 3D Modeling from 2D Objects.....	2-64
Drawing 2D Lines.....	2-65
The Lathe Modifier.....	2-72
2D Booleans.....	2-74
Terrain Objects.....	2-78

The Extrude Modifier	2-87
Boolean Operations	2-93
The Sweep Modifier (Optional)	2-104
Loft Objects (Optional)	2-109
Using Snaps for Precision	2-117
Self Check: Starting a Visualization Project	2-125

Module 3: Materials 3-1

Section 1: Introduction to Materials	3-3
How Materials Work	3-4
Understanding Maps and Materials	3-5
Materials and Material Libraries	3-8
Managing Materials	3-9
Section 2: Material Types and Parameters	3-24
Standard Materials	3-25
Architectural Materials (Optional)	3-44
Multi/Sub-Object Materials	3-47
Opacity, Bump, and Reflection Mapping	3-63
mental ray Shaders and Materials	3-72
Arch & Design Materials	3-83
ProMaterials	3-95
Other Material Types	3-98
Using the mental ray Multi/Sub-Map Shader	3-100
Creating a Decal Texture	3-111
Section 3: Mapping Coordinates and Scale	3-115
Mapping Coordinates	3-116
Mapping Scale	3-128
Spline Mapping	3-137
Self Check: Materials	3-140

Module 4: Introduction to 3ds Max Design Lighting 4-1

Section 1: Autodesk 3ds Max Design Lighting Overview	4-2
Local vs. Global Illumination	4-3
Choosing a Lighting Strategy	4-8
Section 2: Standard and Photometric Lighting	4-9
Fundamentals of Standard Lighting	4-10
Types of Standard Lights	4-11
Shadow Types	4-30
Photometric Light Objects	4-39
Exposure Control	4-62
Daytime Lighting	4-74
Soft Shadows and Ambient Occlusion	4-89
Self Check: Introduction to 3ds Max Design Lighting	4-91

Module 5: Lighting and Rendering using mental ray	5-1
Section 1: Scene Preparation for mental ray	5-2
Fundamentals of mental ray	5-3
Section 2: Rendering with mental ray	5-6
mental ray Interior Rendering	5-7
Controlling mental ray Quality	5-24
mental ray Proxies	5-42
Self Check: Lighting and Rendering using mental ray	5-47
Module 6: Rendering and Animation	6-1
Section 1: Rendering	6-2
Iterative Rendering	6-3
Single vs. Double-Sided Rendering	6-9
Camera Parameters	6-20
Background Images	6-25
The Print Size Wizard	6-40
Selected Rendering Options	6-43
Rendering Presets	6-53
Section 2: Animation	6-54
Animation Controls	6-55
Walkthrough Animation	6-71
Animation Output	6-79
Self Check: Rendering and Animation	6-86
Appendix	7-1
Getting Help with Autodesk 3ds Max Design	7-2
Object Substitution	7-4
Completing the Interior Scene	7-8
Camera Matching	7-10
Lighting Analysis	7-13
Creating a Shadow Study Animation	7-25
Creating Hierarchies	7-29
Animating Visibility	7-32
Creating an Assembly Animation	7-33
Index	8-1
Index	8-3