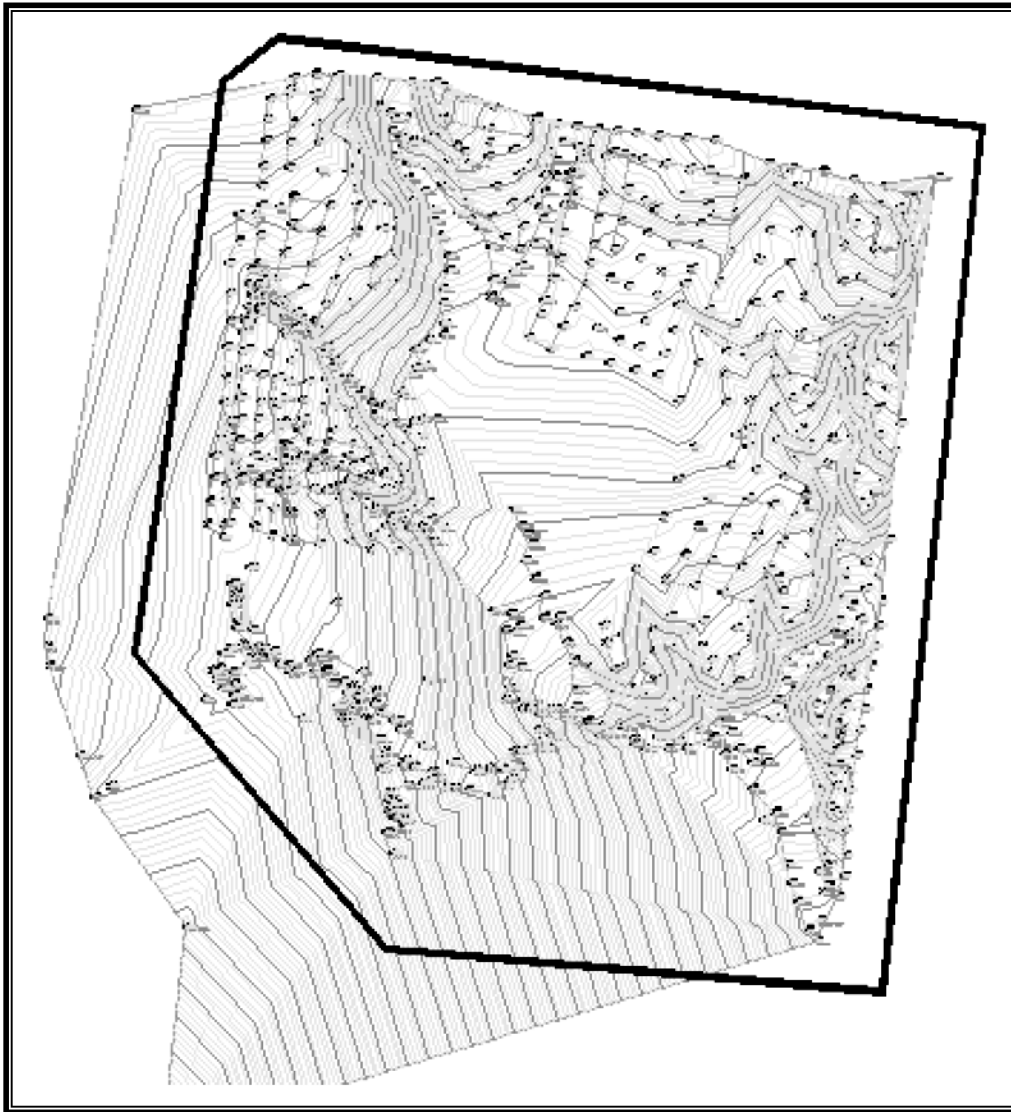


AutoCAD Civil 3D 2008

SURVEY



SDC
PUBLICATIONS

Schroff Development Corporation

www.schroff.com
www.schroff-europe.com

Contents

Module 1: Introduction to AutoCAD Civil 3D Survey	1-1
Section 1: Autodesk Field Book	1-2
What is a Field Book?	1-3
Field Book Language	1-5
Figure Commands	1-11
Section 2: Survey Tool Space	1-21
AutoCAD Civil 3D Survey Environment	1-22
Equipment Settings	1-26
Description Key Sets	1-28
Figure Styles	1-32
Section 3: Working with Field Books	1-34
Survey Database	1-35
Networks	1-38
Importing a Field Book	1-41
Reviewing Import Results	1-42
Reviewing Survey Data	1-47
Module 2: Survey and Traverse Adjustments.....	2-1
Section 1: Survey Least Squares	2-2
Least Squares	2-3
Creating a Least Squares Input file	2-8
Blunder Detection Analysis	2-12
Section 2: Traverses and Adjustments	2-14
Traverses Basics	2-15
Fixing Survey Errors	2-24
Defining a Traverse	2-27
Traverse Adjustment and Reports	2-30
Figure as Surface Breaklines	2-32
Section 3: Vault, Survey, and Traverse Adjustments	2-35
Vault and Survey	2-36
Closed Connected Traverse	2-38
Least Squares for Traverses	2-47