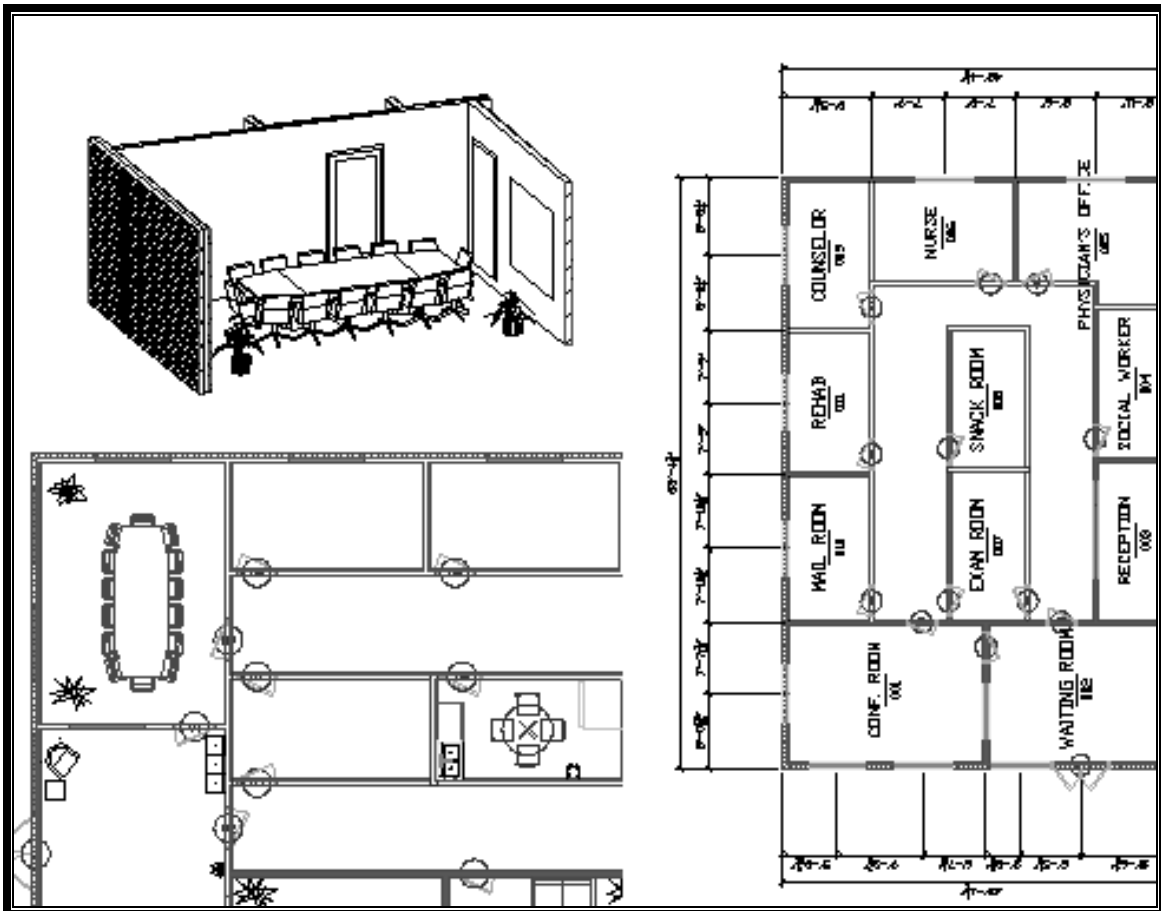


# Space Planning

## with AutoCAD Architecture 2008



**Elise Moss**

autodesk<sup>®</sup>  
authorized publisher

**SDC**  
PUBLICATIONS

Schroff Development Corporation

[www.schroff.com](http://www.schroff.com)  
[www.schroff-europe.com](http://www.schroff-europe.com)

# TABLE OF CONTENTS

<b>Preface</b>	i
<b>Acknowledgements</b>	ii
<b>Introduction</b>	I-1
<b>Lesson 1</b>	
<b>Planning Criteria</b>	
Exercise 1-1: Modifying the Space Tools Palette	1-3
Exercise 1-2: Editing Space Styles	1-5
Exercise 1-3: Copying Space Styles	1-13
Exercise 1-4: Adding Styles to the Palette	1-16
Exercise 1-5: Starting a New Project	1-18
Exercise 1-6: Adding Constructs	1-21
<b>Lesson 2</b>	
<b>Custom Tags</b>	
Exercise 2-1: Creating an A Schedule Tag	2-10
<b>Lesson 3</b>	
<b>Spaces</b>	
Exercise 3-1: Adding Spaces	3-2
Exercise 3-2: Adding a Space Tag tool	3-4
Exercise 3-3: Adding Space Tags	3-5
Exercise 3-4: Adding Room Tags	3-7
Exercise 3-5: Arrange Spaces	3-10
Exercise 3-6: Merging Spaces by Style	3-14
Exercise 3-7: Merging Manual Spaces	3-15
Exercise 3-8: Creating an Irregular Space	3-17
Exercise 3-9: Generating Spaces from a Floor Plan	3-18

## Lesson 4

### Zones

Exercise 4-1:	
Creating Zone Styles	4-2
Exercise 4-2:	
Creating Name Definitions	4-13
Exercise 4-3:	
Inserting Zones	4-15
Exercise 4-4:	
Attaching Spaces to a Zone	4-17
Exercise 4-5:	
Space Evaluation	4-19
Exercise 4-6:	
Create a Zone Schedule Style	4-22
Exercise 4-7:	
Zone Layouts	4-27
Exercise 4-8:	
Creating a Display Theme	4-28
Exercise 4-9:	
Adding a Display Theme Legend	4-31
Exercise 4-10:	
Adding a Display Theme to a Layout	4-32

## Lesson 5

### Walls, Doors, Windows, Openings

Exercise 5-1:	
Adding Wall Styles	5-1
Exercise 5-2:	
Adding Walls to Spaces	5-3
Exercise 5-3:	
Making Spaces Associative	5-7
Exercise 5-4:	
Layer Settings	5-10
Exercise 5-5:	
Door Styles	5-11
Exercise 5-6:	
Add Doors	5-13
Exercise 5-7:	
Modifying Doors	5-15
Exercise 5-8:	
Changing Door Appearance	5-16
Exercise 5-9:	
Add Window	5-19
Exercise 5-10:	
Add Openings	5-21

**Lesson 6****Floors, Ceilings and Finishes**

Exercise 6-1:	
Space Tool Review	6-1
Exercise 6-2:	
Adding Floor and Ceiling Slabs	6-3
Exercise 6-3:	
Adding Materials from the Content Browser	6-5
Exercise 6-4:	
Creating a Material	6-7
Exercise 6-5:	
Adding Materials to a Style	6-10
Exercise 6-6:	
Assigning Styles	6-16

**Lesson 7****Floor Plan Documentation**

Exercise 7-1:	
Creating a Floor Plan Drawing	7-1
Exercise 7-2:	
Adding a Call-Out	7-6
Exercise 7-3:	
AEC Dimension Styles	7-8
Exercise 7-4:	
AEC Dimension Wizard	7-12
Exercise 7-5:	
Adding AEC Dimensions	7-14
Exercise 7-6:	
Creating a Custom Titleblock	7-20
Exercise 7-7:	
Creating a Drawing Template	7-29

**Lesson 8****Reflected Ceiling Plans**

Exercise 8-1:	
Add Ceiling Grid	8-1
Exercise 8-2:	
Placing a Multi-View Block	8-5
Exercise 8-3:	
Modifying a Multi-View Block	8-7
Exercise 8-4:	
Creating a Reflected Ceiling Plan Drawing	8-9

## **Lesson 9**

### **Presentation Techniques**

Exercise 9-1:	
Creating a Furniture Tool Palette	9-1
Exercise 9-2:	
Creating an Interior Plan	9-6
Exercise 9-3:	
Furnishing the Building	9-10
Exercise 9-4:	
Creating a Live Section	9-18
Exercise 9-5:	
Creating 3D Elevations	9-21
Exercise 9-6:	
Creating Elevation Layouts	9-25

## **Lesson 10**

### **Materials & Rendering**

Exercise10-1:	
Creating a Material	10-1
Exercise 10-2:	
Assigning Materials	10-4
Exercise 10-3:	
Rendering	10-8
Exercise 10-4:	
Lighting	10-9

### **About the Author**