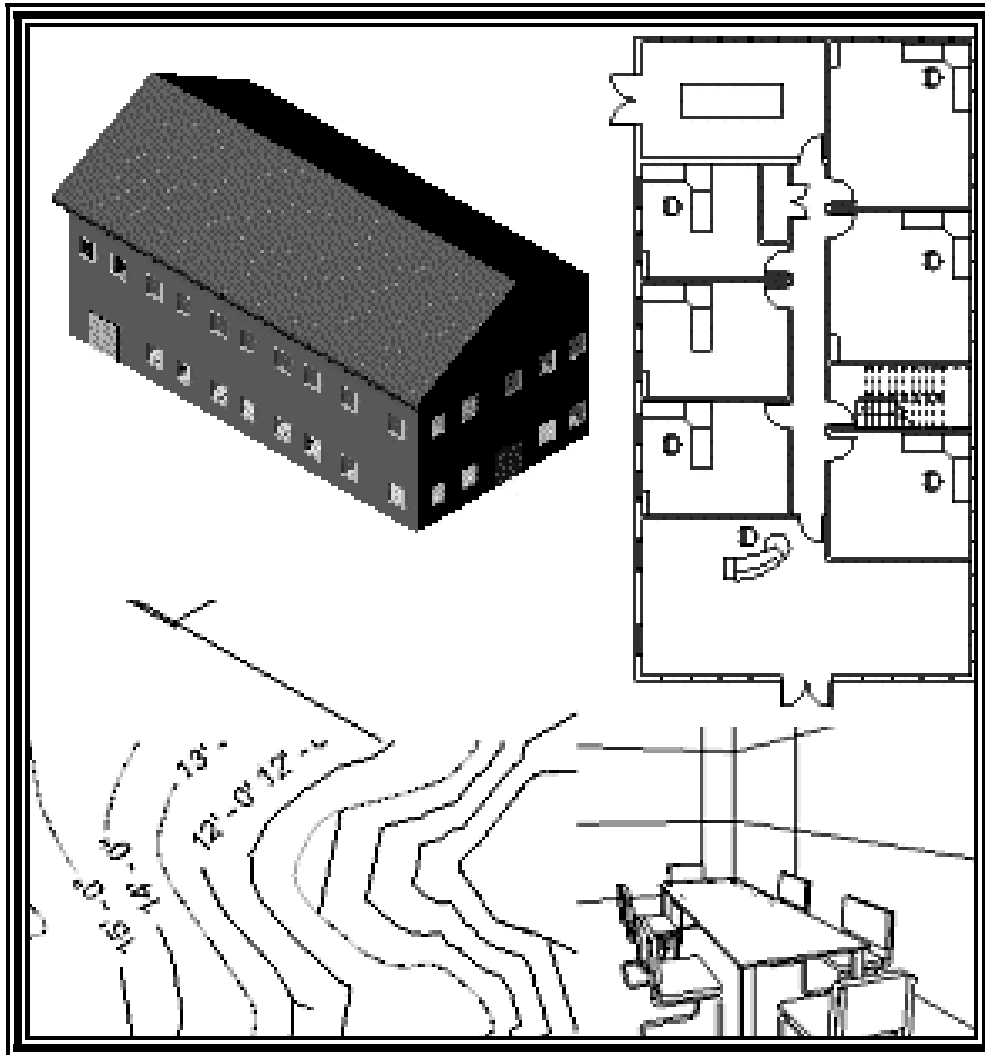




# Revit Architecture 2008 Basics:

# from the Ground Up



**Elise Moss**

**SDC**  
PUBLICATIONS

Schroff Development Corporation

---

[www.schroff.com](http://www.schroff.com)  
[www.schroff-europe.com](http://www.schroff-europe.com)

# TABLE OF CONTENTS

<b>Preface</b>	i
<b>Acknowledgements</b>	ii
<b>Table of Contents</b>	iii
<b>Lesson 1</b>	
<b>The Revit Interface</b>	
Exercise 1-1	
Using Worksets	1-3
Exercise 1-2	
Using Resize	1-12
Exercise 1-3	
Working with Groups	1-15
Exercise 1-4	
Using Demolish	1-20
Exercise 1-5	
Using Align and Move	1-21
<b>Quiz 1</b>	Q 1-1
<b>Lesson 2</b>	
<b>Site Plans</b>	
Exercise 2-1	
Creating a Toposurface using Pick Points	2-1
Exercise 2-2	
Setting Phases	2-8
Exercise 2-3	
Creating a Toposurface Using AutoCAD Data	2-9
Exercise 2-4	
Placing Contour Labels	2-12
Exercise 2-5	
Placing Property Lines Using Bearing and Distance	2-15
Exercise 2-6	
Placing Property Lines Using Sketch	2-18
Exercise 2-7	
Tag Property Lines	2-20
Exercise 2-8	
Creating Subregions	2-22
Exercise 2-9	
Creating a Topo Schedule	2-29
Exercise 2-10	
Grading a Surface	2-32
Exercise 2-11	
Creating a Building Pad	2-35

Exercise 2-12	
Adding Components	2-38
Exercise 2-13	
Adding Landscaping	2-47
Exercise 2-14	
Creating a Parking Space Tags	2-50
Exercise 2-15	
Creating a Parking Space Schedule	2-53
Exercise 2-16	
Creating Your Site Layout	2-53
Additional Exercises	2-55
<b>Quiz 2</b>	<b>Q 2-1</b>
<b>Lesson 3</b>	
<b>Mass Elements</b>	
Exercise 3-1	
Adding a Level	3-2
Exercise 3-2	
Adding Mass Elements	3-4
Exercise 3-3	
Modifying Mass Elements	3-7
Exercise 3-4	
Creating Wall By Face	3-11
Exercise 3-5	
Adding Doors and Windows	3-13
Additional Projects	P 3-1
<b>Quiz 3</b>	<b>Q 3-1</b>
<b>Lesson 4</b>	
<b>Floor Plans</b>	
Exercise 4-1	
Placing a Grid	4-2
Exercise 4-2	
Placing Walls	4-6
Exercise 4-3	
Wall Properties	4-11
Exercise 4-4	
Add Level 1 Interior Walls	4-19
Exercise 4-5	
Ad Level 2 Interior Walls	4-20
Exercise 4-6	
Add Doors	4-24
Exercise 4-7	
Adding Stairs	4-27
Exercise 4-8	
Modifying Walls	4-35

---

Exercise 4-9	
Adding an Elevator	4-41
Exercise 4-10	
Lavatory Layouts	4-47
Exercise 4-11	
Modifying an Existing Family	4-51
Exercise 4-12	
Completing the Lavatory Layout	4-53
Exercise 4-13	
Copying Lavatory Layouts	4-57
Exercise 4-14	
Adding Windows	4-61
Exercise 4-15	
Adding a Curtain Wall	4-69
Exercise 4-16	
Floor Plan Layout	4-74
Exercise 4-17	
Creating Shared Parameters	4-78
Exercise 4-18	
Adding Shared Parameters to Families	4-84
Exercise 4-19	
Creating a Custom Door Schedule	4-89
Exercise 4-20	
Creating a Custom Window Schedule	4-95
Exercise 4-21	
Adding Schedules and Symbols	4-99
Exercise 4-22	
Find and Replace Families	4-104
Additional Projects	P 4-1
<b>Quiz 4</b>	Q 4-1
<b>Lesson 5</b>	
<b>Roof Plans</b>	
Exercise 5-1	
Creating a Roof Using Footprint	5-2
Exercise 5-2	
Modifying a Roof	5-6
Exercise 5-3	
Creating a Roof By Face	5-9
Exercise 5-4	
Adding Skylights	5-12
Exercise 5-5	
Creating a Gable	5-14
Exercise 5-5	
Creating a Roof Plan	5-22
<b>Quiz 5</b>	Q 5-1

**Lesson 6**

**Creating Floors and Reflected Ceiling Plans**

Exercise 6-1	
Creating Floors	6-1
Exercise 6-2	
Creating Ceilings	6-8
Exercise 6-3	
Creating Reflected Ceiling Plans	6-16
Exercise 6-4	
Adding Ceiling Tags	6-20
Exercise 6-5	
Adding Light Fixtures	6-21
Exercise 6-6	
Creating Text Styles	6-23
Exercise 6-7	
Adding General Notes	6-25
Additional Projects	P 6-1

**Quiz 6** Q 6-1

**Lesson 7**

**Elevations**

Exercise 7-1	
Creating Elevation Documents	7-1
Exercise 7-2	
Using Line Work	7-4
Exercise 7-3	
Creating Sections	7-5
Exercise 7-4	
Adding Material Indications	7-7
Exercise 7-5	
Adding Window Tags	7-9
Exercise 7-6	
Creating Section Views	7-10
Additional Projects	P 7-1

**Quiz 7** Q 7-1

**Lesson 8**

**Rendering**

Exercise 8-1	
Adding Scenery	8-1
Exercise 8-2	
Defining Camera Views	8-6
Exercise 8-3	
Assigning Settings	8-9
Exercise 8-4	
Interior Scenes	8-15

---

Exercise 8-5	
Placing a Rendering on a Sheet	8-25
Exercise 8-6	
Placing a Path for a Walkthrough	8-27
Exercise 8-7	
Playing the Walkthrough	8-29
Exercise 8-8	
Editing the Walkthrough Path	8-30
Exercise 8-9	
Creating an Animation	8-32
Additional Projects	P 8-1
<b>Quiz 8</b>	Q 8-1
<b>Lesson 9</b>	
<b>Customizing Revit</b>	
Exercise 9-1	
Creating an Annotation Symbol	9-1
Exercise 9-2	
Creating a Titleblock	9-6
Exercise 9-3	
Creating a Line Style	9-23
Exercise 9-4	
Defining Keyboard Shortcuts	9-25
Exercise 9-5	
Defining Dimension Styles	9-27
Exercise 9-6	
Creating a Window Family	9-30
Exercise 9-7	
Testing a Custom Window Family	9-49
<b>Revit Hot Keys</b>	
<b>About the Author</b>	