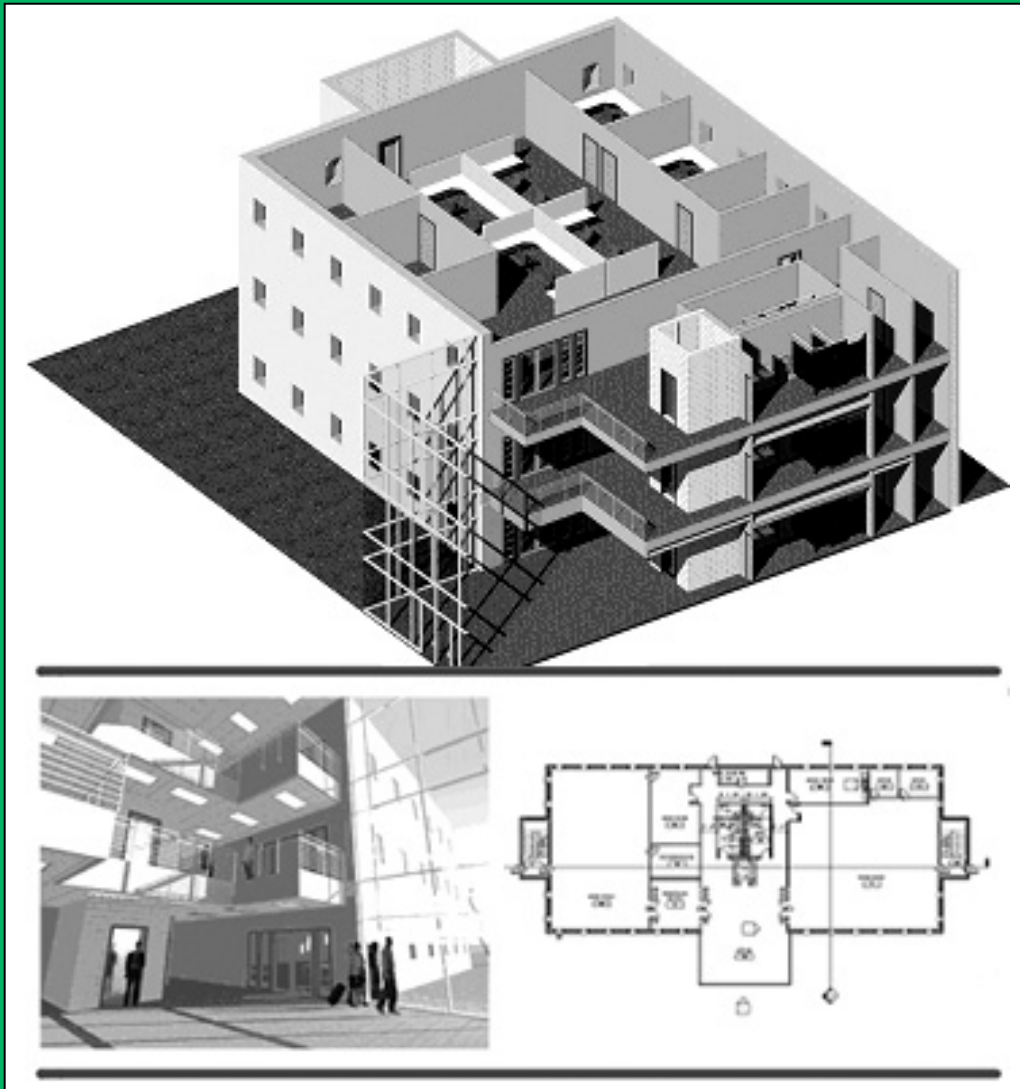


Commercial Design

Using

Revit® Architecture 2008



Daniel John Stine

SDC
PUBLICATIONS

Schroff Development Corporation

www.schroff.com
www.schroff-europe.com

Table of Contents

1.	GETTING STARTED WITH REVIT ARCHITECTURE 2008	
1-1	What is Revit Architecture 2008?	1-1
1-2	Overview of the Revit user interface	1-3
1-3	Open, Save & Close an existing Project	1-8
1-4	Creating a new Project	1-13
1-5	Using Pan & Zoom to view your drawings	1-15
	<i>Self-Exam & Review Questions</i>	
2.	Quick Start: Small Office	
2-1	Walls, Grids and Dimensions	2-1
2-2	Doors	2-18
2-3	Windows	2-25
2-4	Roof	2-28
2-5	Annotation, Room Tags & Schedules	2-33
2-6	Printing	2-38
	<i>Self-Exam & Review Questions</i>	
3.	Office Building: FLOOR PLAN (First Floor)	
3-1	Project overview	3-1
3-2	Exterior walls	3-3
3-3	Interior walls	3-11
3-4	Elevator	3-19
3-5	Doors and Windows	3-25
	<i>Self-Exam & Review Questions</i>	
4.	Office Building: FLOOR PLANS (Second & Third Floors)	
4-1	Copy common walls from first floor	4-1
4-2	Additional interior walls	4-7
4-3	Setting the floor-to-floor height	4-10
4-4	Stairs	4-11
	<i>Self-Exam & Review Questions</i>	
5.	Office Building: ROOF	
5-1	Hip roof	5-1
5-2	Skylights	5-11
5-3	Roof Design options (Style, pitch & overhang)	5-15
	<i>Self-Exam & Review Questions</i>	
6.	Office Building: FLOOR SYSTEMS & REFLECTED CEILING PLANS	
6-1	Floor systems	6-1
6-2	Ceiling systems (Susp. ACT & Gypsum Board)	6-10
6-3	Placing Fixtures (Lights & diffusers)	6-19
6-4	Annotations	6-23
	<i>Self-Exam & Review Questions</i>	
7.	Office Building: INTERIOR & EXTERIOR ELEVATIONS	
7-1	Creating & viewing parametric exterior elevations	7-1
7-2	Modifying the Project model: exterior elevations	7-7
7-3	Creating & viewing parametric interior elevations	7-11
7-4	Modifying the Project model: interior elevations	7-15
7-5	Adding mullions to a curtainwall	7-17
7-6	Design Options	7-23
	<i>Self-Exam & Review Questions</i>	

8. Office Building: SECTIONS	
8-1 Specify section cutting plane in plan view	8-1
8-2 Modifying the Project model in section view	8-6
8-3 Wall Sections	8-8
8-4 Annotations	8-12
<i>Self-Exam & Review Questions</i>	
9. Office Building: FLOOR PLAN FEATURES	
9-1 Toilet room layouts	9-1
9-2 Cabinets	9-8
9-3 Furniture	9-13
9-4 Adding Guardrails	9-18
<i>Self-Exam & Review Questions</i>	
10. Office Building: ESTIMATE and SCHEDULES	
10-1 Room & Door tags	10-1
10-2 Generate a Door Schedule	10-5
10-3 Generate Room Finish Schedule	10-10
<i>Self-Exam & Review Questions</i>	
11. Office Building: PHOTO-REALISTIC RENDERINGS	
11-1 Creating an exterior rendering	11-1
11-2 Rendering an isometric in section	11-12
11-3 Creating an interior rendering	11-17
11-4 Adding people to the rendering	11-26
<i>Self-Exam & Review Questions</i>	
12. Office Building: CONSTRUCTION DOCUMENTS SET	
12-1 Setting up a sheet	12-1
12-2 Sheet Index	12-12
12-3 Printing a set of drawings	12-16
<i>Self-Exam & Review Questions</i>	

INDEX

Design Option Set

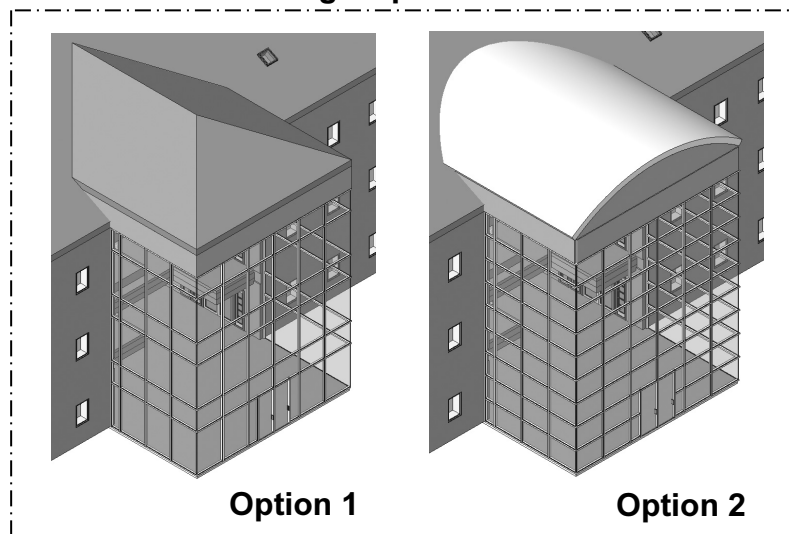


Image from pg. 7-24

This image shows the two design options that are developed in Lesson 7.

Also developed in this book are the:

- ◆ Floor Plans
- ◆ Elevations
- ◆ Sections
- ◆ Curtainwall Design
- ◆ Renderings
- ◆ Doors & Windows
- ◆ Text & Dimensions
- ◆ Schedules