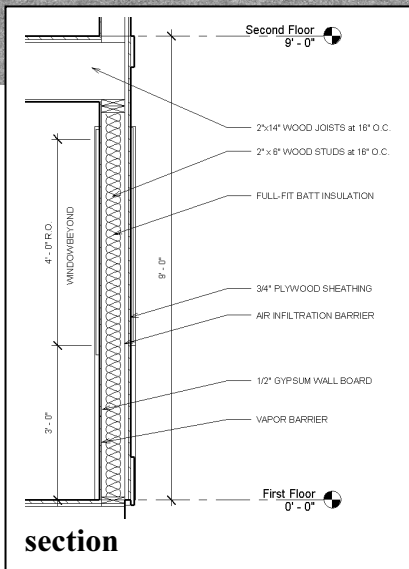


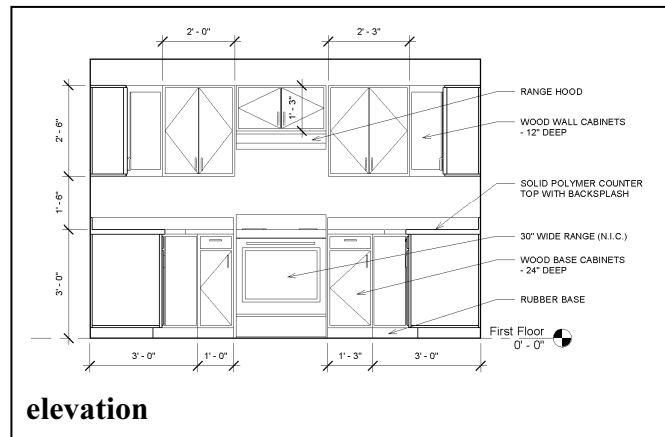
# Residential Design Using Revit® Architecture 2008



rendering



section



elevation

Daniel John Stine

**SDC**  
PUBLICATIONS

Schroff Development Corporation

[www.schroff.com](http://www.schroff.com)  
[www.schroff-europe.com](http://www.schroff-europe.com)

## Table of Contents

---

<b>1.</b>	<b>Getting Started with Revit Architecture 2008</b>	<b>Page</b>
1-1	What is Revit Architecture 2008?	1-1
1-2	Overview of the Revit User Interface	1-3
1-3	Open, Save and Close an Existing Project	1-8
1-4	Creating a New Project	1-13
1-5	Using Pan and Zoom to View Your Drawings	1-15
	<i>Self-Exam and Review Questions</i>	
<b>2.</b>	<b>Lake Cabin: FLOOR PLAN (The Basics)</b>	
2-1	Walls	2-1
2-2	Doors	2-5
2-3	Windows	2-7
2-4	Roof	2-9
2-5	Annotation and Dimensions	2-11
2-6	Printing	2-15
	<i>Self-Exam and Review Questions</i>	
<b>3.</b>	<b>Overview of Linework and Modify Tools</b>	
3-1	Lines and Shapes	3-1
3-2	Snaps	3-16
3-3	Edit Tools	3-22
3-4	Annotations	3-35
	<i>Self-Exam and Review Questions</i>	
<b>4.</b>	<b>Drawing 2D Architectural Objects</b>	
4-1	Sketching Rectilinear Objects	4-1
4-2	Sketching Objects with Curves	4-11
	<i>Self-Exam and Review Questions</i>	
<b>5.</b>	<b>Residence: FLOOR PLAN (First Floor)</b>	
5-1	Project Setup	5-1
5-2	Exterior Walls	5-7
5-3	Interior Walls	5-23
5-4	Doors Openings and Windows	5-35
5-5	Adding a Fireplace	5-54
	<i>Self-Exam and Review Questions</i>	
<b>6.</b>	<b>Residence: FLOOR PLANS (Second Floor and Basement Plans)</b>	
6-1	View Setup and Enclosing the Shell	6-1
6-2	Adding the Interior Walls	6-6
6-3	Adding Doors, Openings and Windows	6-10
6-4	Basement Floor Plan	6-15
6-5	Stairs	6-22
6-6	Dimensions	6-35
	<i>Self-Exam and Review Questions</i>	
<b>7.</b>	<b>Residence: ROOF</b>	
7-1	Roof Design Options	7-1
7-2	Gable Roof	7-11
7-3	Low Roof Elements	7-19
7-4	Skylights	7-30
	<i>Self-Exam and Review Questions</i>	
<b>8.</b>	<b>Residence: FLOOR SYSTEMS AND REFLECTED CEILING PLANS</b>	
8-1	Floor Systems	8-1
8-2	Ceiling Systems (Susp. ACT and Gypsum Board)	8-16
8-3	Placing Light Fixtures	8-31
8-4	Annotations	8-36
	<i>Self-Exam and Review Questions</i>	

	<b>Page</b>
<b>9. Residence: ELEVATIONS</b>	
9-1 Creating and Viewing Parametric Exterior Elevations	9-1
9-2 Modifying the Project Model: Exterior Elevations	9-9
9-3 Creating and Viewing Parametric Interior Elevations	9-16
9-4 Modifying the Project Model: Interior Elevations	9-22
9-5 Design Options	9-25
<i>Self-Exam and Review Questions</i>	
<b>10. Residence: SECTIONS</b>	
10-1 Specify Section Cutting Plane in Plan View	10-1
10-2 Modifying the Project Model in Section View	10-7
10-3 Wall Sections	10-15
10-4 Annotations and Detail Components	10-25
<i>Self-Exam and Review Questions</i>	
<b>11. Residence: FLOOR PLAN FEATURES</b>	
11-1 Bathroom Layouts	11-1
11-2 Kitchen Layout	11-7
11-3 Furniture	11-20
11-4 Adding Guardrails	11-25
<i>Self-Exam and Review Questions</i>	
<b>12. Residence: SCHEDULES</b>	
12-1 Room and Door Tags	12-1
12-2 Generate a Door Schedule	12-6
12-3 Generate a Room Finish Schedule	12-10
<i>Self-Exam and Review Questions</i>	
<b>13. Residence: PHOTO-REALISTIC RENDERING</b>	
13-1 Creating an Exterior Rendering	13-1
13-2 Rendering an Isometric in Section	13-13
13-3 Creating an Interior Rendering	13-20
13-4 Adding People to the Rendering	13-27
<i>Self-Exam and Review Questions</i>	
<b>14. Residence: CONSTRUCTION DOCUMENTS SET</b>	
14-1 Setting Up a Sheet	14-1
14-2 Sheet Index	14-10
14-3 Printing a Set of Drawings	14-17
<i>Self-Exam and Review Questions</i>	

**Partial view of  
project created  
in this book**

