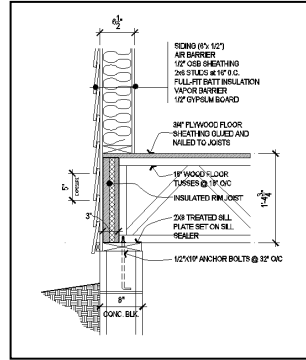
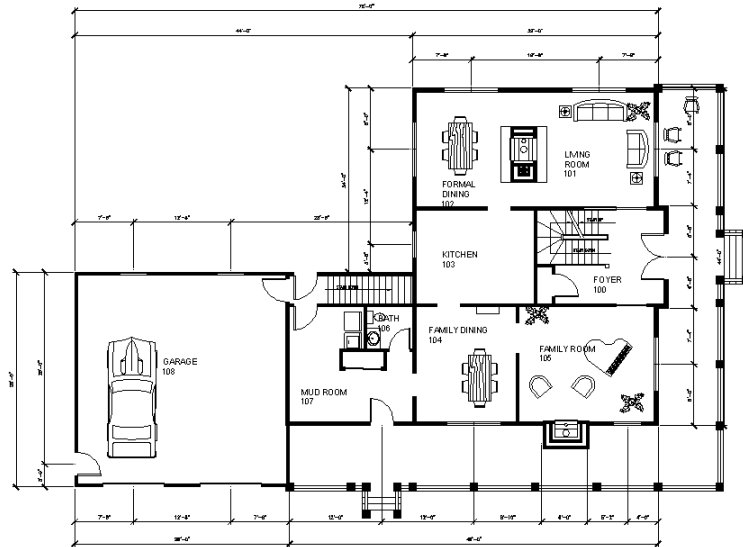


Residential Design

using

AutoCAD® 2008



Daniel John Stine

SDC
PUBLICATIONS

Schroff Development Corporation

www.schroff.com
www.schroff-europe.com

Table of Contents

	Page
1. Getting Started with AutoCAD 2008	
1-1 What is AutoCAD 2008?	1-1
1-2 Overview of the AutoCAD 2008 User Interface	1-3
1-3 Open, Save & Close an Existing Drawing	1-8
1-4 Creating a New Drawing	1-11
1-5 Using Pan & Zoom to View Your Drawings	1-13
1-6 Using the AutoCAD Help System	1-19
<i>Self-Exam & Review Questions</i>	1-24
2. Crash Course Introduction (The Basics)	
2-1 Lines and Shapes	2-1
2-2 Object Snaps	2-16
2-3 Modify Tools	2-21
2-4 Annotation	2-34
2-5 Printing	2-38
<i>Self-Exam & Review Questions</i>	2-42
3. Drawing Architectural Objects (Draw & Modify)	
3-1 Rectilinear Objects	3-1
3-2 Objects with Curves	3-9
3-3 Using Layers	3-30
<i>Self-Exam & Review Questions</i>	3-42
4. Residential Project: FLOOR PLANS	
4-1 Walls	4-1
4-2 Doors	4-21
4-3 Windows	4-36
4-4 Annotation and Dimensions	4-42
<i>Self-Exam & Review Questions</i>	4-53
<u>Additional Tasks</u>	
Task 4-1 Fireplace (north)	4-54
Task 4-2 Main Stairway	4-56
Task 4-3 Secondary Stairway	4-57
Task 4-4 Porch	4-58
Task 4-5 Garage Steps	4-59
Task 4-6 Fireplace (south)	4-59
5. Residential Project: EXTERIOR ELEVATIONS	
5-1 Elevation outlines	5-1
5-2 Windows	5-18
5-3 Doors	5-29
5-4 Chimney, Railing and Siding	5-37
<i>Self-Exam & Review Questions</i>	5-52
<u>Additional Tasks</u>	
Task 5-1 Grade Line	5-53
Task 5-2 Draw the other Chimney	5-55
Task 5-3 Print content from a web site	5-56
Task 5-4 Adding Foundation lines	5-56
6. Residential Project: SECTIONS	
6-1 Building Sections	6-1
6-2 Typical Wall Section	6-5
6-3 Adding Annotation to the Wall Section	6-9
6-4 Stair Section	6-13
<i>Self-Exam & Review Questions</i>	6-23
<u>Additional Tasks</u>	
Task 6-1 Additional Building Sections	6-24
Task 6-2 Wall Section at Garage	6-24
Task 6-3 Hatch Wall Sections	6-24
Task 6-4 Stair Detail	6-25

7. Residential Project: PLAN LAYOUT & INTERIOR ELEVATIONS	
7-1 Bathroom Layout	7-1
7-2 Bathroom Elevation	7-8
7-3 Adding Furnishings to your Floor Plans	7-21
7-4 Using Tool Palettes	7-27
<i>Self-Exam & Review Questions</i>	7-38
<u>Additional Tasks</u>	
Task 7-1 Toilet Room Plan Layouts	7-39
Task 7-2 Toilet Room Elevations	7-39
Task 7-3 Furniture Layout	7-39
8. Residential Project: SITE PLAN	
8-1 Draw existing survey	8-1
8-2 Add House, Driveway and Walks	8-9
8-3 Layout New Contours	8-13
<i>Self-Exam & Review Questions</i>	8-20
<u>Additional Tasks</u>	
Task 8-1 Add items to the Site Plan	8-21
Task 8-2 Draw another grade profile	8-21
Task 8-3 Update grade profile for each exterior elev.	8-21
9. Residential Project: SCHEDULES & SET UP SHEET	
9-1 Room Finish Schedule	9-1
9-2 Sheet Setup & Management (Sheet Sets)	9-18
9-3 Sheet Index	9-45
<i>Self-Exam & Review Questions</i>	9-53
<u>Additional Tasks</u>	
Task 9-1 Create Door Schedule	9-54
Task 9-2 Place all your views on sheets	9-54
Task 9-3 Place callout bubbles on your sheets	9-54
Task 9-4 Add additional raster images to your drawing	9-54
10. Residential Project: LINEWEIGHTS & PLOTTING	
10-1 Lineweights	10-1
10-2 Plotting: Digital Set	10-12
10-3 Plotting: Hardcopy Set	10-25
<i>Self-Exam & Review Questions</i>	10-35
<u>Additional Tasks</u>	
Task 10-1 Apply lineweights to all your drawings	10-36
Task 10-2 Plot all your drawings full size	10-36
Task 10-3 Email a DWF file	10-36
Appendix A: Helpful information	
A1-1 A Help Sheet from an Instructor	A1-1

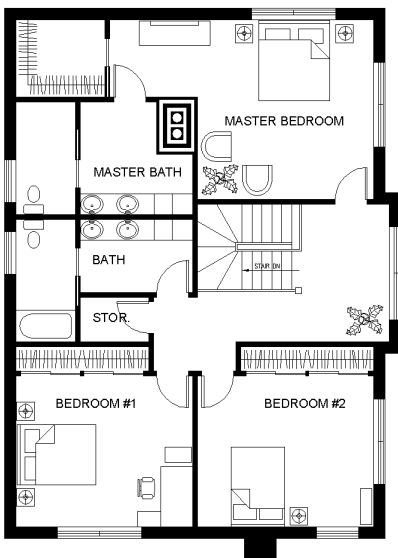


Image from Lesson 7, page 35

This is a floor plan that the reader will draw in this book; including:

- ◆ Walls
- ◆ Doors
- ◆ Windows
- ◆ Hatching walls
- ◆ plumbing fixtures
- ◆ Furniture
- ◆ Stairs
- ◆ Windows
- ◆ Doors
- ◆ Text & Dimensions