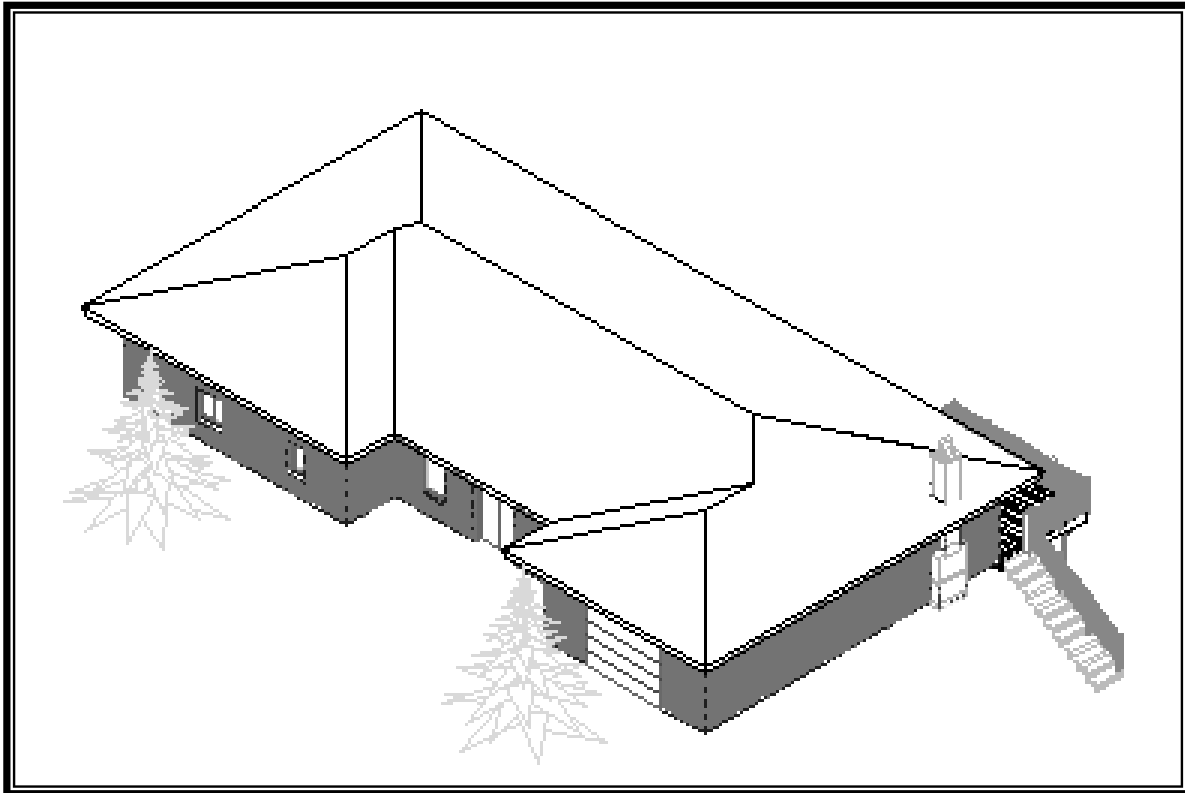


Autodesk  
**Architectural Desktop 2006**  
**Fundamentals**



**Elise Moss**

Autodesk  
Authorized Publisher

**SDC**  
PUBLICATIONS

Schroff Development Corporation

---

[www.schroff.com](http://www.schroff.com)  
[www.schroff-europe.com](http://www.schroff-europe.com)

# TABLE OF CONTENTS

## Preface

## Acknowledgements

## Lesson 1

### Desktop Features

Exercise 1-1:	Setting the Template for QNEW	1-5
Exercise 1-2:	Creating a New Drawing with an AEC Template	1-7
Exercise 1-3:	Opening an Existing Project	1-20
Exercise 1-4:	Creating a New Project	1-27
Exercise 1-5:	Setting Up a Project Tool Palette	1-30
Exercise 1-6:	Creating a New Geometric Profile	1-39
Exercise 1-7:	Creating a New Wall Style	1-42
Exercise 1-8:	Creating a Tool	1-52
Exercise 1-9:	Copying a Style to a Template	1-55
Exercise 1-10:	Downloading Styles from Autodesk's Website	1-59
Exercise 1-11:	Creating a Fireplace Chimney	1-60
Exercise 1-12:	Exploring the Display Manager	1-78
Exercise 1-13:	Creating a Display Configuration	1-81

## Lesson 2

### Site Plans

Exercise 2-1:	Installing the Express Tools	2-2
Exercise 2-2:	Accessing AutoCAD Tools and Menus	2-4
Exercise 2-3:	Creating Custom Line Types	2-5
Exercise 2-4:	Creating a Custom Text Style	2-7
Exercise 2-5:	Creating New Layers	2-9

Exercise 2-6: Creating a Site Plan	2-12
Exercise 2-7: Creating a Layer User Group	2-23

**Quiz 1** Q1-1

**Lesson 3**

**Floor Plans**

Exercise 3-1: Creating Exterior Walls	3-2
Exercise 3-2: Convert to Walls	3-4
Exercise 3-3: Wall Cleanup	3-8
Exercise 3-4: Adding Closet Doors	3-14
Exercise 3-5: Adding Interior Doors	3-17
Exercise 3-6: Add Opening	3-18
Exercise 3-7: Adding Doors	3-23
Exercise 3-8: Add Window Assemblies	3-27
Exercise 3-9: Adding a Fireplace	3-33

**Quiz 2** Q2-1

**Lesson 4**

**Space Planning**

Exercise 4-1: Creating AEC Content	4-1
Exercise 4-2: Equipping the Bathrooms	4-5
Exercise 4-3: Changing the Icons on a Tool Palette	4-9
Exercise 4-4: Furnishing the Common Areas	4-9
Exercise 4-5: Adding to the Service Areas	4-17
Exercise 4-6: Creating Layer Settings	4-20

**Lesson 5****Roofs**

Exercise 5-1: Creating a Roof using Existing Walls	5-4
Exercise 5-2: Roof Slabs	5-5
Exercise 5-3: Creating a Roof Cricket	5-7
<b>Quiz 3</b>	Q3-1

**Lesson 6****Structural Members**

Exercise 6-1: Creating Member Styles	6-4
Exercise 6-2: Adding Structural Members	6-8
Exercise 6-3: Add Floorboards	6-16
Exercise 6-4: Add Railing	6-19
Exercise 6-5: Add Stairs	6-24

**Lesson 7****Layouts**

Exercise 7-1: Creating a Custom Toolbar	7-2
Exercise 7-2: Creating an Elevation Label	7-4
Exercise 7-3: Creating an Elevation Window Tag	7-11
Exercise 7-4: Creating a Custom Titleblock	7-19
Exercise 7-5: Creating a Drawing Template	7-30
Exercise 7-6: Creating a Keynote Database	7-36
Exercise 7-7: Adding a Keynote Database to a Project	7-41
Exercise 7-8: Creating a Floor Plan View	7-44
Exercise 7-9: Creating Elevation Views	7-49
Exercise 7-10: Changing Hatch Patterns in an Elevation View	7-55

Exercise 7-11: Using the Sheet Set Manager	7-58
Exercise 7-12: Creating an Elevation Sheet	7-62
Exercise 7-13: Adding Keynotes to a Sheet	7-66
Exercise 7-14: Adding Elevation Labels to a Sheet	7-71
<b>Quiz 4</b>	<b>Q4-1</b>
<b>Lesson 8:</b>	
<b>Dimensioning</b>	
Exercise 8-1: Dimensioning a Floor Plan	8-10
<b>Lesson 9:</b>	
<b>Schedules</b>	
Exercise 9-1: Creating a Schedule Palette	9-9
Exercise 9-2: Creating a Schedule Table	9-12
Exercise 9-3: Adding Window Tags	9-15
Exercise 9-4: Adding Door Tags	9-17
Exercise 9-5: Adding a Schedule Table	9-18
Exercise 9-6: Exporting a Schedule	9-23
<b>Lesson 10</b>	
<b>Creating a Video</b>	
Exercise 10-1: Adding a Path	10-1
Exercise 10-2: Adding a Camera Tool to a Palette	10-3
Exercise 10-3: Creating a Video	10-9
<b>Comprehensive Exam</b>	<b>FE-1</b>
<b>Index</b>	
<b>About the Author</b>	