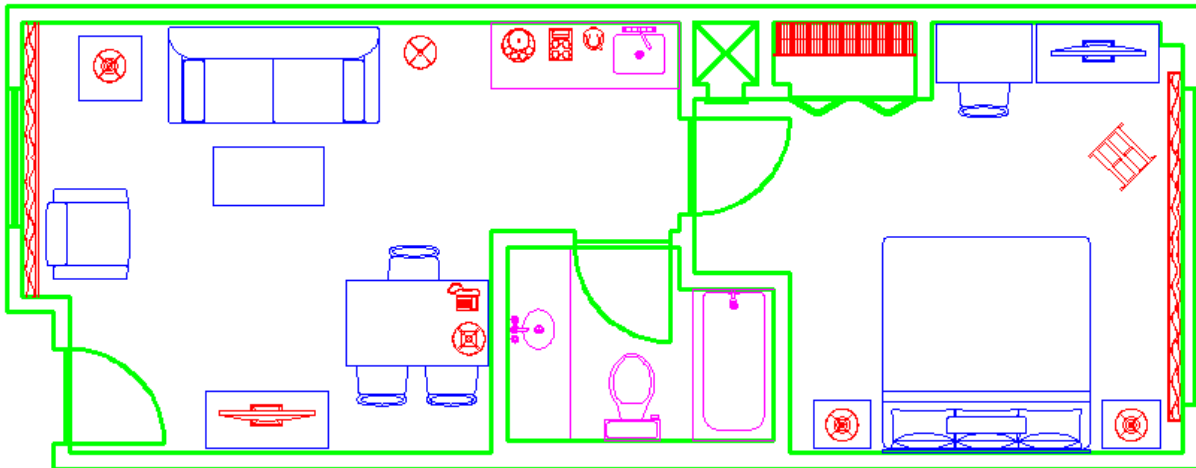


With layer “Structure” turned off, it is easier to select the other objects to change their layer.

44. Repeat the process described in steps 41 & 42 to change the layer for the furniture, fixtures, and miscellaneous items.

You can turn layers on and off as desired to help facilitate selecting the objects.

When you are done, your drawing will look like this:



45. Pick the Plan View tab and switch to Paper Space

46. Use a Selection Window or a Crossing Window to select the drawing format with the titleblock. The grips will appear. Use the pull-down arrow on the Layers toolbar and pick layer Format. This changes all the selected objects to layer Format. Use the Escape key to eliminate the grips.

47. Pick the viewport border. Use the pull-down arrow on the Layers toolbar and pick layer Viewport. This changes the viewport border to layer Viewport. Use the Escape key to eliminate the grips.

Congratulations! Save your drawing – we will continue to build on this in the next tutorial.