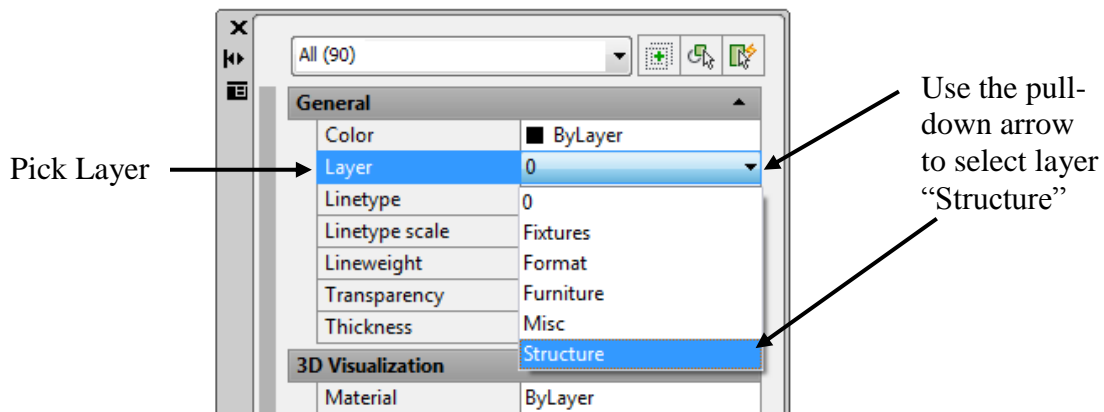


It is not necessary to select all the objects at once – you can repeat the process until all objects that belong on this layer have been changed. You can pick anywhere in the drawing space and press the Esc key to eliminate the selection set. This is helpful if you do not pick all the items at once.

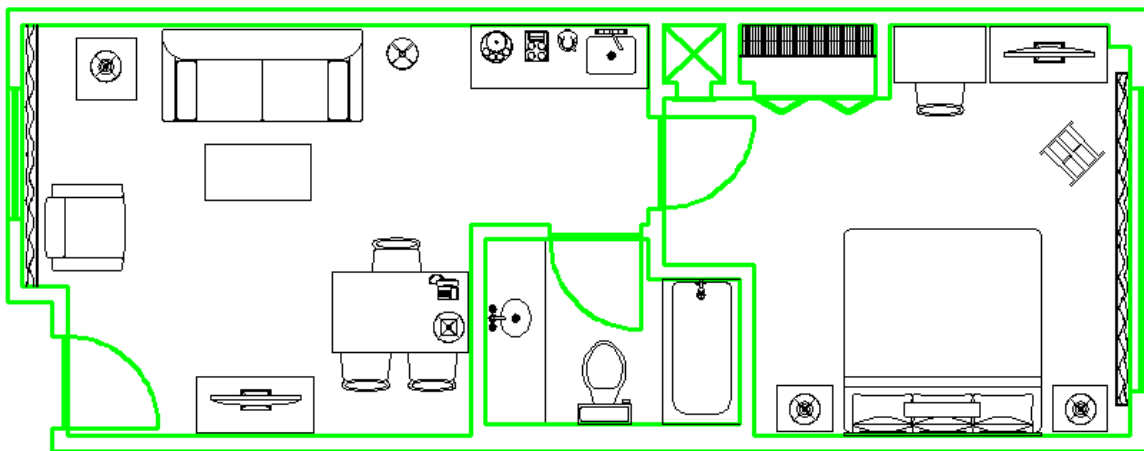
After you begin to select the objects do the following:

*(Pick Layer and use the pull-down arrow to select layer “Structure”)*

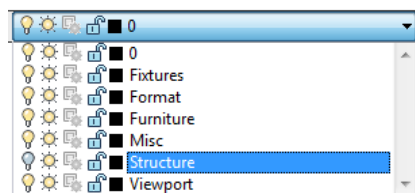


**42. Close the Properties Palette and press the Esc key.**

When you are done, your drawing will look like this:



**43. Use the pull-down arrow in the Layers toolbar to turn layer “Structure” off.**



After turning the light bulb off, pick anywhere in the drawing space to close out this pull-down.